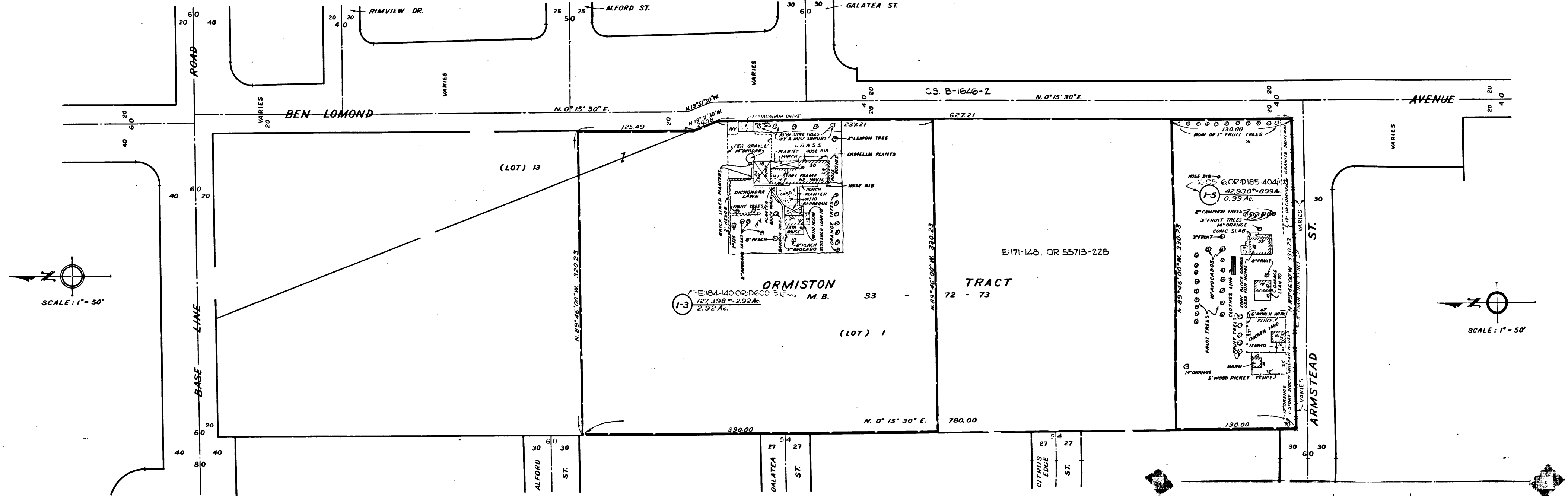


Superior Court Case No. 687731  
 Suit for Condemnation  
 Filed Oct. 2, 1957  
 County of Los Angeles, Plaintiff  
 VS  
 Oliver L. Corbin, et al, Defendants  
 SEE INDIVIDUAL PARCELS FOR  
 FINAL JUDGMENTS AND DEEDS



For boundary survey see C.S. B-2681

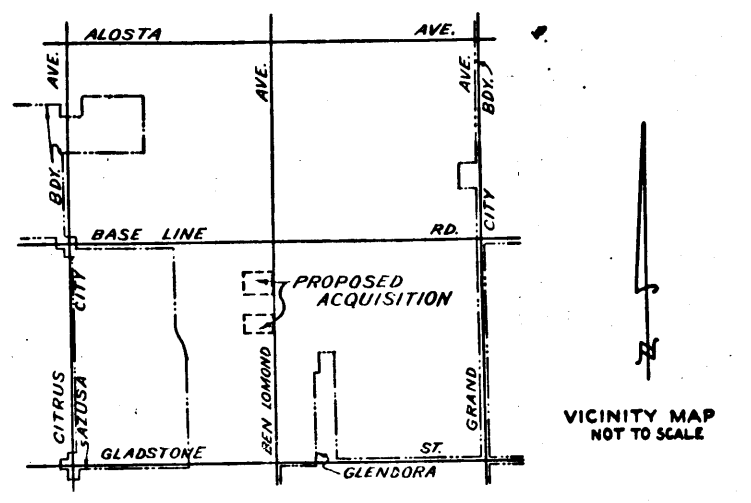


EXHIBIT "A"  
 MAP SHOWING PROPERTY SOUGHT TO BE ACQUIRED  
 FOR  
 PUBLIC PURPOSES  
 JOHN A. LAMBIE, COUNTY ENGINEER. JULY, 1957  
 LEGEND  
 NUMBERS IN CIRCLES REPRESENT PARCELS SOUGHT TO BE ACQUIRED.  
 PARCELS FOR PROPOSED PUBLIC PURPOSES OUTLINED IN RED.

AREAS SHOWN THUS: 0000 = AREA OF PARCEL IN SQUARE FEET  
 00000 = AREA OF HOLDING IN SQUARE FEET OR ACRES

DRAWN BY	DATE	CHECKED BY	DATE	CALCULATED BY	DATE	CHECKED BY	DATE
ANDERSEN	7-57	RUSH	7-57	ANDERSEN	2-57	RUSH	3-57

ALIGNMENT: M.B. 33-72-73  
 TOPOGRAPHY: AS OF 3-57  
 INDEX MAP: 47 (D-3)  
 ASSESSOR BOOK: 1834

REVISIONS:  
 JOB NO. 0054.00

GLADSTONE COMMUNITY PARK ①  
 ONE SHEET see C.S. B-2681

C.F. 2482 -

I.M. No 47