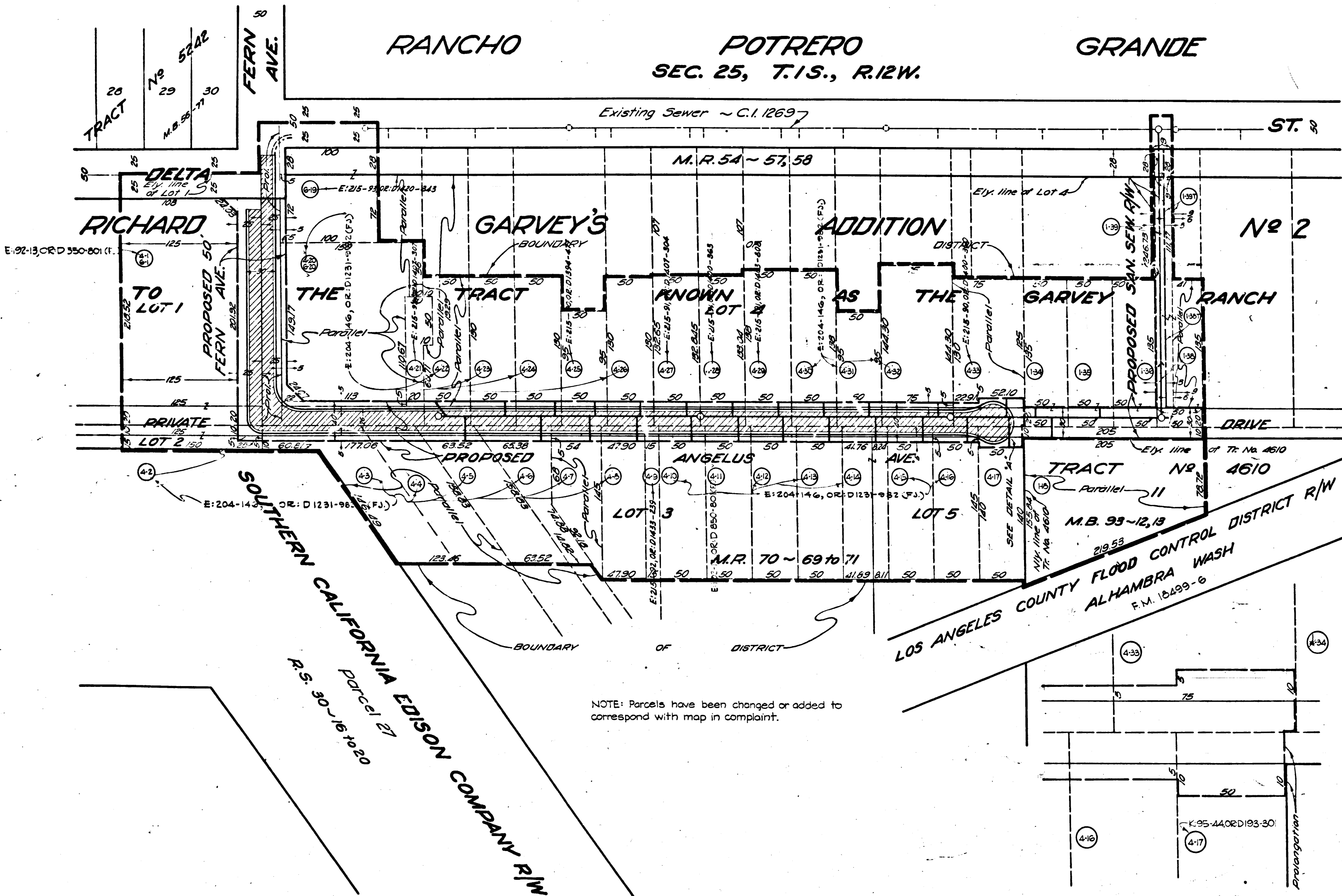


Superior Court Case No 682079
 Suit for Condemnation
 Filed June 26, 1957
 County of Los Angeles, Plff.
 VS
 Peter Viavattene, et al, Defts.
 SEE INDIVIDUAL PARCELS FOR
 FINAL JUDGMENTS AND DEEDS



NOTE: Parcels have been changed or added to correspond with map in complaint.



COUNTY IMPROVEMENT NO. 1785M
 (ANGELUS AVENUE)

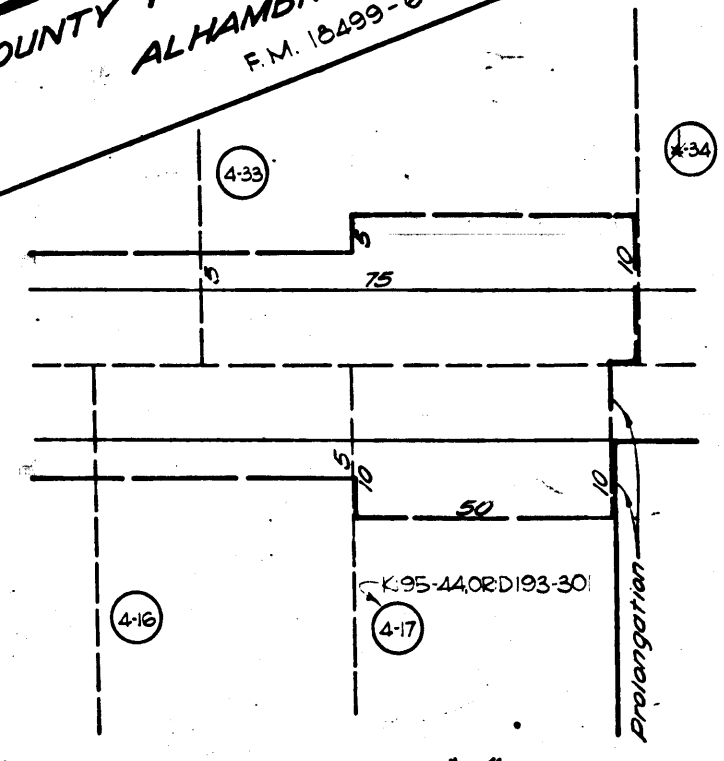
DIAGRAM SHOWING THE RIGHTS OF WAY TO BE ACQUIRED, THE PROPOSED SEWER AND ROAD IMPROVEMENTS, THE EXTERIOR BOUNDARIES OF THE DISTRICT TO BE BENEFITED BY SAID ACQUISITION AND IMPROVEMENTS AND ASSESSED TO PAY THE COST AND EXPENSES THEREOF.

COUNTY OF LOS ANGELES, CALIFORNIA
 JOHN A. LAMBIE COUNTY ENGINEER

SUBMITTED *W.H. Kelle* DIVISION ENGINEER APPROVED *F.L. Doan* CHIEF DEPUTY COUNTY ENGINEER

LEGEND

PARCEL NUMBER	(Symbol)
CURB	(Symbol)
GUTTER	(Symbol)
PAVEMENT	(Symbol)
SEWER	(Symbol)
HOUSE LATERALS	(Symbol)
Y BRANCHES	(Symbol)
MANHOLE	(Symbol)
ROAD EASEMENT TO BE ACQUIRED	(Symbol)
SEWER RIGHT OF WAY TO BE ACQUIRED	(Symbol)
TEMPORARY CONSTRUCTION EASEMENT	(Symbol)



C.F. 2483 -

CHECKED BY VALUE

CHECKED	ROBERTSON	DECEMBER, 1956
DRAWN	BSCHWIND	APRIL, 1955
INDEX 36-171	A.M.B. 826-1	SO. SAN GABRIEL