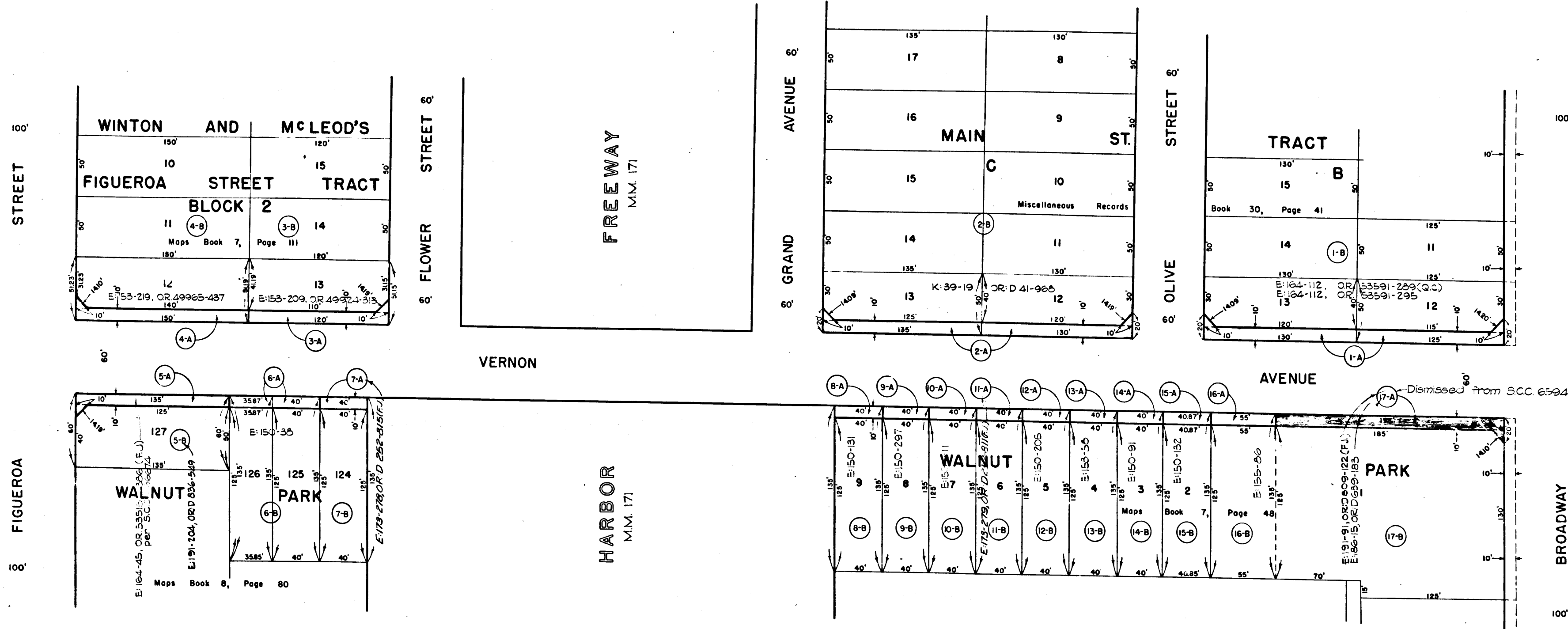
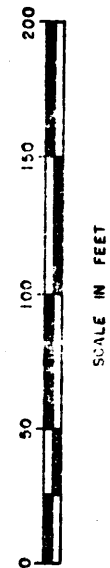


Superior Court Case No 659456
 Suit for Condemnation
 Filed April 25, 1956
 City of Los Angeles, Plaintiff
 VS
 Calpen Investment Corp, et al, Defts
 SEE INDIVIDUAL PARCELS FOR
 FINAL JUDGMENTS AND DEEDS



C.F. 2486 -

MAP
 SHOWING REAL PROPERTIES
 OVER WHICH EASEMENTS AND RIGHTS REQUIRED
 FOR PUBLIC STREET PURPOSES
 ARE TO BE CONDEMNED FOR
 THE WIDENING OF VERNON AVENUE
 BETWEEN
 BROADWAY
 AND
 FIGUEROA STREET
 IN THE CITY OF LOS ANGELES, CALIFORNIA
 IN ACCORDANCE WITH ORDINANCE NO. 106561
 LYALL A. PARDEE CITY ENGINEER JANUARY 1956



- NOTES:
1. Property to be condemned for public street purposes shown outlined in red.
 2. Property to which it is proposed to extend damages, if any, shown outlined in yellow.
 3. Figures and letters in circles indicate parcels as set forth in the caption.

THIS VERNON AVE. BROADWAY TO FIGUEROA ST.
 Order No. 81589 Right of Way No. 21546
 Dist. Map 7739, 4017, Div. Index 171, 172
 Cert's File 2885, 3737 Council Dist. 7-B. Engr. Dist. CENTRAL
 Plans & Profiles P. 159-10 Field Book
 Office Work Case No. 484, 484A. Supervised by J. R. [Signature]
 Submitted JANUARY 1956 Division Eng.
 Approved JANUARY 1956 City Eng. [Signature]
 I. M. 24

Superior Court Case No 726623
 Suit for Condemnation
 Filed July 14, 1959
 City of Los Angeles, Plaintiff
 VS
 All Drug Co., et al, Defendants
 SEE INDIVIDUAL PARCELS FOR
 FINAL JUDGMENTS AND DEEDS