

MARGINAL MAP  
SCALE: 1" = 60'

E:188-126, OR: D 754-653 (FJ)  
E:174-195 (FJ) → (100) 3805' 3433'

Superior Court Case No. 728892  
Suit for Condemnation  
Filed Aug. 18, 1959  
County of Los Angeles, Plaintiff  
VS  
City of Los Angeles, et al, Defts.  
SEE INDIVIDUAL PARCELS FOR  
FINAL JUDGMENTS AND DEEDS

Superior Court Case No. SMC-5262  
Suit for Condemnation  
Filed Oct. 24, 1956  
County of Los Angeles, Plaintiff  
VS  
Margaret M. Ainsworth, et al, Defts.  
SEE INDIVIDUAL PARCELS FOR  
FINAL JUDGMENTS AND DEEDS

4-30-34 TRACT  
PRADERA M. S. 16-38  
20169

SCALE: 1" = 300'  
C.F. 2488 -

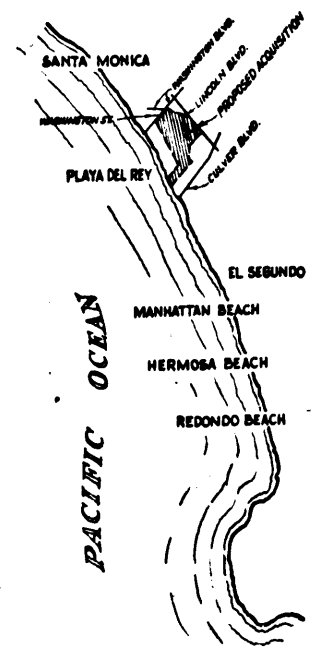


EXHIBIT "A"  
MAP SHOWING PROPERTY SOUGHT TO BE ACQUIRED  
FOR  
PUBLIC PURPOSES

JOHN A. LAMBIE, COUNTY ENGINEER SEPTEMBER, 1956

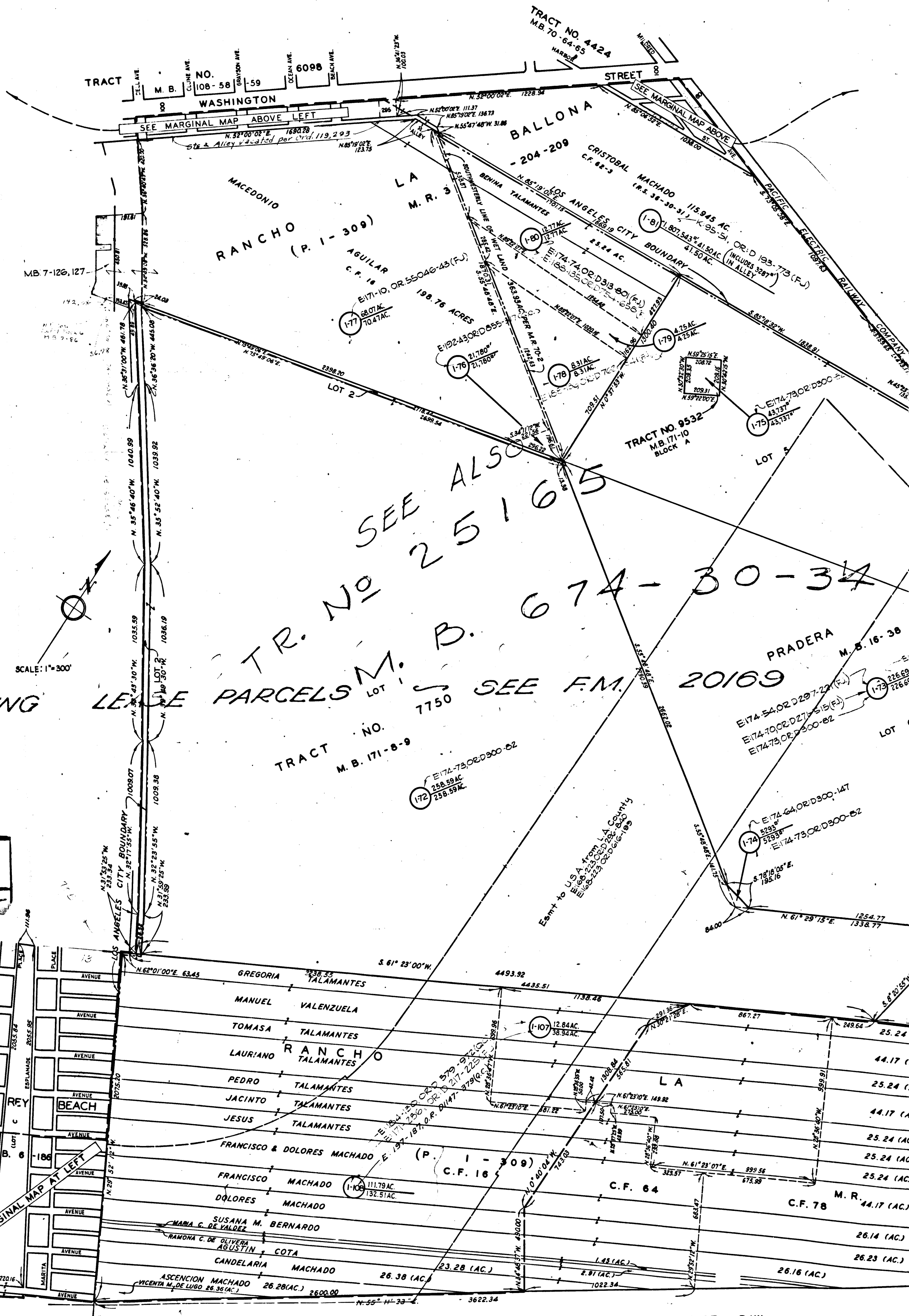
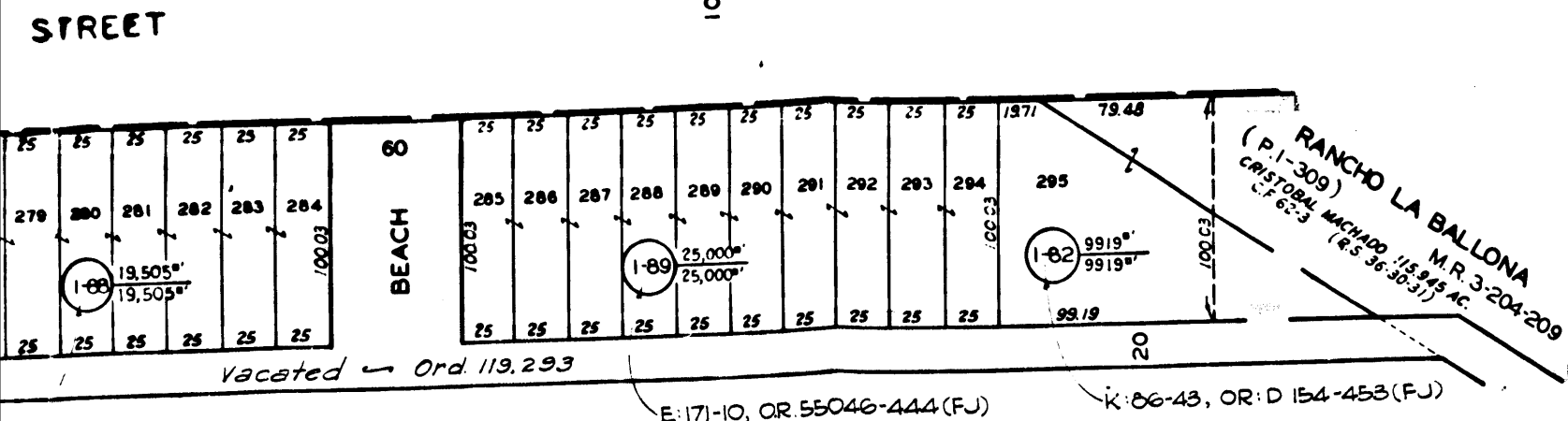
LEGEND  
NUMBERS IN CIRCLES REPRESENT PARCELS SOUGHT TO BE ACQUIRED.  
PORTION OUTLINED IN RED DENOTES PROPERTY SOUGHT TO BE ACQUIRED  
FOR PUBLIC PURPOSES.

AREAS SHOWN THUS: 0000 = AREA OF PARCEL IN SQUARE FEET OR ACRES  
00000 = AREA OF HOLDING IN SQUARE FEET OR ACRES

DRAWN BY	DATE	CHECKED BY	DATE	CALCULATED BY	DATE	CHECKED BY	DATE
FARMER-WIMMER	8-56	D. ANDERSON	9-56	RT, KA, DA, ASE	8-56	RT, KA, DA, ASE & RJ	9-56

ALIGNMENT: M.B. 171-8-9  
TOPOGRAPHY: NOT SHOWN  
INDEX MAP: 23(A, B-3, 4)  
ASSESSOR BOOK: 101, 571, 572, 4574  
JOB NO. 0021.16

MARINA DEL REY ①  
ONE SHEET



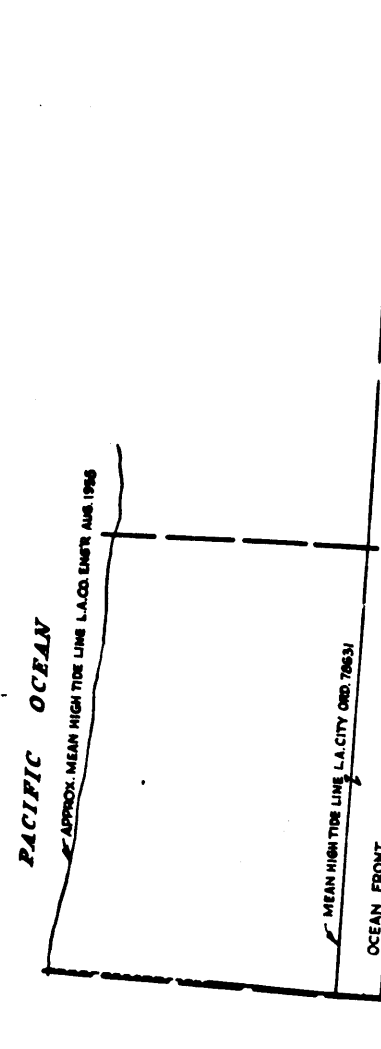
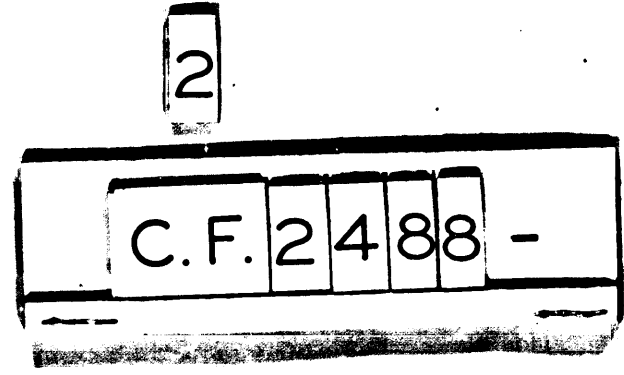
FOR MAP SHOWING

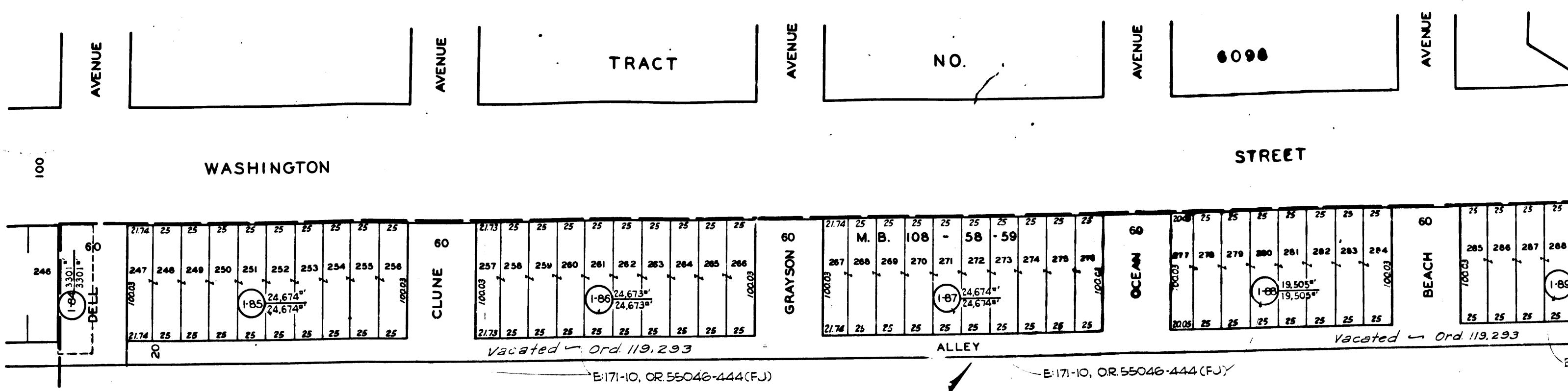
LEASE PARCELS

SEE ALSO  
T.R. NO. 25165

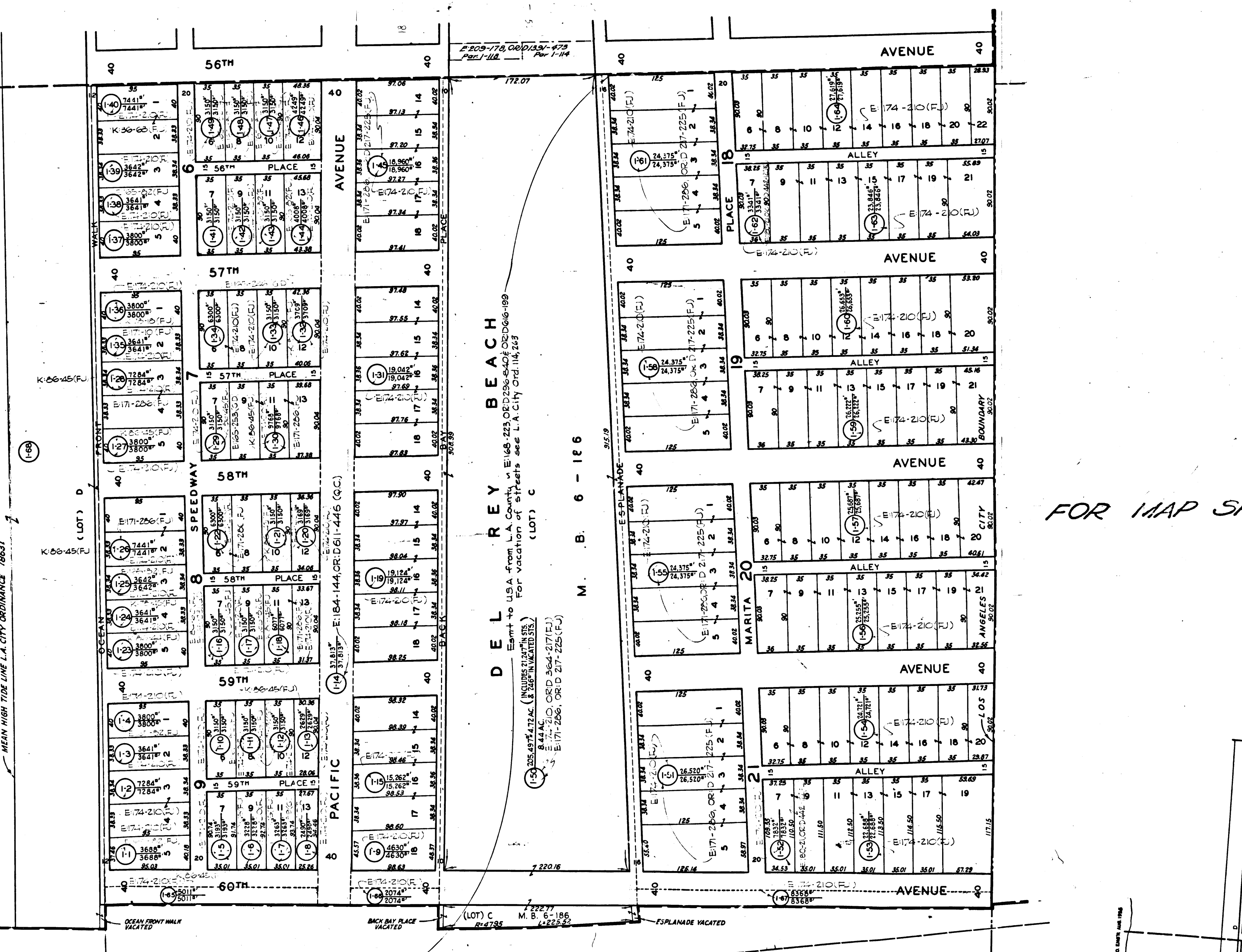
674-30-34

SEE F.M. 20169





MARGINAL MAP  
SCALE: 1" = 60'



MARGINAL MAP  
SCALE: 1" = 60'

C.F. 2488 -