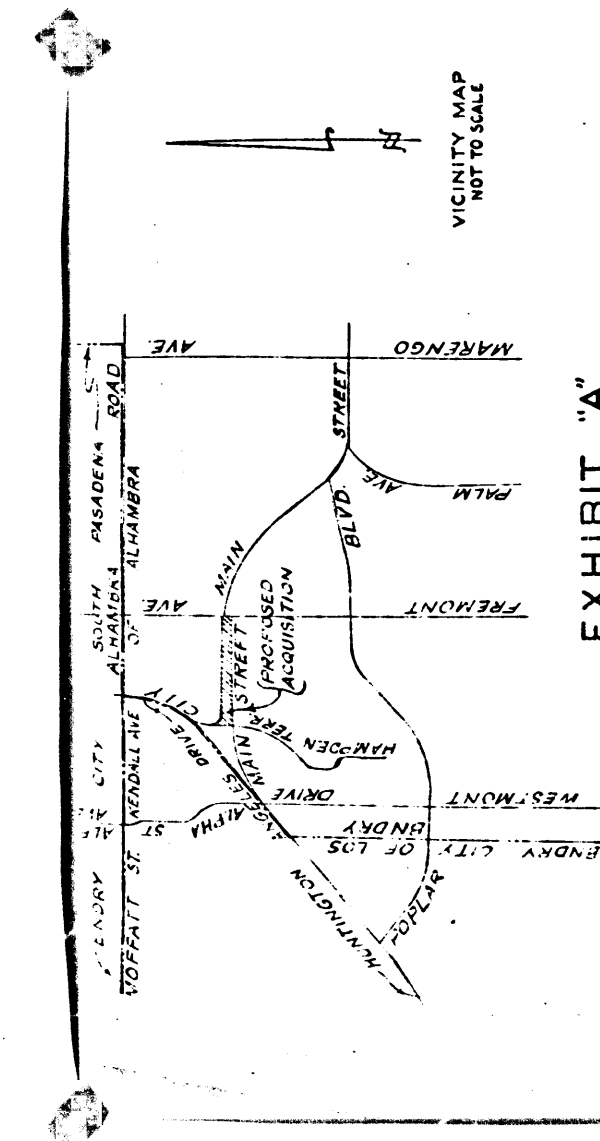


Superior Court Case No. 702350
 Suit for Condemnation
 Filed June 5, 1958
 County of Los Angeles, Plaintiff
 VS
 Peggy Emery Engle, et al, Defts.
 SEE INDIVIDUAL PARCELS FOR
 FINAL JUDGMENTS AND DEEDS



VICINITY MAP
 NOT TO SCALE

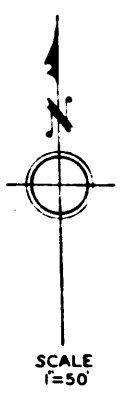
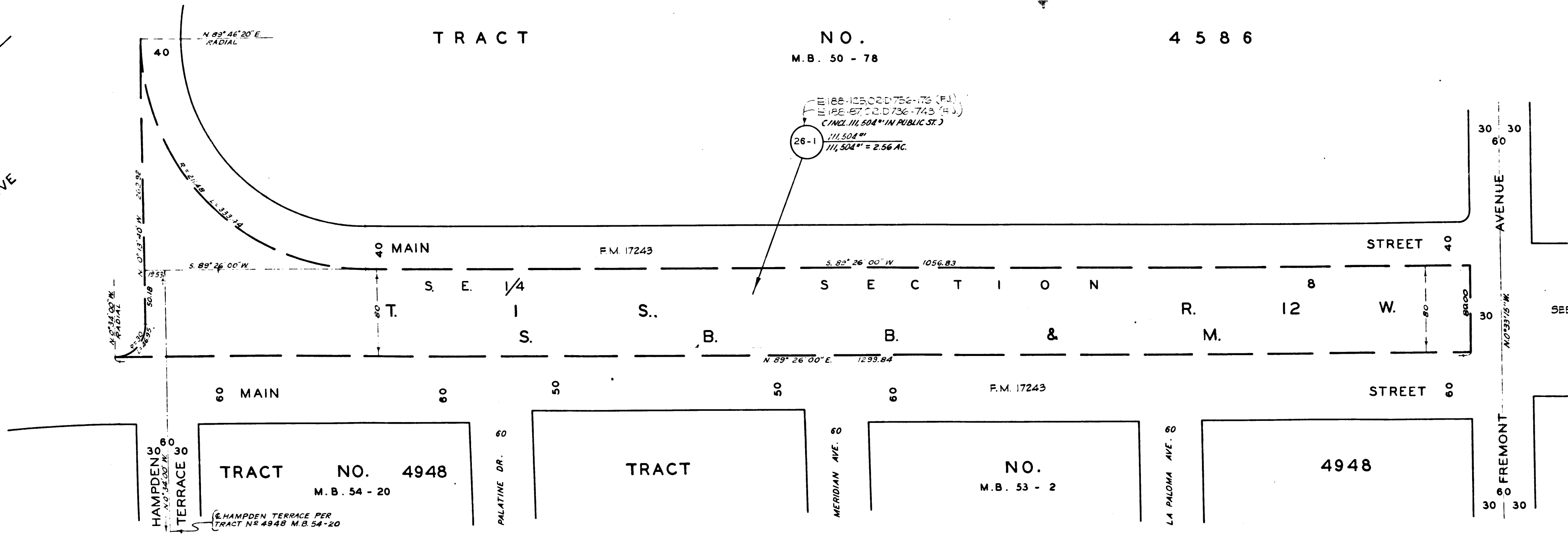
EXHIBIT "A"

MAP SHOWING PROPERTY SOUGHT TO BE ACQUIRED
 FOR THE WIDENING OF
MAIN STREET

JOHN A. LAMBIE, COUNTY ENGINEER, MARCH, 1958
 LEGEND
 NUMBERS IN CIRCLES REPRESENT PARCELS SOUGHT TO BE ACQUIRED.
 PARCELS FOR PROPOSED HIGHWAY SHOWN IN RED.

AREAS SHOWN THUS:		AREA OF PARCEL IN SQUARE FEET		AREA OF HOLDING IN SQUARE FEET OR ACRES			
DRAWN BY	DATE	CHECKED BY	DATE	CALCULATED BY	DATE	CHECKED BY	DATE
T. WOOD	11-57	BENNETT	3-58	T. WOOD	11-57	BENNETT	3-58
ALIGNMENT, TR. NO. 4948, M.B. 54-20 REVISIONS:							
1. ORIGINAL MAP DRAWN BY JOHN A. LAMBIE, COUNTY ENGINEER, MARCH, 1958							
2. REVISIONS MADE BY JOHN A. LAMBIE, COUNTY ENGINEER, MARCH, 1958							
ASSESSOR BOOK, 300							
JOB NO. 092391							
MAIN STREET							
ONE SHEET							

HUNTINGTON DRIVE
 C.F. 2425



C.F. 2498 -