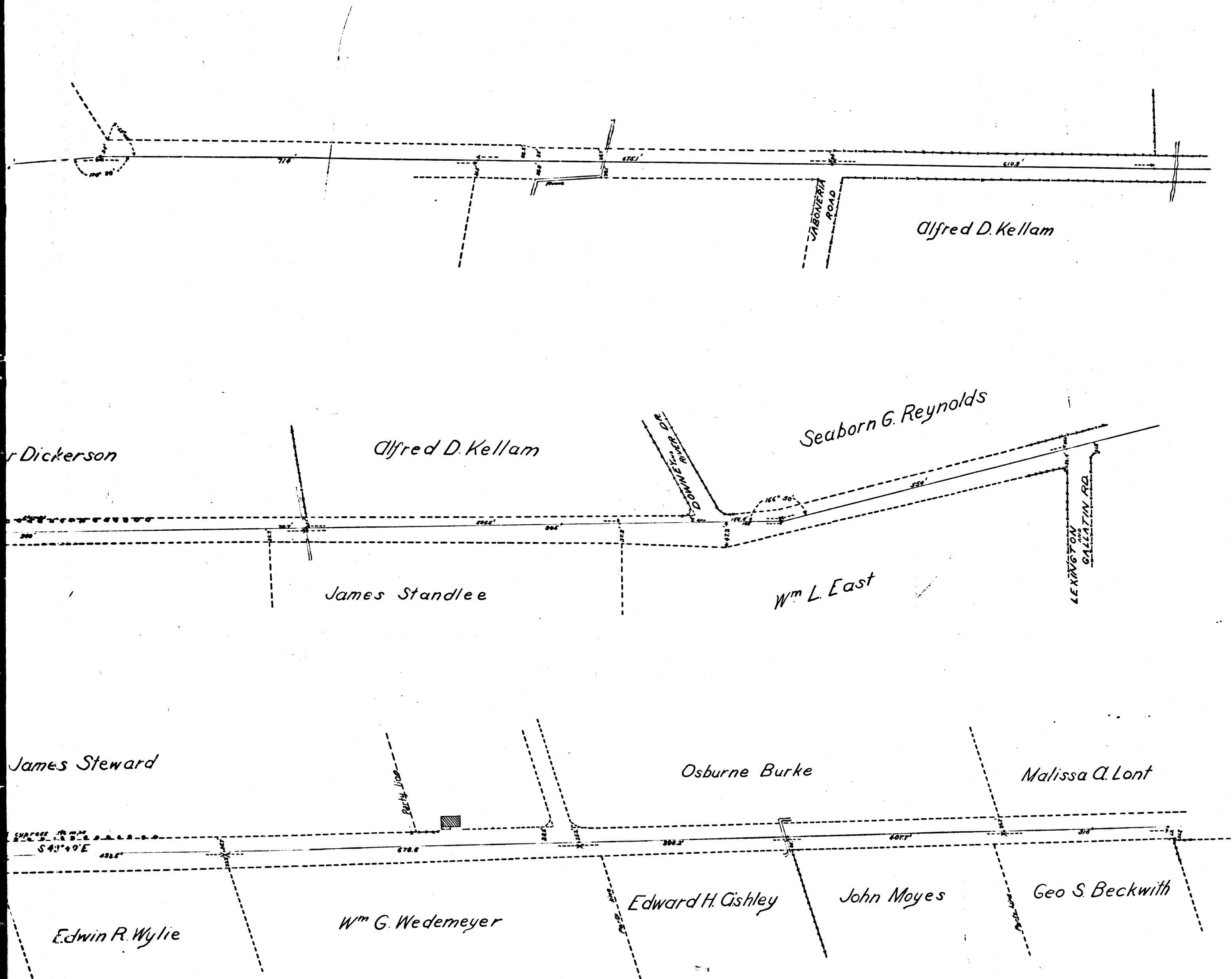


CS	1032
A1	OF A2



MAP
 showing survey of a portion of
 Anaheim Telegraph Road
 made in March 1899 by
 Jos. H. Smith County Surveyor
 scale 100' = 1"
 F. B. 20-15, 34, 35.

RETRACED FROM CLOTH MOUNTED EGG-SHELL
 ORIGINAL MAP WHICH HAS BEEN DISCARDED

RETRACED BY T. KARDOS - FEB. 8, 1957
 CHECKED BY R. J. B.

I. M. 33-36
 COUNTY SURVEYORS MAP NO. 1032

CS	10	32
A 2	OF	A 2