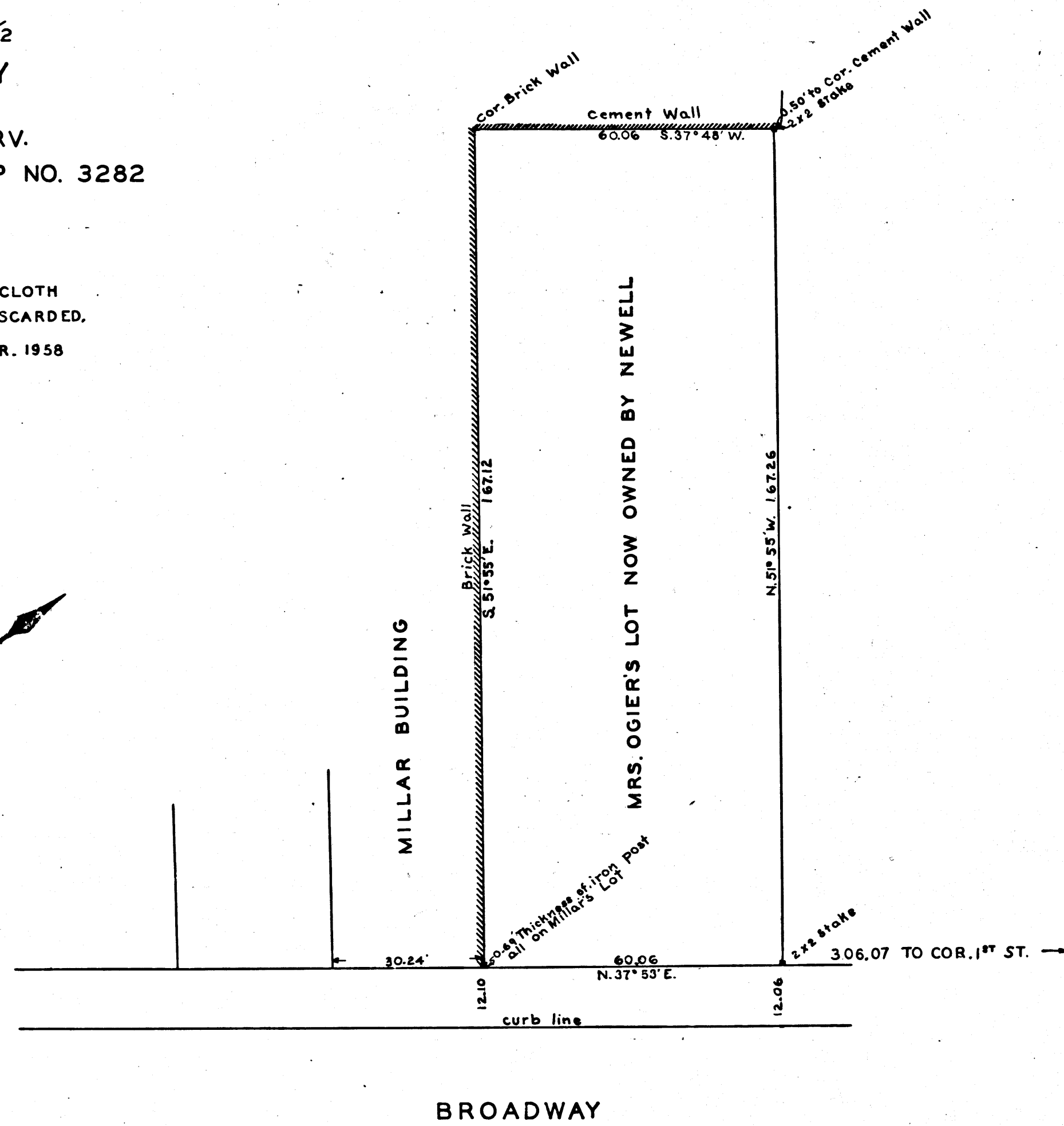
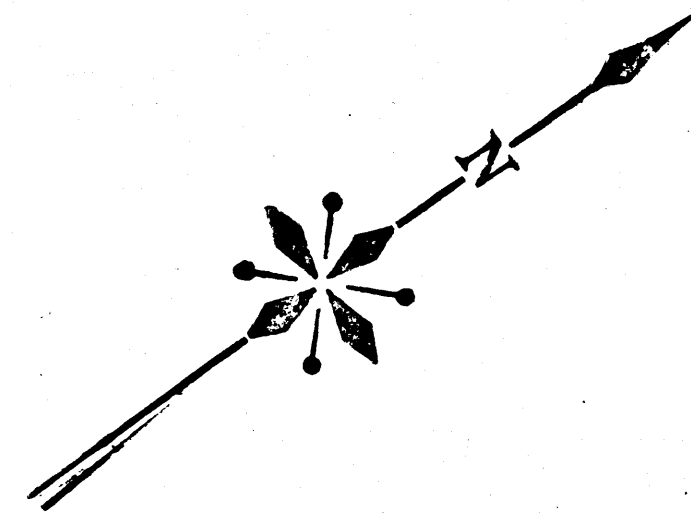


LOCATION OF  
 NEWELL & GAMMON LOT  
 IN BLK. NO. 2½  
 ORD'S SURVEY  
 SEE D.957-49  
 E.T. WRIGHT, CO. SURV.  
 COUNTY SURVEYORS MAP NO. 3282  
 SEPT. 21, 1895  
 SCALE: 20' = 1"

RETRACED FROM THE OLD TRACING CLOTH  
 ORIGINAL MAP WHICH HAS BEEN DISCARDED.  
 RETRACED BY D.C. JANNOPULO APR. 1958  
 CHECKED BY R.J.B.



CS 3282