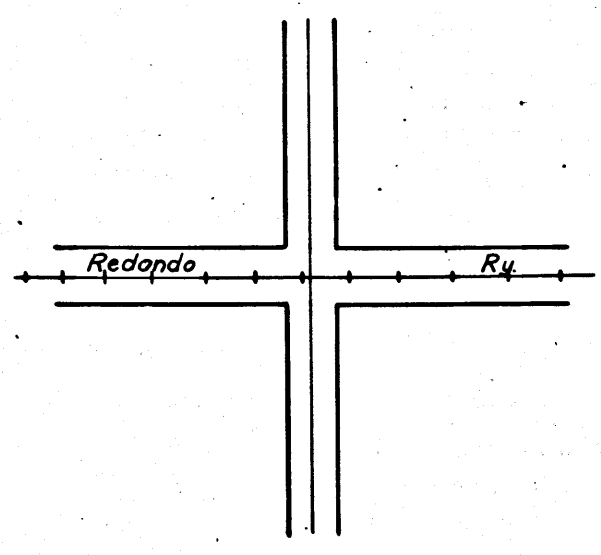
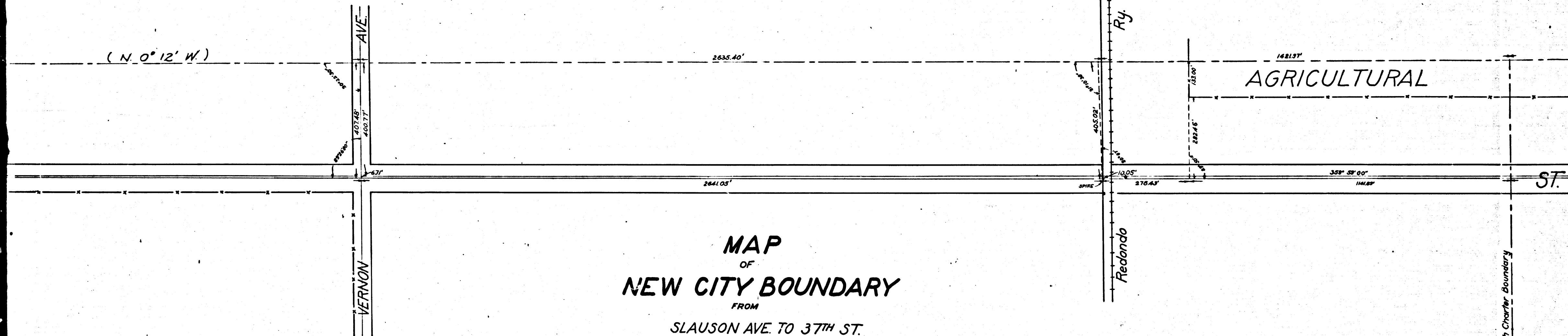


C	S	3	3	6	1
A	1	O	F	A	3



(N. 0° 12' W.)



**MAP**  
OF  
**NEW CITY BOUNDARY**

FROM  
SLAUSON AVE. TO 37TH ST.  
County Surveyors Map No. 3361  
F.B.13-2  
Nov. 1836  
Index 9 and 24  
SCALE: 1" = 200'

RETRACED FROM THE WHITE BOND  
PAPER ORIGINAL MAP WHICH HAS  
BEEN DISCARDED.

RETRACED BY T. KARDOS MAR. 1957  
CHECKED BY R.J.B.



CS	3361
A 2	OF A 3

Old South Charter Boundary

