

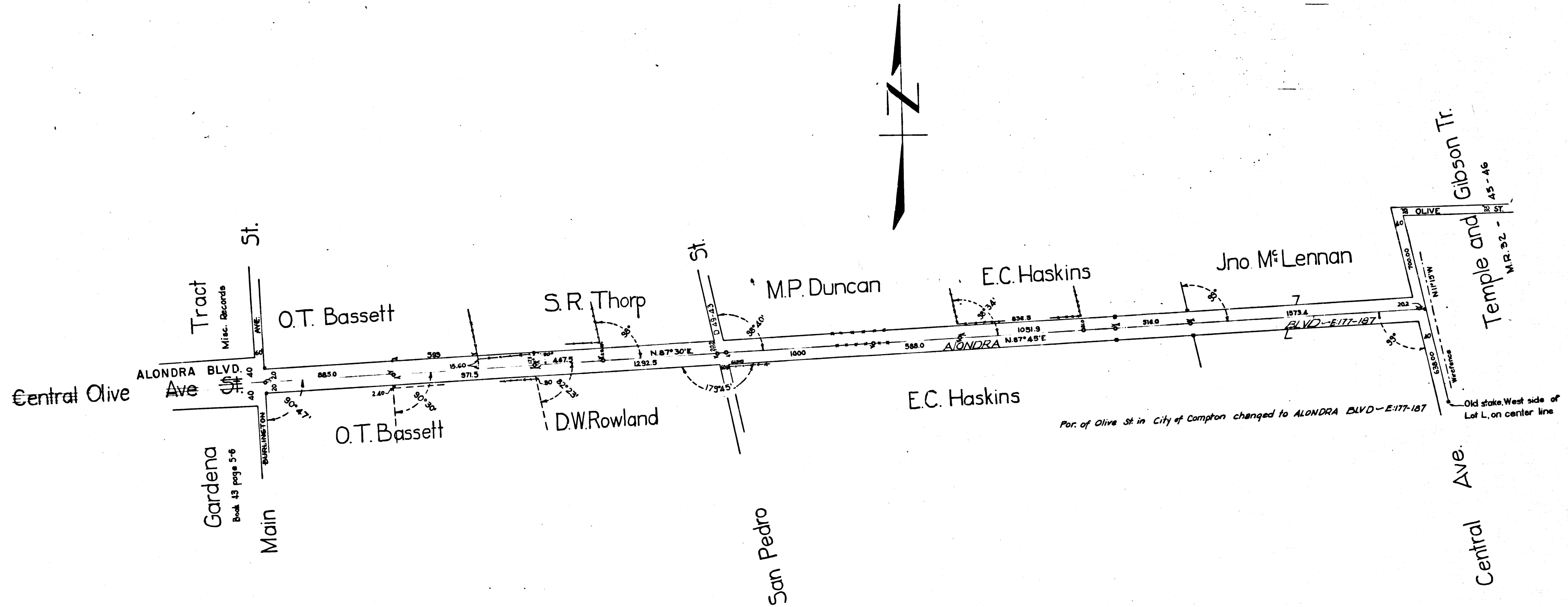
ALONDRA BLVD.
~~OLIVE ST~~ D:13-184
 GARDENA AND COMPTON ROAD

as surveyed under instructions from the Board of Supervisors
 by E.T. Wright County Surveyor March 1897 W.B. Nicholson Deputy
 DEC. 1897

COUNTY SURVEYORS MAP NO. 3403
 SCALE - 100' = 1" and 400' = 1"
 F.B. 13-27-28
 INDEX 26

RETRACED FROM THE WHITE BOND PAPER
 ORIGINAL MAP WHICH HAS BEEN DISCARDED.

RETRACED BY T. KARDOS APRIL 1957.
 CHECKED BY R.J.B.



RB 4-28 Feb. 9 1892 - Petition from R.D. Dow et al presented, praying For opening of
 Compton-Gardena and Redondo Road from Duncan's Corner to Gardena Town
 Plat. along north line D.W. Rowland and south line J.W. Thorpe.
 RB 4-66 Apr. 7 1892 - " It is ordered that the following be adopted.....
 Resolved..... that the said road is and was at the time of the closing of the
 same by D.W. Rowland, a public highway, and it is therefore ordered that the
 same be, and is declared a public highway." Co. Surveyor 4-25-1918

ICS 3403