

GARVEY ~~ARROYO AVENUE~~ BLVD.

The center line being the North line of property of E. J. Baldwin as per Judgement of Superior Court Case No. 18600
Los Angeles Co. California

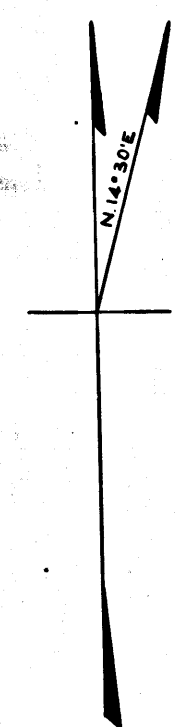
Located in May 1897 - E.T. Wright Co. Sur. Scale 1000'-1" - Scale width of Ave. 200'-1"

F.W. Skinner Dep. INDEX 47-B5 FB.12-33 See C.S. 6174

Blvd. Avenue 60ft wide

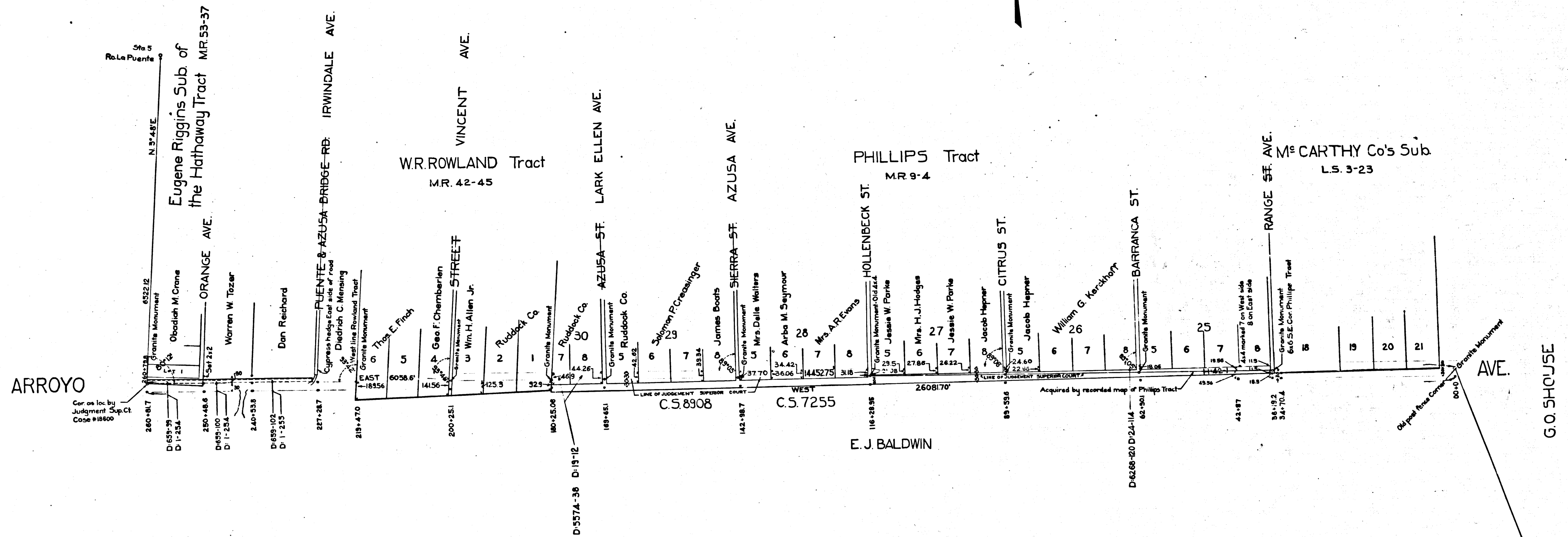
D:1145-64 D:3-33

County Surveyors Map No. 3416
For Arroyo Ave. vacated D:12-183
For Arroyo Ave. changed to Holt Ave. D:49-118



Retraced from the white bond paper original map which has been discarded.

*Traced by T. Kardos - April, 1957
Checked by R.J.B.*



ICS 3416