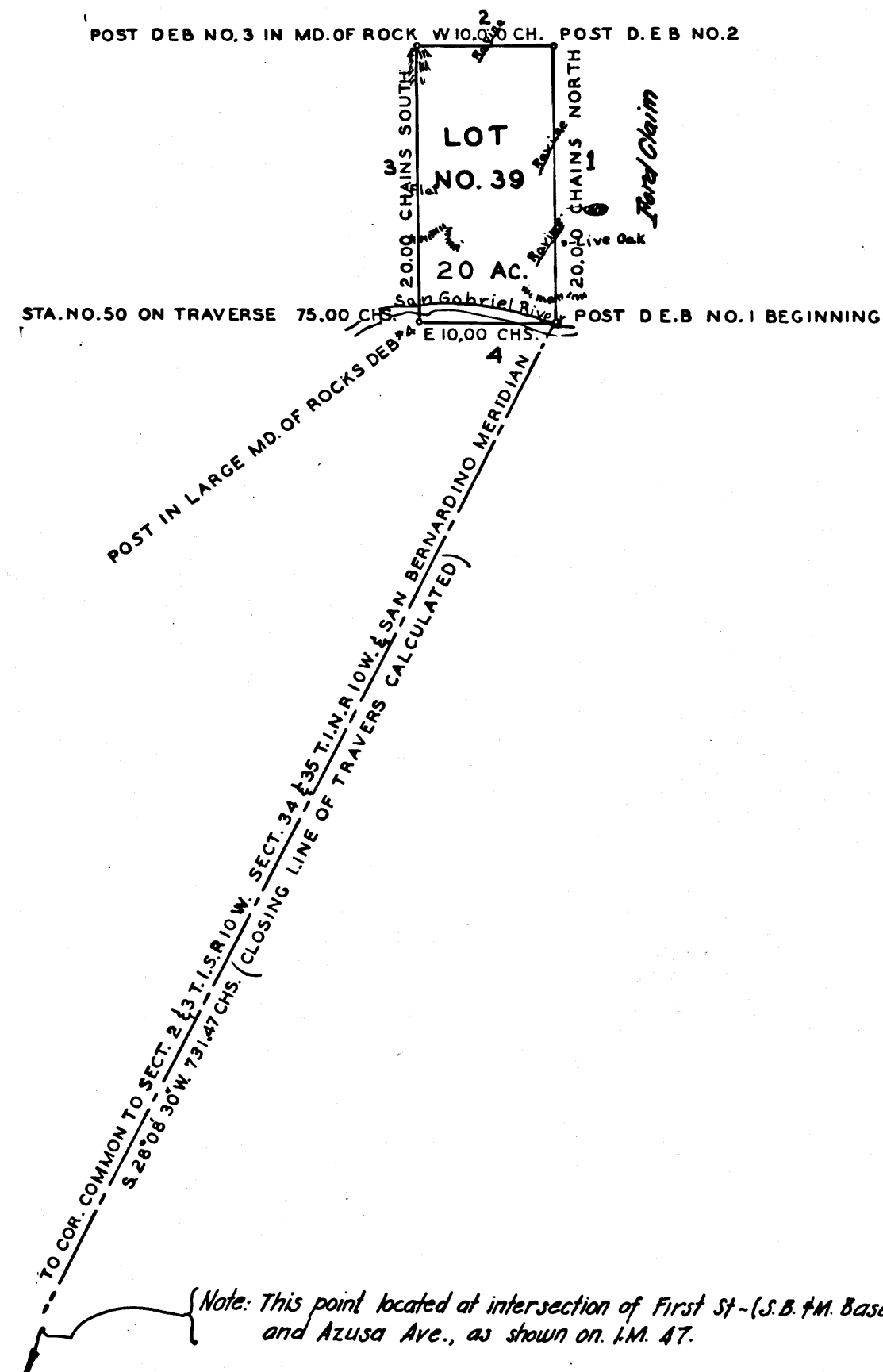


SEC. 21
T. 2 N. R. 9 W.
SAN BERNARDINO MERIDIAN

PLAT OF
BUEL PLACER MINE
CLAIMED BY
D. E. BUEL
SURVEYED BY JOHN GOLDSWORTHY
DEPUTY SURVEYOR OCT. 1872
COUNTY SURVEYORS MAP NO. 3427

SCALE: 10 CHS. = 1 IN.
VARIATION -14° 15' E
I.M. 15

RETRACED FROM THE OLD TRACING CLOTH
ORIGINAL MAP WHICH HAS BEEN DISCARDED.
RETRACED BY D. C. JANNOPULO. APR. 1958
CHECKED BY R. J. B.



BOUNDARIES		
No	COURSE	DISTANCE
1	NORTH	20.00 CHS.
2	WEST	10.00 "
3	SOUTH	20.00 "
4	EAST	10.00 "

CERTIFICATE

L. O. Hansen bugh

U.S. SURVEYOR GENERAL FOR CAL.

CS 3427