

ROSEMEAD BLVD.

Part of

Rivera and Barlow Road

Surveyed Sept. 15 & 16 1897

E.T. Wright Co. Sur.

J.O. Marsh Deputy

County Surveyors Map No. 3433

Road Papers 197

Scale 3 Chs = 1 in. F.B. 12-57

INDEX 36-D-4

RETRACED FROM THE WHITE PAPER BOND

ORIGINAL MAP WHICH HAS BEEN DISCARDED.

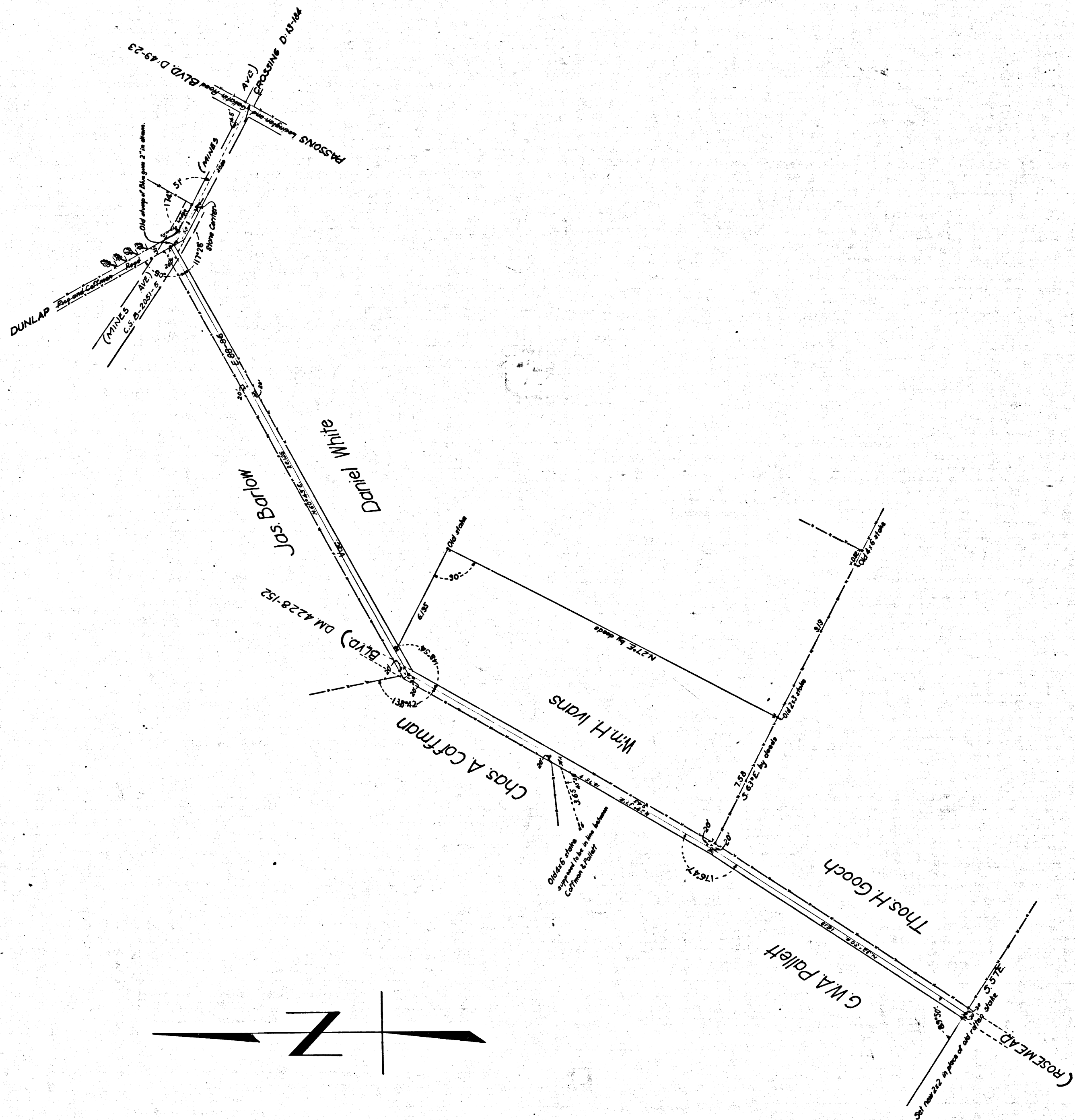
RETRACED BY T. KARDOS, APR. 1957

CHECKED BY R.J.B.

Por. of Rivera and Barlow Road changed to San Gabriel Blvd. D-49-23 RB.35-306

(revised portion)

Por. of Rivera and Barlow Road for Far Mines Ave. ~ E. 10.-279, O.R. 35418-202



CS 3433