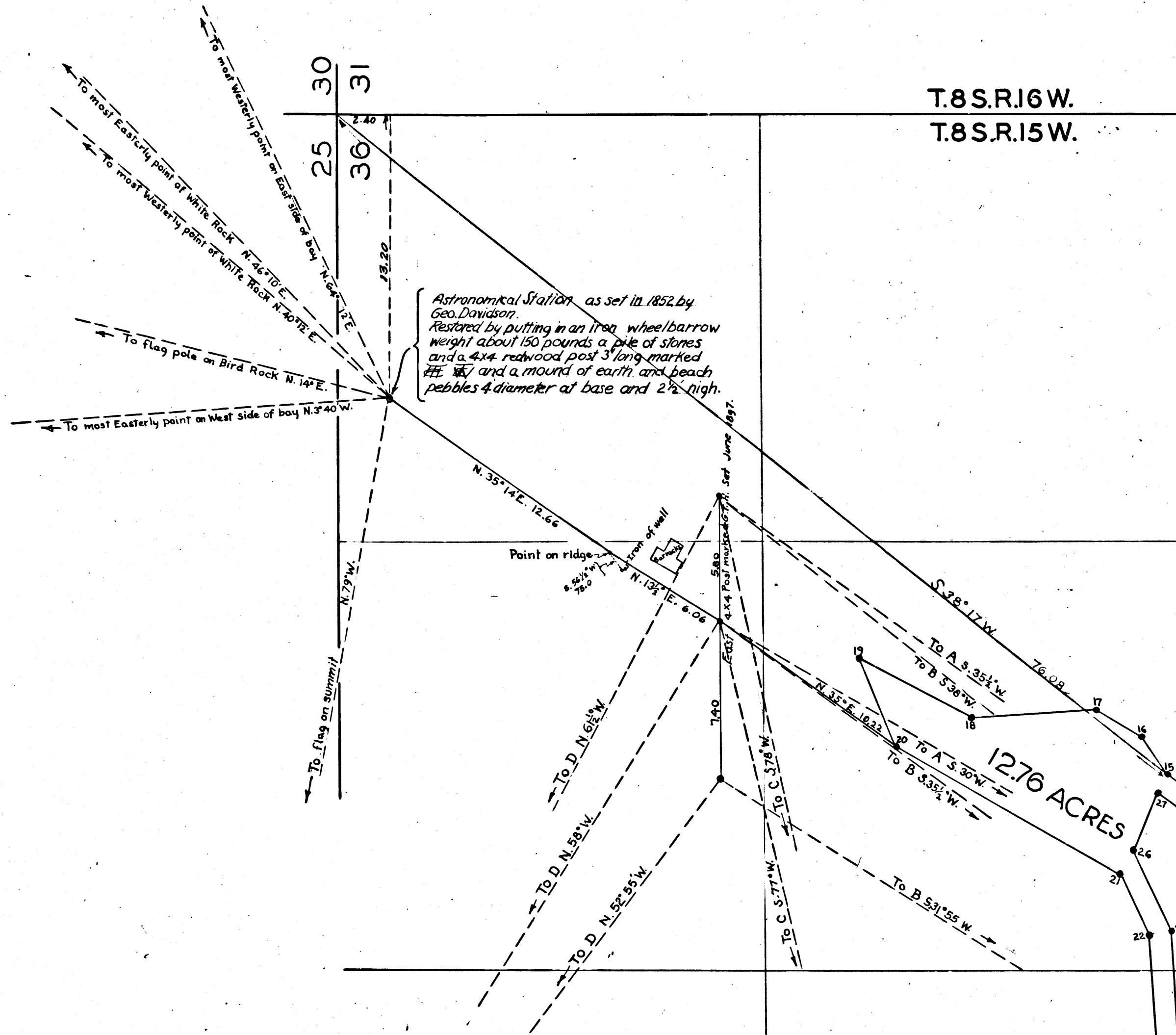


T.8S.R.16W.
T.8S.R.15W.

Stns	Course	Dist.
1-2	S 52° W	3.03
2-3	S 10° 30' W	4.54
3-4	S 14° E	6.06
4-5	N 44° E	3.78
5-6	N 9° E	2.27
6-7	N 42° 30' E	3.03
7-8	N 7° E	4.85
8-9	N 49° 30' E	1.97
9-10	N 60° E	6.59
10-11	N 17° E	3.03
11-12	N 12° 30' W	3.03
12-13	N 5° E	1.76
13-14	N 21° E	4.35
14-15	N 36° E	5.75
15-16	N 52° 30' E	2.12
16-17	N 32° E	2.42
17-18	N 4° W	5.91
18-19	N 27° 30' E	6.06
19-20	S 67° W	4.54
20-21	S 29° 30' W	12.12
21-22	S 64° W	3.18
22-23	S 87° W	6.50
23-24	S 00° W	1.00
24-25	N 87° E	6.74
25-26	N 64° E	4.18
26-27	S 65° 30' E	3.90
27-28	S 36° W	5.73
28-29	S 21° W	4.62
29-30	S 5° W	2.04
30-31	S 12° 30' E	3.00
31-32	S 77° W	2.40
32-33	S 60° W	6.31
33-34	S 49° 30' W	2.50
34-35	S 7° W	4.91
35-36	S 42° 30' W	3.09
36-37	N 78° 30' W	2.45
37-38	N 10° 30' E	4.20
38-39	N 52° E	2.68
39-1	N 38° W	1.00

EXPLANATION-

- A-6X6" Post on N. end of sand spit.
- B-Peak at Water with signal service post.
- C-High Peak signal post.
- D-High Peak signal post.



Map of Tide Land
at Isthmus Santa Catalina Island

Surveyed June and Aug. 1897

by G.T. Healey and E.T. Wright

Scale: 4 chs. = 1 inch
COUNTY SURVEYORS MAP NO. 3434

See Field Book 13 pages 45 and 68
Cal Book 1 page 291
Cal Book 3 page 42

I.M. 29

3/4" Post of High Tide
at N. end of Ballast
marked $\frac{1}{4}$

Retraced from the white bond paper
original map which has been discarded.

Traced by D. Jannopoulos - Dec., 1957
Checked by R.J.B.

CS 3434