

Lugo School House and Lynwood Road in Rancho San Antonio

As surveyed under instructions of the Honorable
Board of Supervisors

Oct. 1897.

by E.T. Wright, Co. Sur.

Scale: 5 chs = 1 in
F.B. 12-657

Viewers { John Gries
Benj. Walton
E.T. Wright

I.M. 32

COUNTY SURVEYORS MAP NO. 3439

RETRACED FROM THE WHITE BOND PAPER
ORIGINAL MAP WHICH HAS BEEN DISCARDED.

RETRACED BY T. KARDOS, DEC. 1957.
CHECKED BY R.J.B.

Sessions

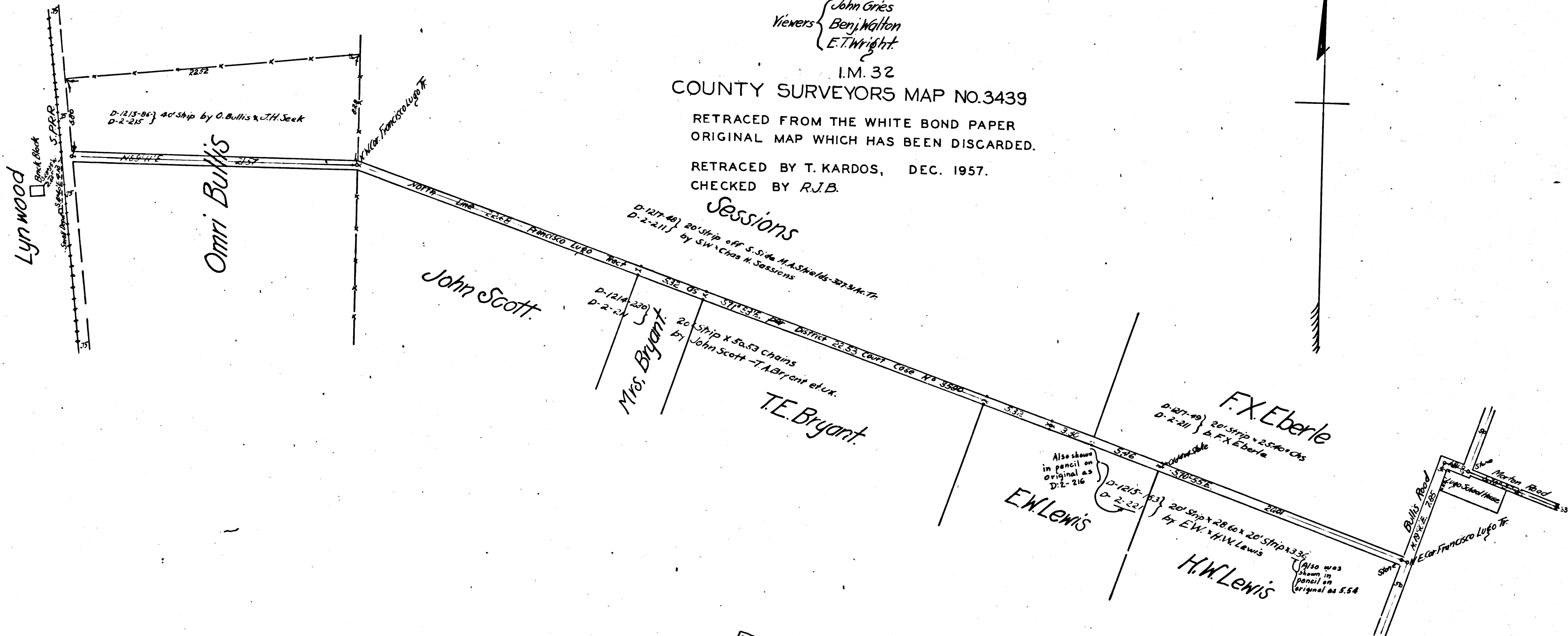
D-1217-40 } 20' Strip off S. Side M.A. Shields-27734-77
D-2-211 } by SW & Chas H. Sessions

D-1214-220 }
D-2-224 } 20' Strip x 50.53 chains
by John Scott - T.A. Bryant et ux.

Also shown
in pencil on
original as
D-2-216

D-1215-433 }
D-2-222 } 20' Strip x 28.60 x 20' Strip x 33.6
by E.W. & H.W. Lewis

Also was
shown in
pencil on
original as 554



FRANCISCO LUGO
234.09 a.
C.F. Map No. 116
D.C.C. #3590

CS 3439