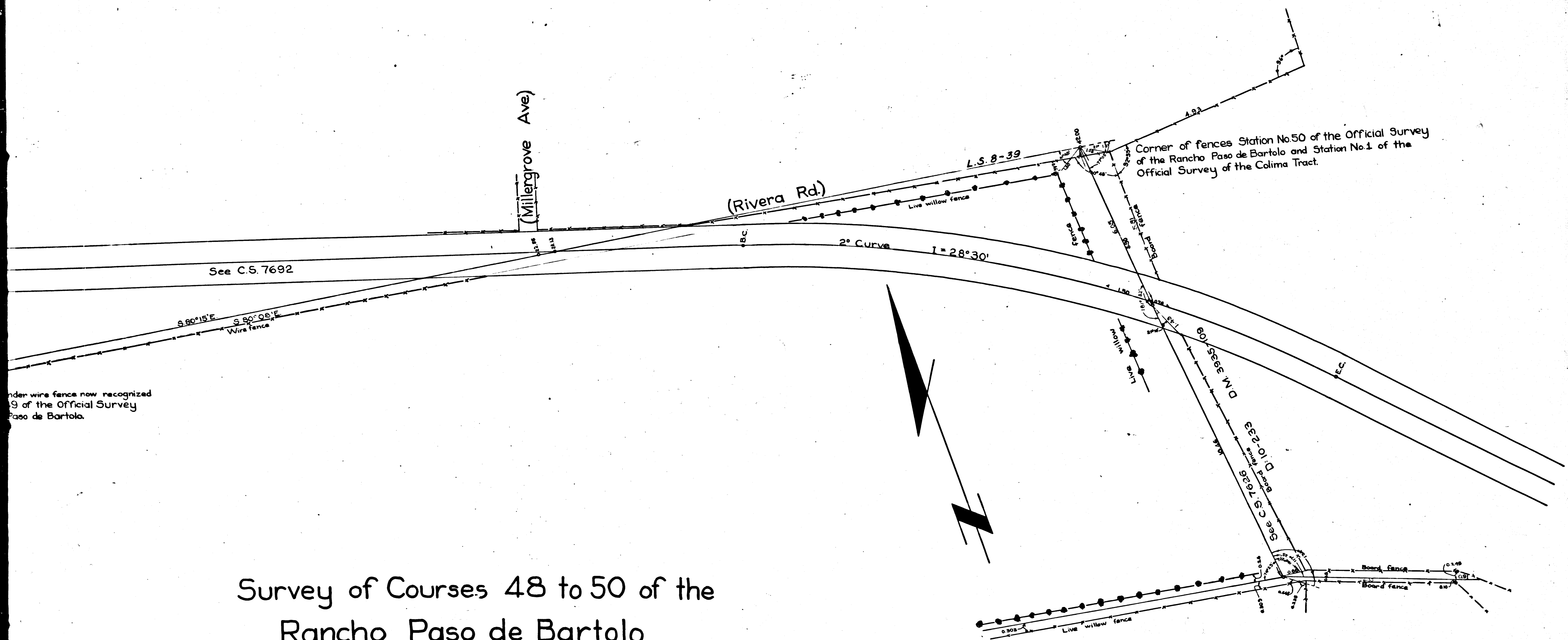


Stone & Stake under wire fence now recognized as Station N^o 49 of the Official Survey of the Rancho Paso de Bartolo.

C	S	3	4	5	5
A	1	OF	A	2	



Survey of Courses 48 to 50 of the Rancho Paso de Bartolo

AND
 Course 7 to 1 of the Colima Tract
 Surveyed Jan. 11, 1898 by E. T. Wright Co. Sur.
 Var. 13° 30' Scale: 1 in. = 2 chs.
 Green lines Show Closing Courses
 County Surveyors Map No. 3455 ~

I.M. 36
 " 33

RETRACED FROM THE WHITE BOND PAPER ORIGINAL MAP WHICH HAS BEEN DISCARDED.
 RETRACED BY T. KARDOS, OCT. 14, 1957.
 CHECKED BY R.J.B.

	CS		3455
	A 2	OF	A 2