

Resurvey of Glassell Road

by order of
The Hon. Board of Supervisors
by E.T. Wright Co. Sur.
Mar. 1898
J.O. Marsh, Deputy

Scale 150' to 1" in

F. B. 17-64

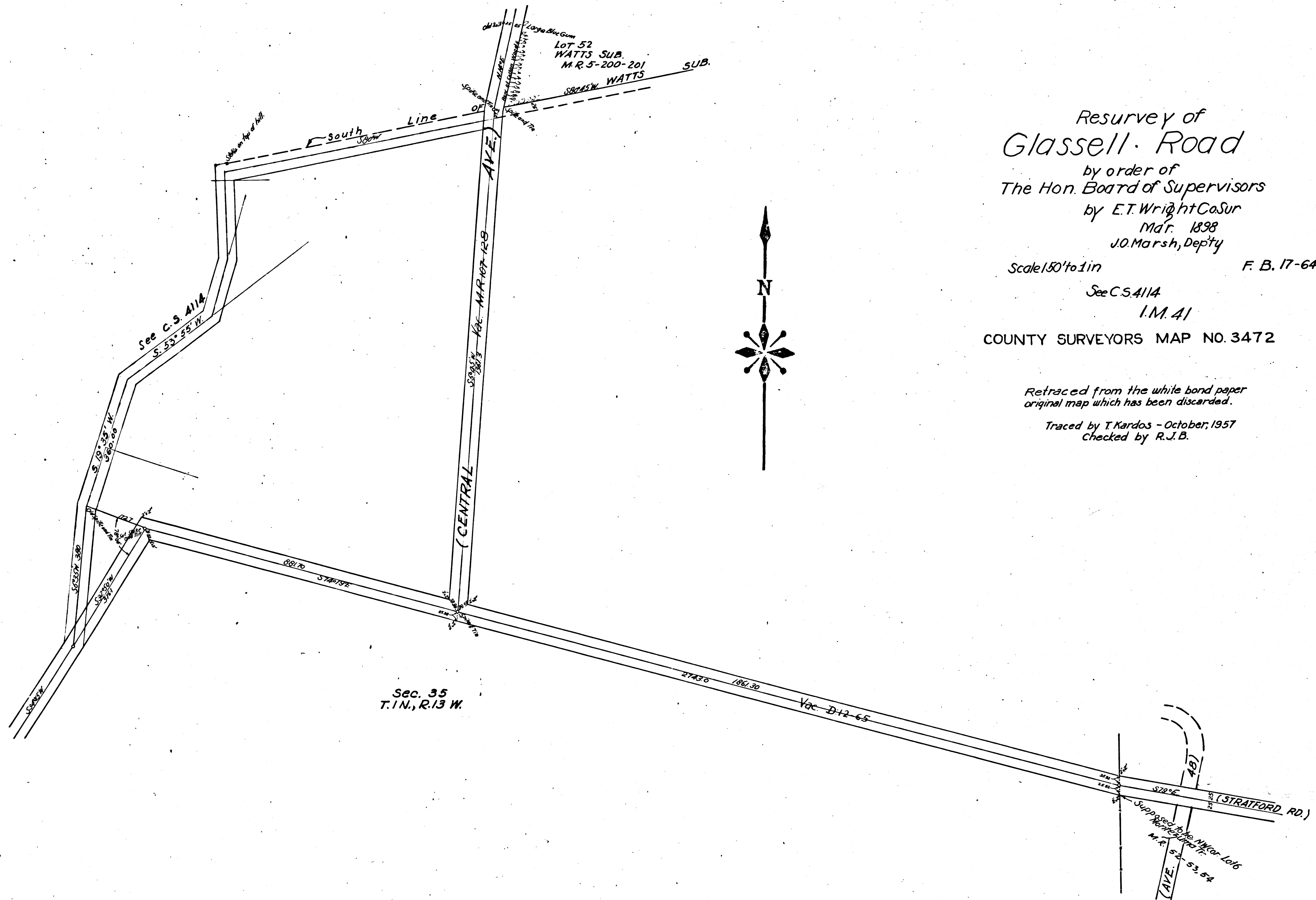
See C.S. 4114

I.M. 41

COUNTY SURVEYORS MAP NO. 3472

Retraced from the white bond paper
original map which has been discarded.

Traced by T. Kardos - October, 1957
Checked by R.J.B.



C	S	3	4	7	2
---	---	---	---	---	---