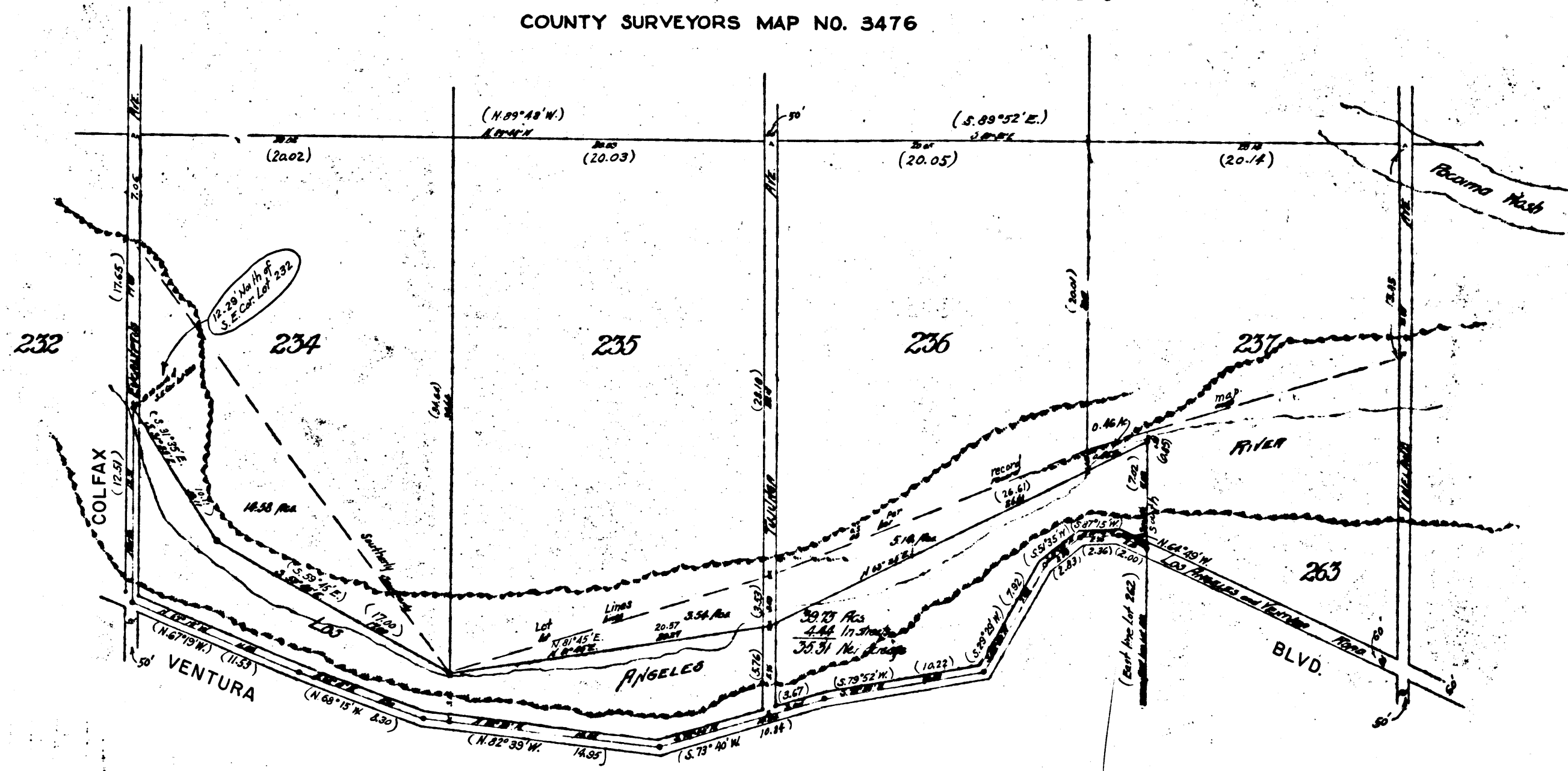


Plat showing  
Land of J. B. Lankershim  
lying between Lots 234, 235, 236 and 237 of the  
Lankershim Ranch & The L. A. & Ventura Rd. VENTURA BLVD.  
Surveyed in February 1898  
by Wright & Nicholson

Scale: 60ths - 1 in.

I.M. 54-B-5

COUNTY SURVEYORS MAP NO. 3476



Figures & Bearings shown in C. ) are same as the blurred printing of this map and are identical with the original map.

See Field Books.  
 N & N. 126-36 to 49  
 County. 15-78 to 80 #

Note: The original paper had copy map is filed at vault together with a Negative of this map made from an Auto. Positive print of the original map. The A.P. print discarded.  
 W. J. B.  
 7-5-57

