

CITY OF LOS ANGELES ORD. No. 45398

COCHRAN AVE
CAHUENGA VALLEY AND BALLONA ROAD

Surveyed Mar. 7, 1898 by E.T. Wright Co. Sur. C.N. Purry Dep.

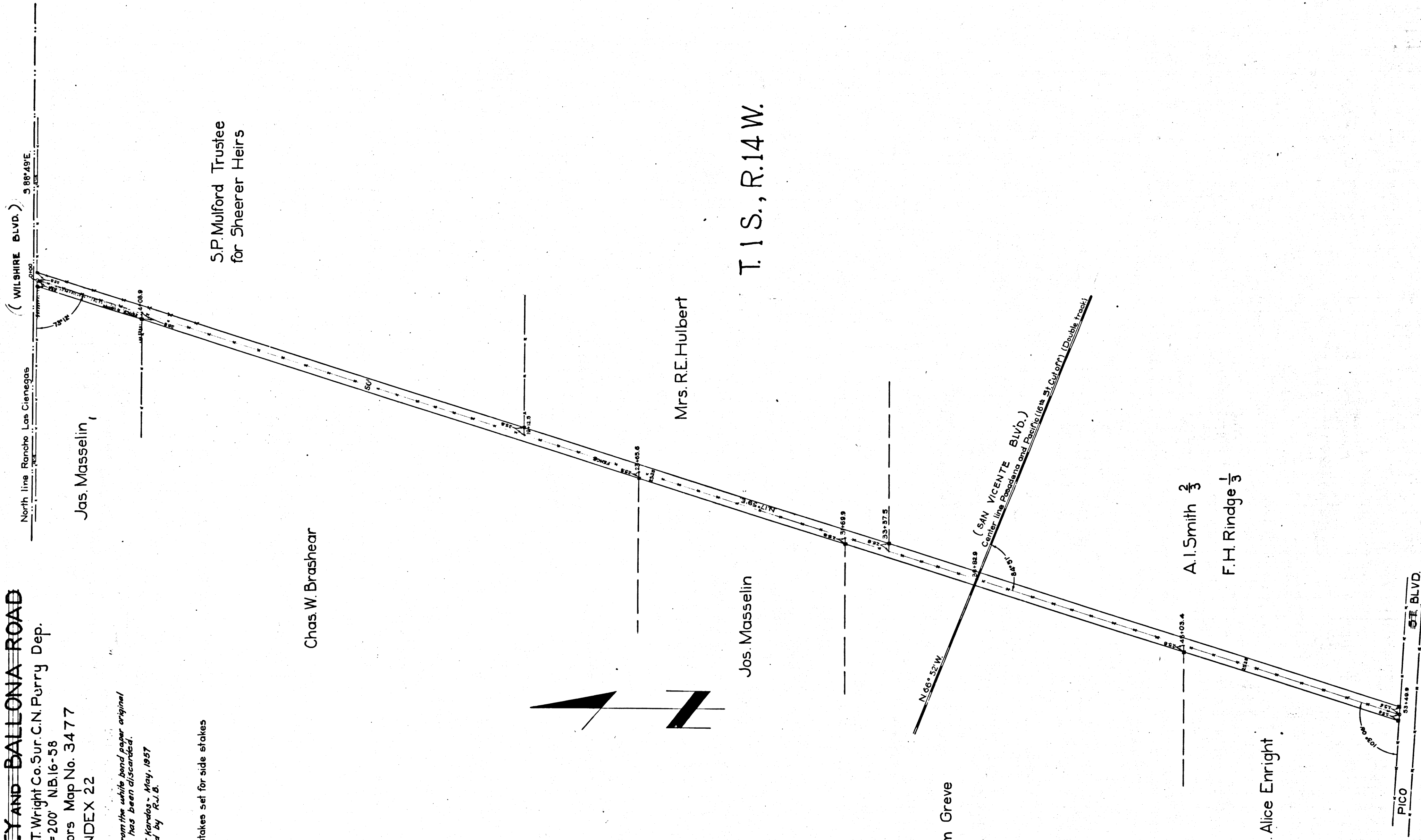
SCALE 1"=200' NB. 16-58

County Surveyors Map No. 3477

INDEX 22

*Retraced from the white bond paper original map which has been discarded.
Traced by T. Kardos - May, 1957
Checked by R.L.B.*

■ denotes 2"x2" stakes set for side stakes



CS 3477