

LAKELAND ROAD
& MEYER ROAD

~~A PART OF OLD TELEGRAPH ROAD~~

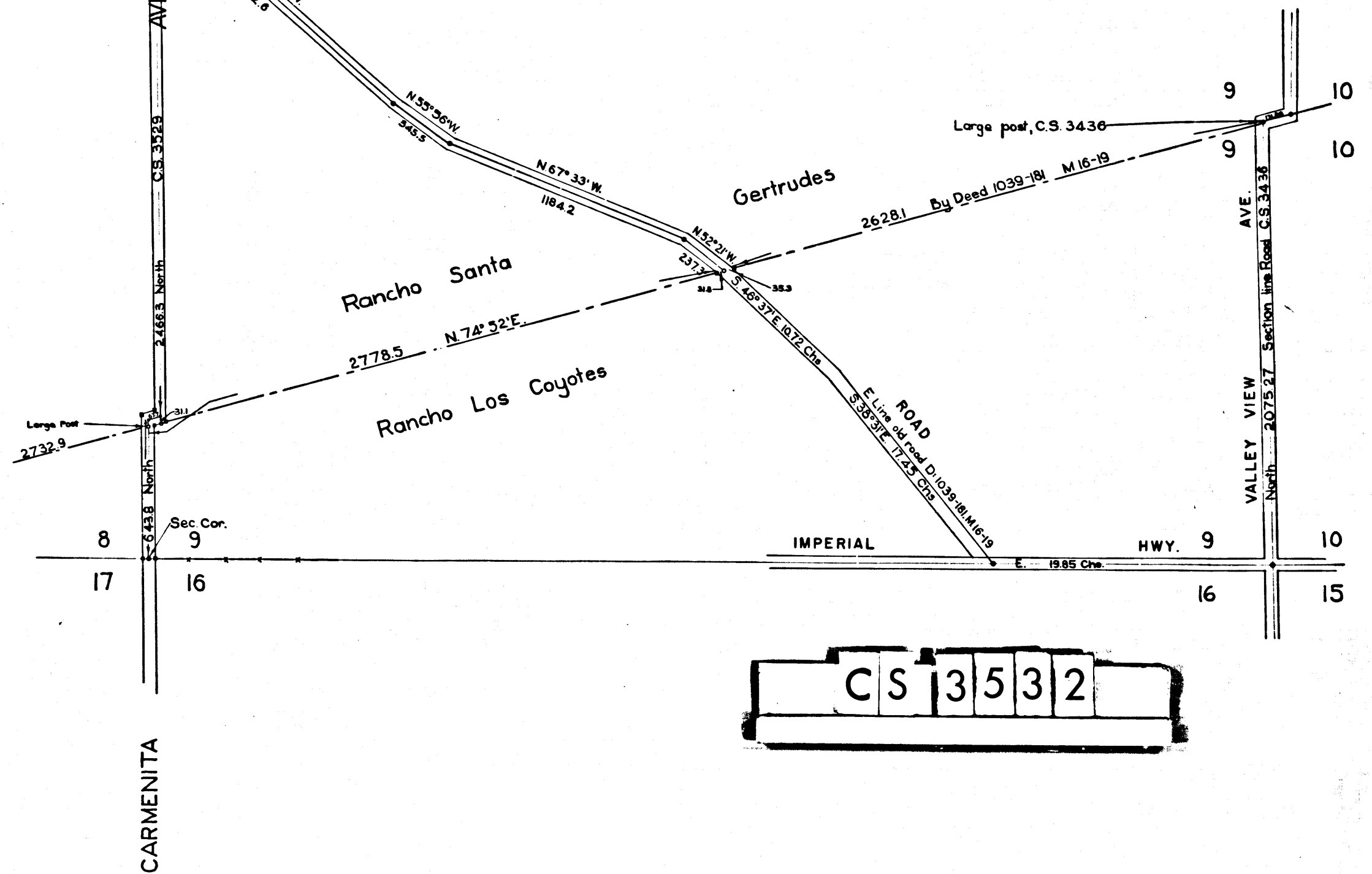
as located from old fences and deeds
SCALE 1" = 400', Dec. 1898, E. T. Wright Co. Sur., F.B. 18-26
County Surveyors Map No. 3532

I.M. 34

- For Vacation of Old roads see D:26-114
- " Dedication of new roads see M.E. 36-53-57
- " Leffingwell Road see D:27-174 D.6720-134
- " " " " " -176 D.6692-342

Retraced from the white bond paper
original map which has been discarded.

Traced by T. Kardos, May, 1857
Checked by R.J.B.



CS 3532