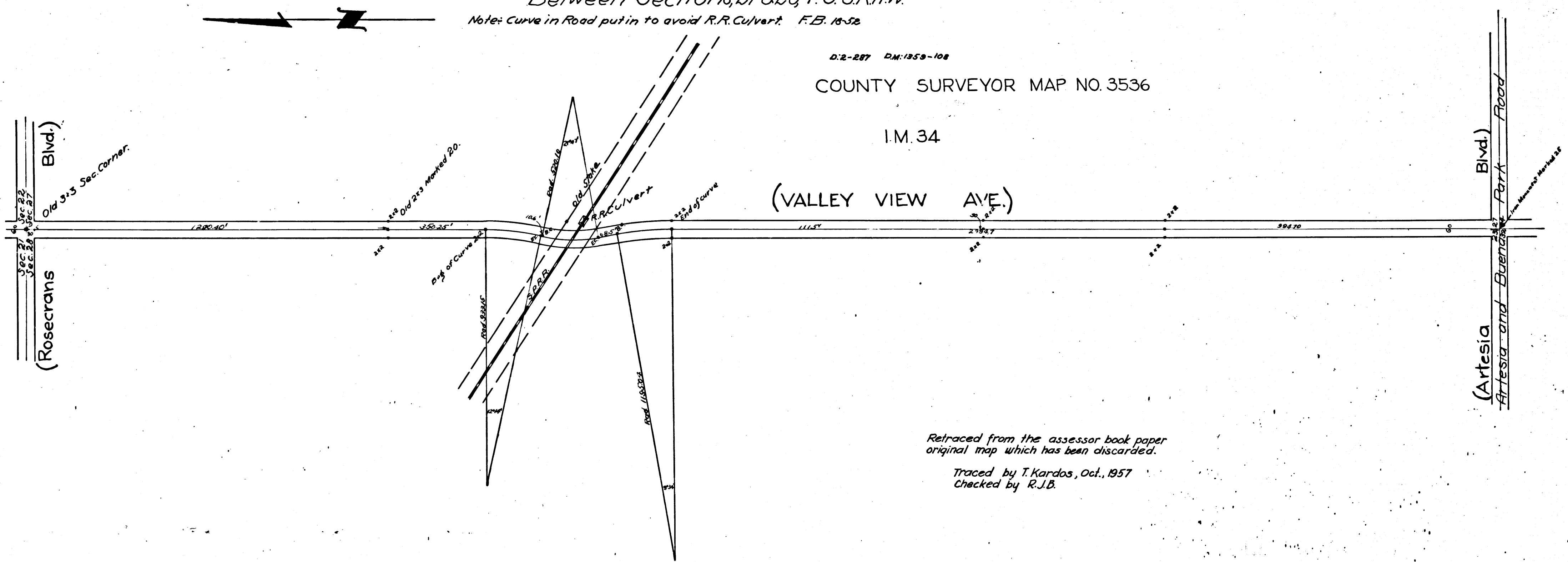


MAP
 of part of
Westminster and Whittier Road
 As surveyed by order of the Hon. Board of Supervisors Jan. 10, 1900.
 Jos. H. Smith Co. Surveyor. Leo V. Youngworth, Deputy.
 Scale 200' = 1" Var. 14° 30' East
 Between Sections 27 & 28, T. 3. S. R. 11. W.
 Note: Curve in Road put in to avoid R.R. Culvert. F.B. 18-52

D. 2-287 D.M. 1858-108
 COUNTY SURVEYOR MAP NO. 3536

I.M. 34

(VALLEY VIEW AVE.)



Retraced from the assessor book paper
 original map which has been discarded.
 Traced by T. Kardos, Oct., 1957
 Checked by R.J.B.

	CS		3	5	3	6	
--	----	--	---	---	---	---	--