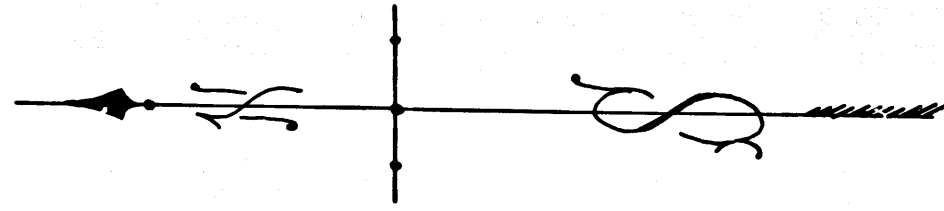


Map of a part of
San Fernando Pass Road
 From the N.E. cor of Lot B, to S.E. cor. of Lot 34
 Surveyed April 28th, 1900, by Jos. H. Smith, Co. Sur.; (See M.R. 196-309)
 Lines run according to deeds 702-100, 735-14, 685-303
 SCALE - 1" = 100'
 COUNTY SURVEYORS MAP NO. 3542

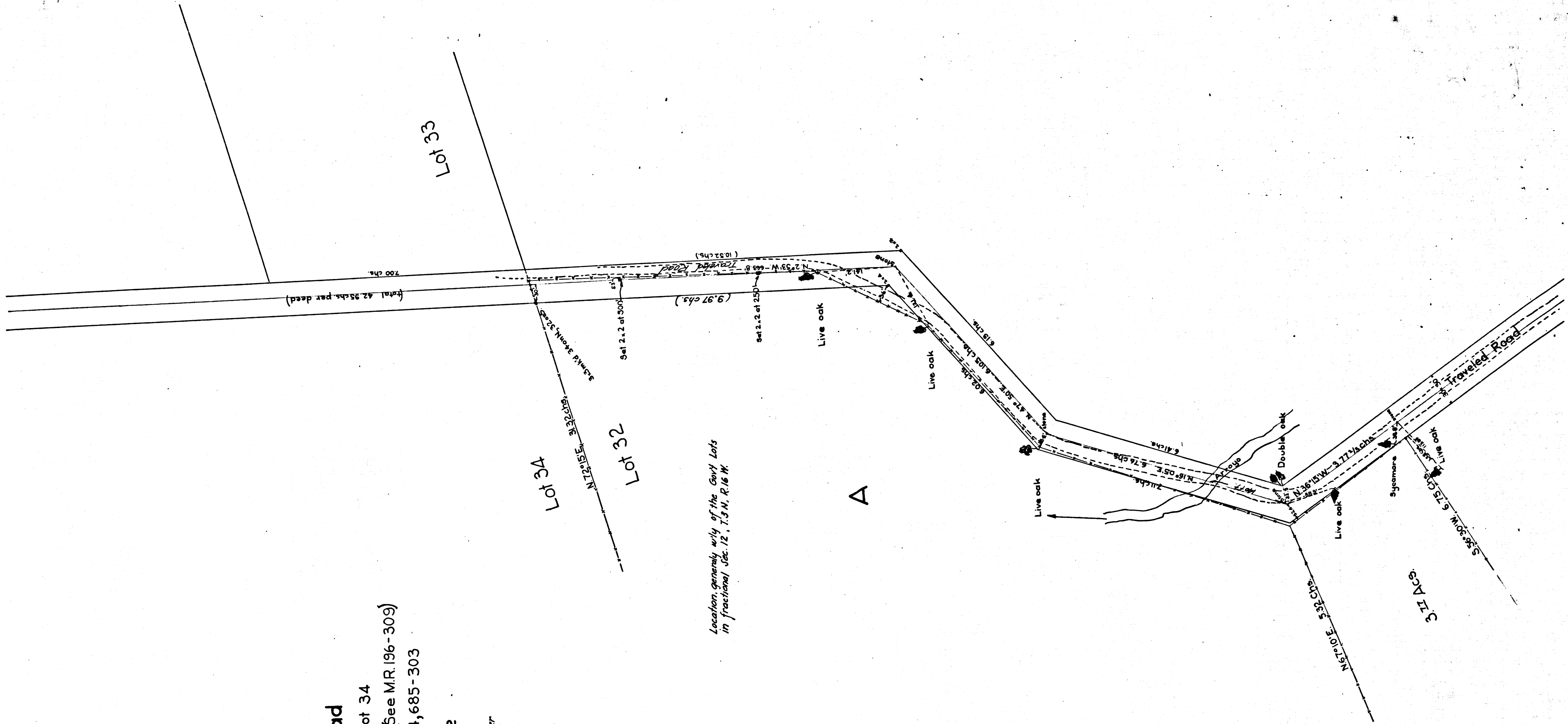
*Retraced from the assessor book paper
 original map which has been discarded.*

*Traced by T. Kardos, July, 1957
 Checked by R.J.B.*

I. M. 62



*Location, generally, wily of the Govt. Lots
 in fractional Sec. 12, T.3 N., R. 16 W.*



C	S	3	5	4	2
---	---	---	---	---	---