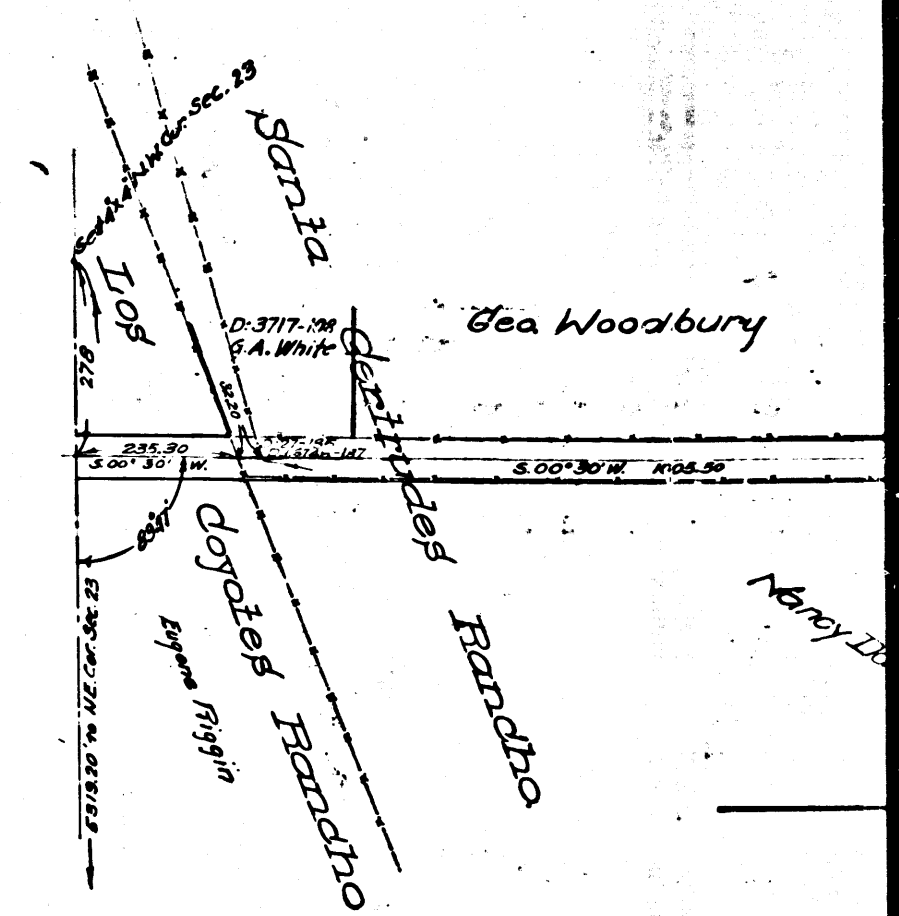
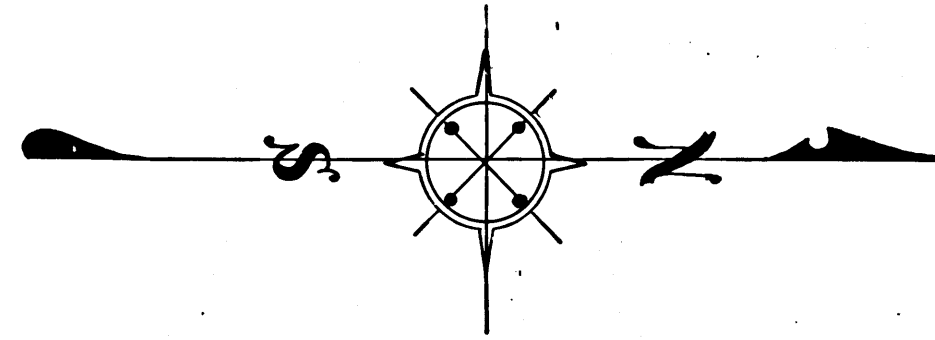


This "photact" reproduction made Dec., 1956 from the assessor book paper original maps which have been discarded.

Relaunched by R.J. Black, April, 1957
Checked by E. Foggione



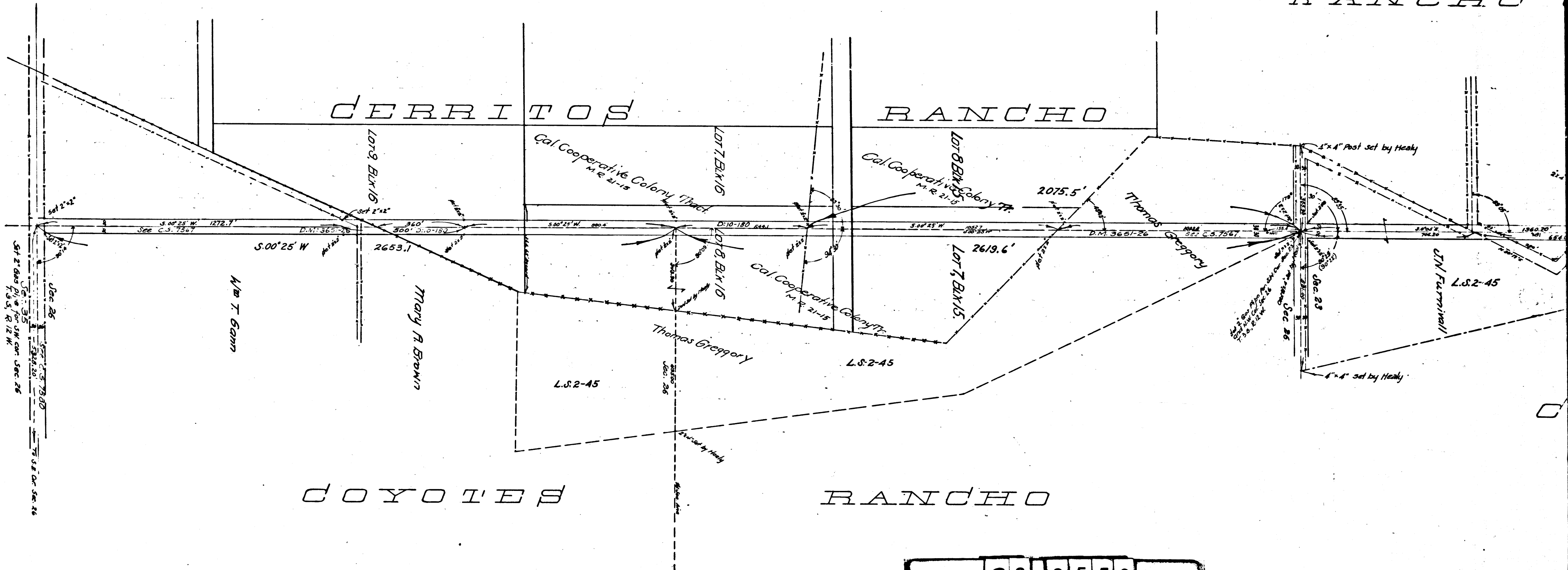
RANCHO

CERRITOS

RANCHO

DOYOTES

RANCHO



CS	3550
A1	OF A2

WOODRUFF AVENUE

~~Section Line Road~~

Along the West Line of Secs 14, 23, 26 of T. 3, S. R. 12, W.

Jos. H. Smith Co. Surveyor

Surveyed Sep, Oct 1900

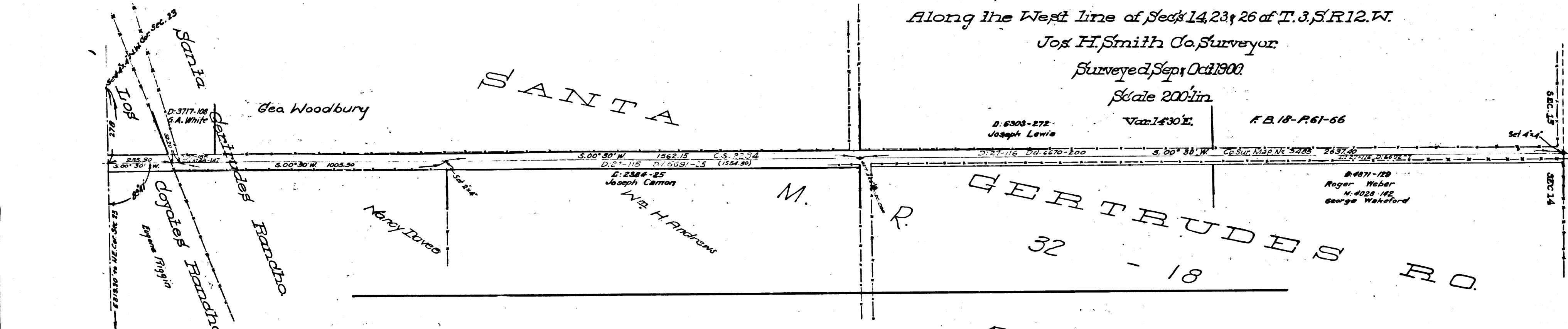
Scale 200' in

D. 6303-272
Joseph Lewis

Var. 14° 30' E.

F.B. 18-P. 61-66

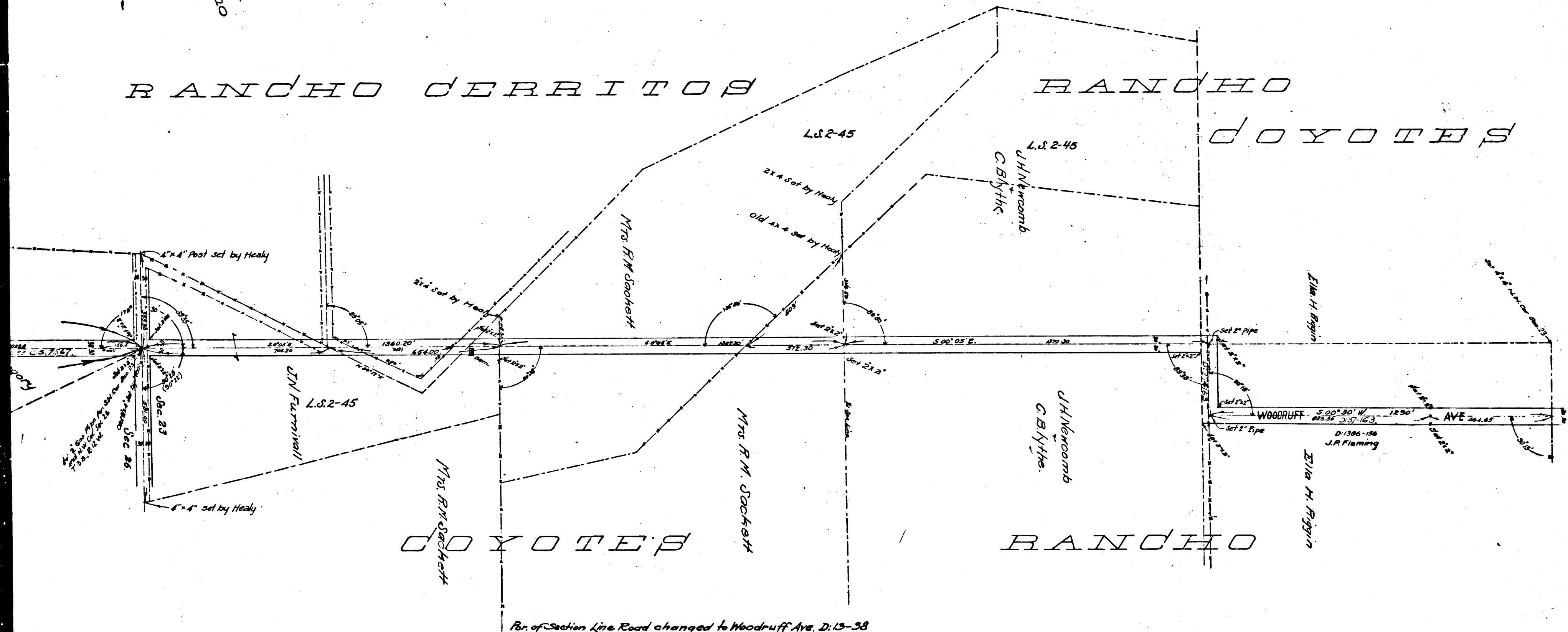
See C.S. 7272 for
Continuation of street deeds.



RANCHO CERRITOS

RANCHO

DOYOTES



Por. of Section Line Road changed to Woodruff Ave. D. 13-28

Note: The original map, composed of two sheets, have been combined into this reproduction by matching along the E-W Section Line through to Sections 23 and 26, T. 3, S. R. 12, W. R. 18.

COUNTY SURVEYORS MAP NO. 3550

INDEX SHEET NO. 33

