

COUNTY SURVEYORS MAP NO. 3553

Map

of a portion of the

NORWALK AND PUENTE MILLS ROAD

Surveyed Jan. 1901 F.B. 23-13-1

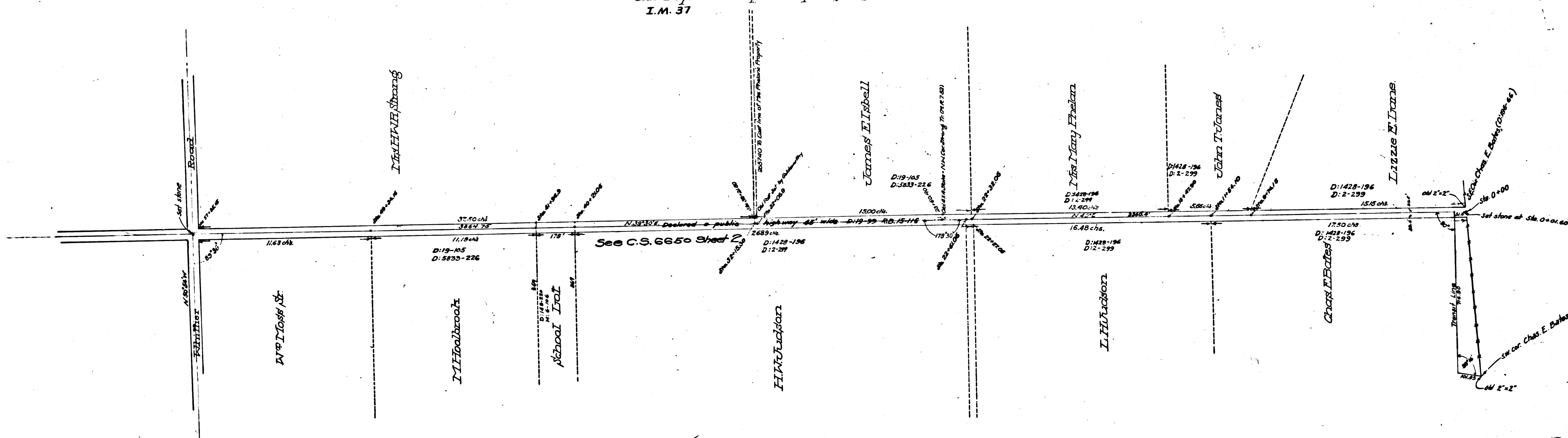
Joseph H. Smith Co. Sur.

Scale 1 inch = 200'

Note: Red figures as per assessment book

Note: For previous survey see County Surveyors Map No. 7023

I.M. 37



Note: This Photact Reproduction tracing made from Assessor Book paper original Dec. 1956. The original has been discarded. The figures & deed ref. shown on the "School Lot" were in pencil on the original.

Retouched May, 1957 by R.J. Black

CS 3553