

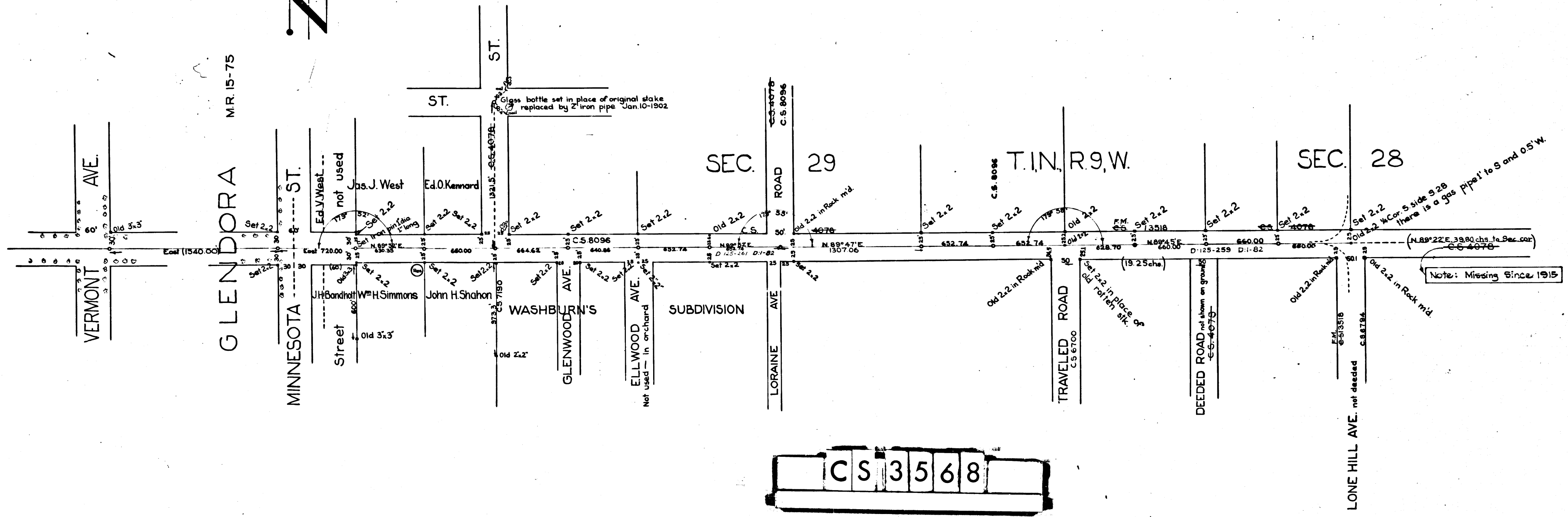
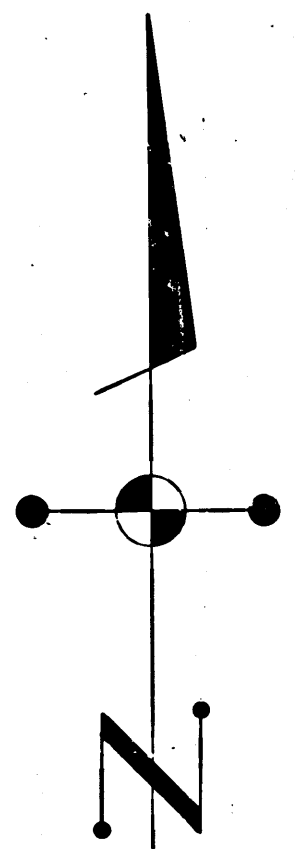
FOOTHILL BLVD.  
 MAP OF  
~~MINNEHaha AVE~~  
 SHOWING

Connection to be deeded colored   
 Jos. H. Smith, Co. Sur. Jan. 10-1902  
 SCALE: LONITUDINAL 500ft = 1inch  
 " WIDTH OF STS. 100ft = 1inch  
 County Surveyors Map No. 3568  
 F.B.25-2

Retraced by T. Kardos Aug. 1957  
 Checked by J. Black

INDEX 48

Minnehaha Ave. changed to Foothill Blvd. D:30-167 Ord. 218



CS 3568