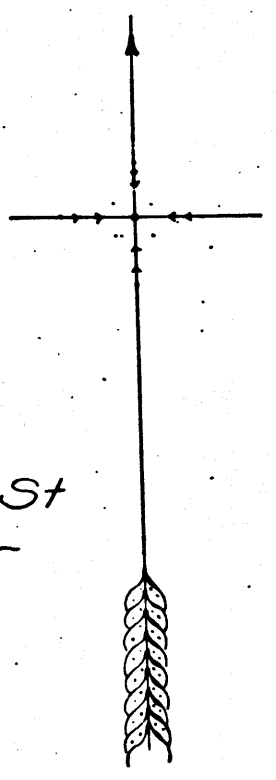
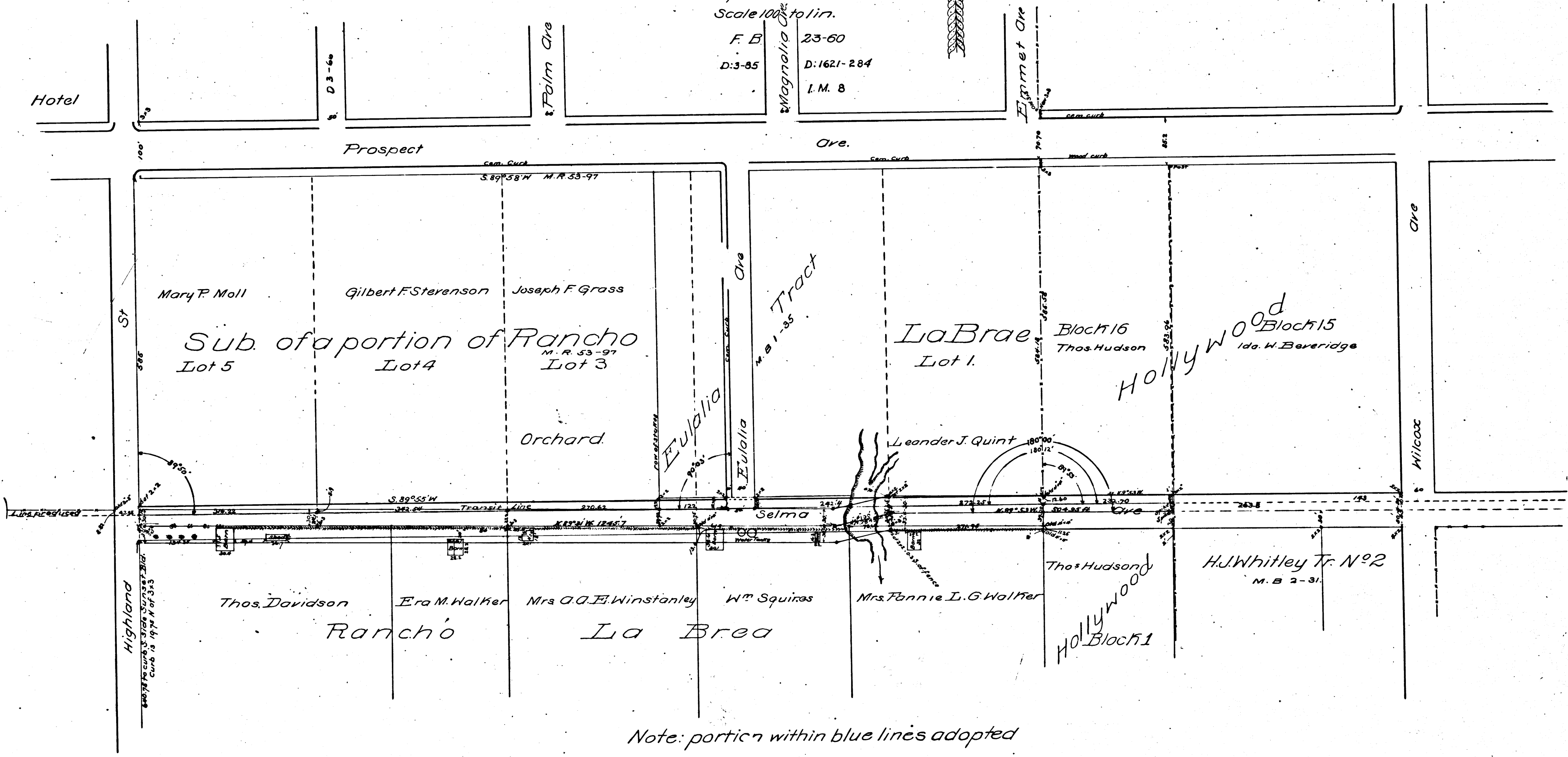


**MAP OF
SELMA AVE**
FOR EXTENSION FROM
Whitley Tract N^o2 to Highland St
Jos. H. Smith County Surveyor
September 1892
Scale 100' to 1 in.



F. B. 23-60
D: 3-85 D: 1621-284
I. M. 8



Note: portion within blue lines adopted

CS 3572