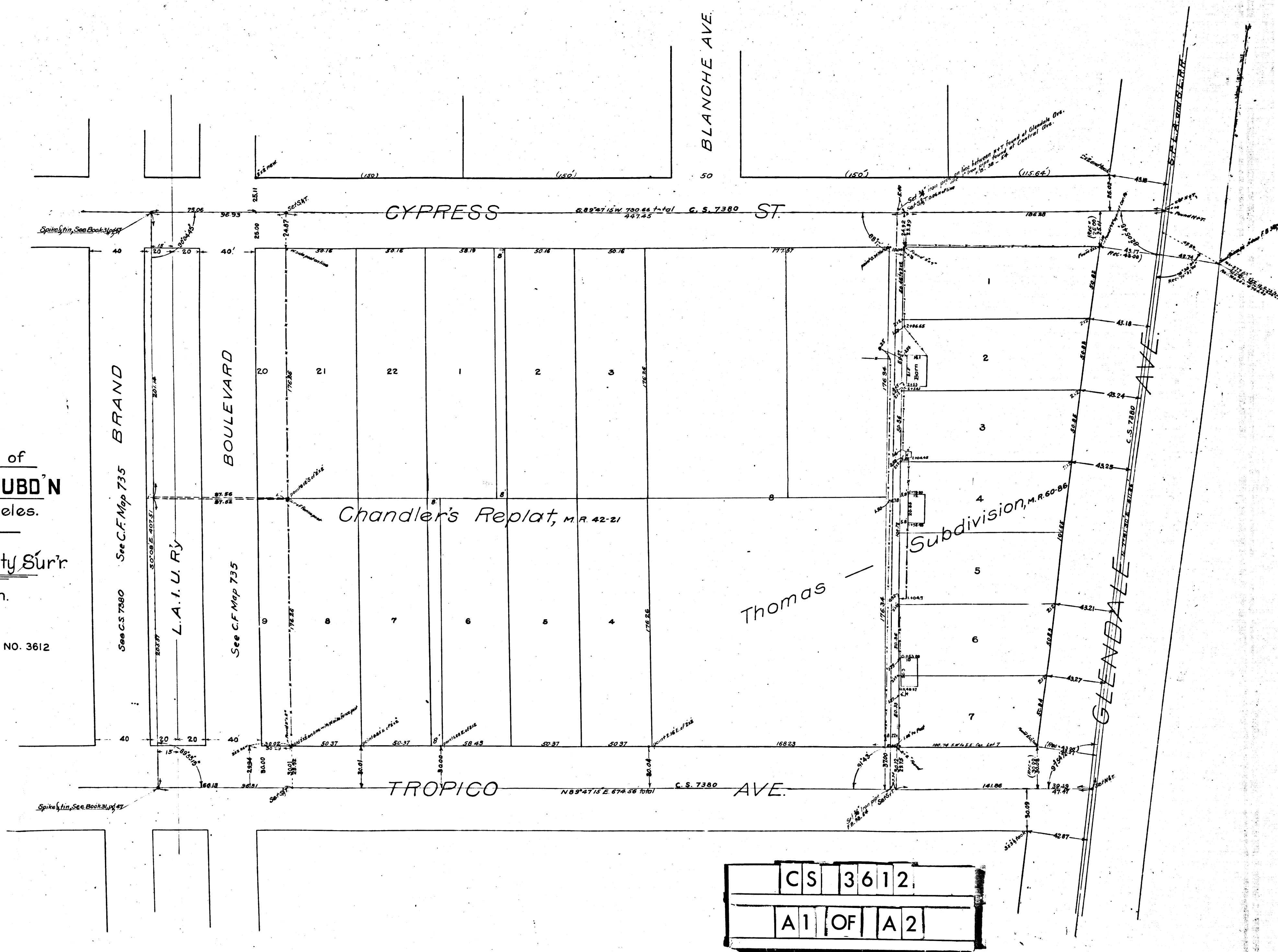


MAP
 Showing location of
ALLEY IN THOMAS SUBD'N
 M.R. 60-86
 County of Los Angeles.
 June, 1909.

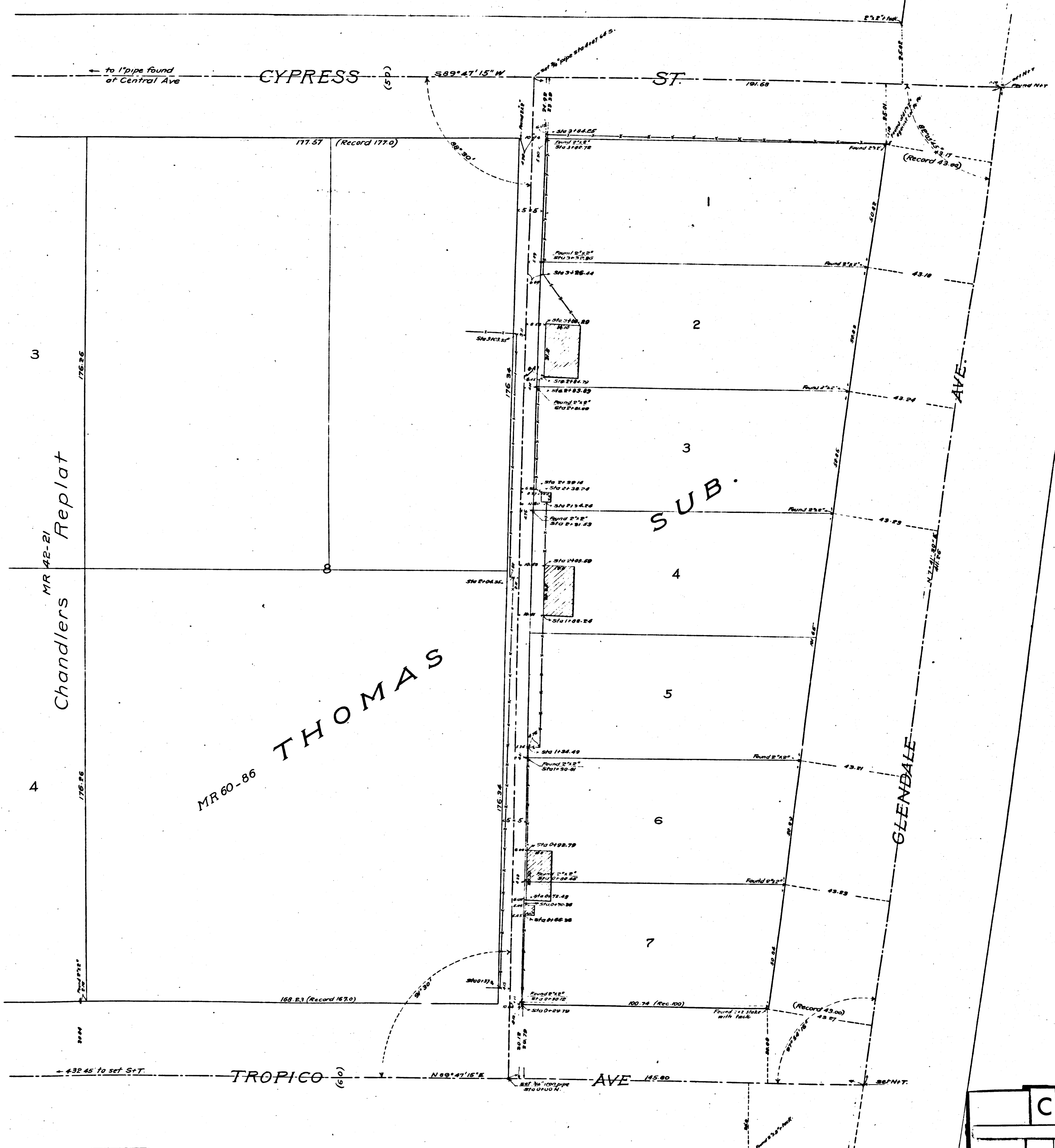
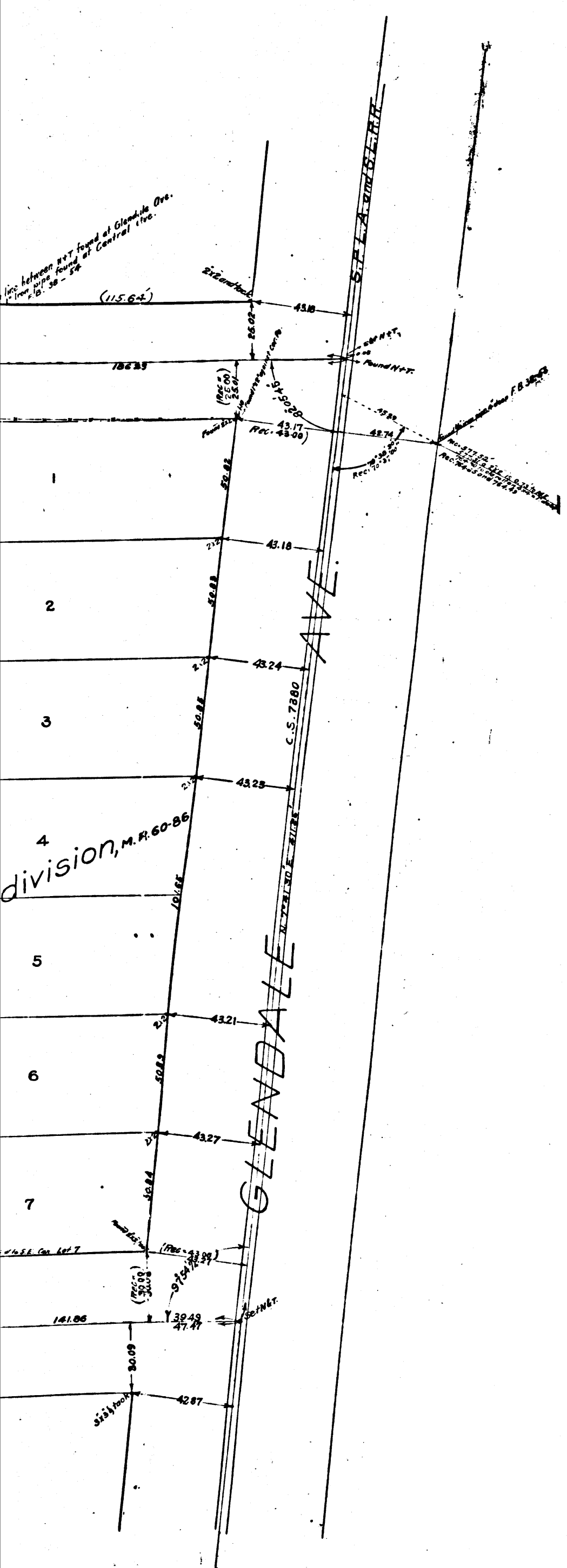
Ivory B. Noble, County Sur'r

Scale, 30ft=1inch.
 FB. 38, pg 52.

COUNTY SURVEYORS MAP NO. 3612
 I.M. 41



CS	3	6	1	2
A	1	OF	A	2



MR 42-21
Chandlers Replat

MR 60-86 THOMAS

SUB.

Scale 1"=20'

CS	3612
A2	OF A2