

# SALES TRACT

(M.R. 28-74)

SHOWING LOCATION OF STREETS

Surveyed Sept. 1912

Henry B. Noble  
Ernest S. Johnson

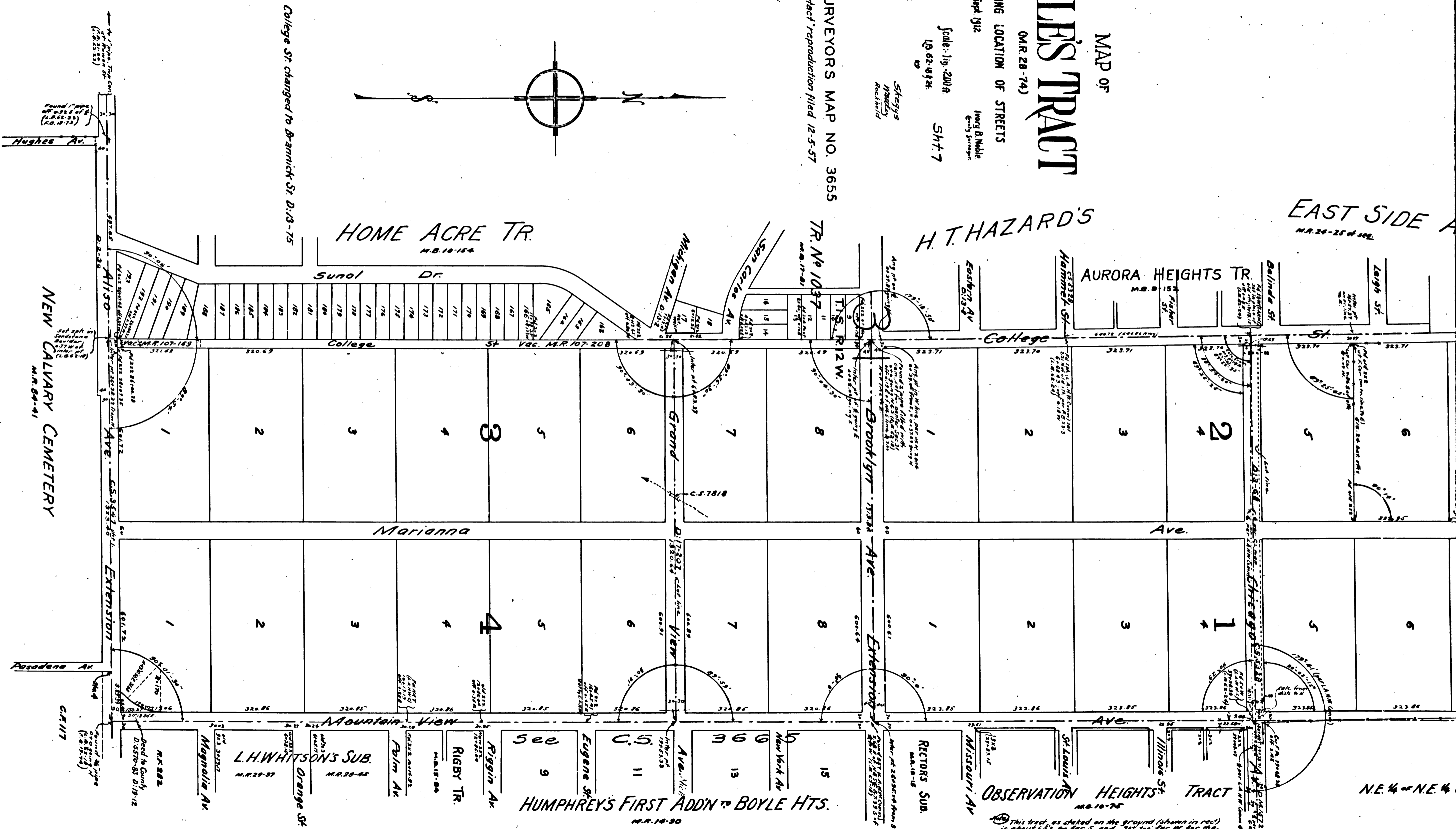
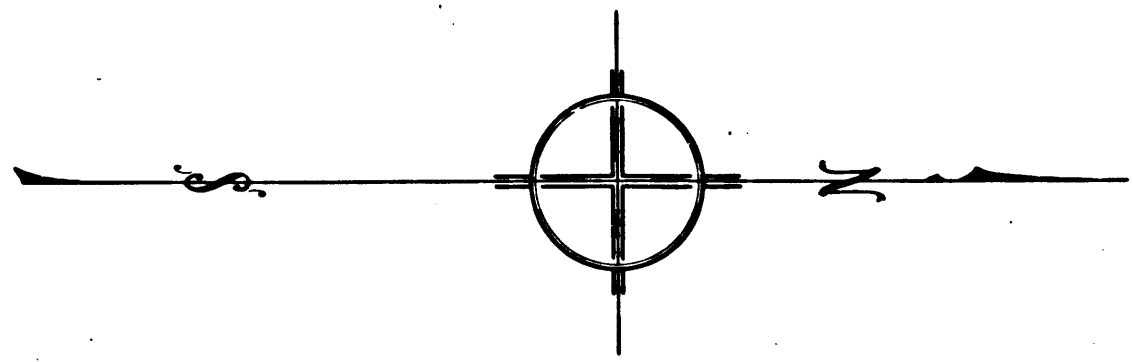
Scale: 1 in. = 200 ft.

1/8" = 25 ft.

Sheet 7

Shoys  
Noble  
Reichold

COUNTY SURVEYORS MAP NO. 3655  
This "Product" reproduction filed 12-5-57



NEW CALVARY CEMETERY  
M.R. 64-41

College St. changed to Barnick St. D:13-75

This tract, as shown on the ground (shown in red) is about 1/2" too far S, and 1/2" too far W for the correct position. (See also L.A.M. Comm. notes)

CS	3655	
A1	OF	A2

# SALES TRACT

(M.R. 28-74)

SHOWING LOCATION OF STREETS

Surveyed Sept. 1912

Wm. B. Noble  
County Surveyor

Scale: 1 in. = 200 ft.

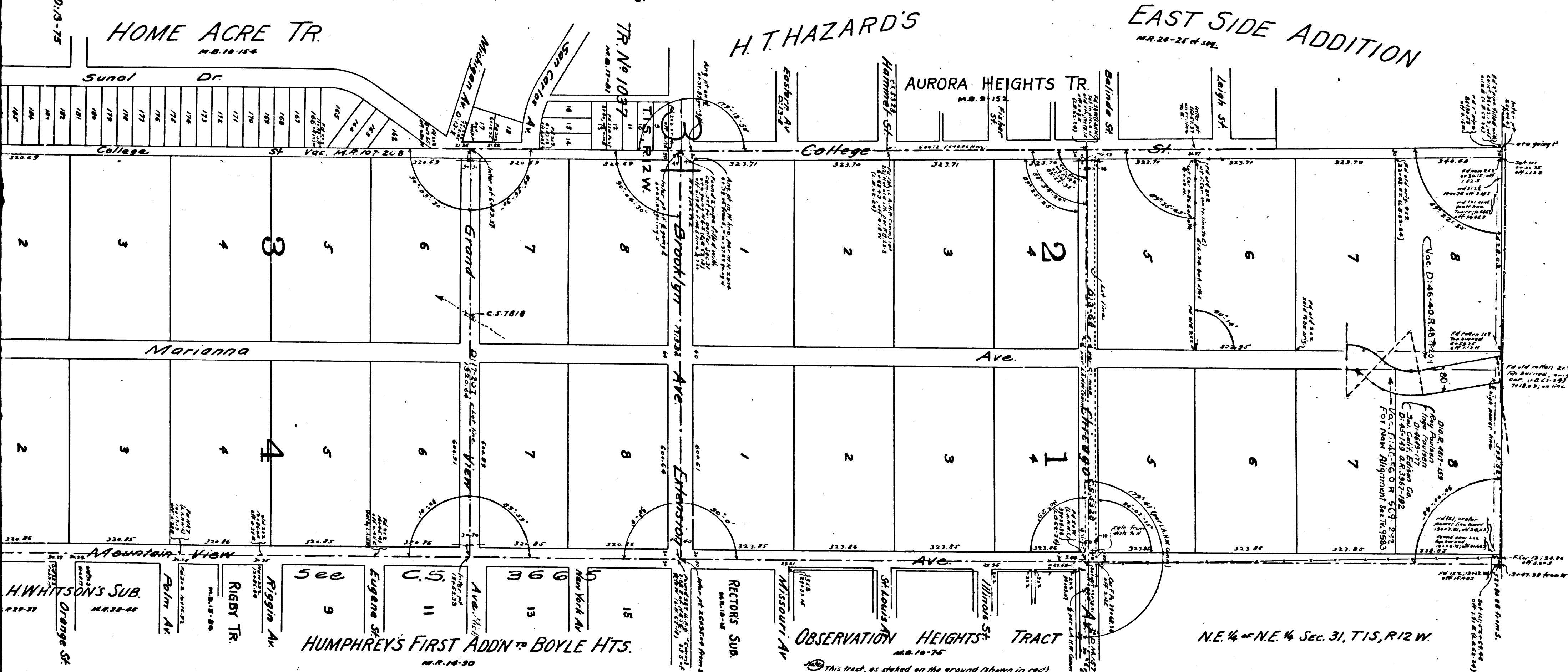
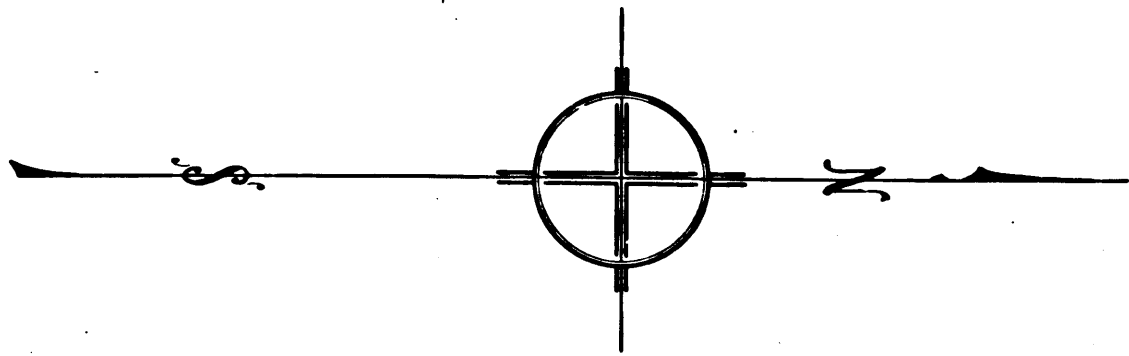
18.62-48.84

SH 7-7

Shelby's  
Maples  
Reelwood

COUNTY SURVEYORS MAP NO. 3655

This "Photocopy" reproduction filed 12-5-57



This tract, as staked on the ground (shown in red) is about 6.5% too far S, and 7.2% too far W for the correct position. (See also L.A.N.W. Comm. notes)

CS	3655	
A2	OF	A2

College St. changed to Brannick St. D:3-75

HOME ACRE TR.  
M.B. 10-154

H. T. HAZARD'S

EAST SIDE ADDITION  
M.R. 24-25 of 349

AURORA HEIGHTS TR.  
M.B. 9-152

OBSERVATION HEIGHTS TRACT  
M.B. 10-76

HUMPHREY'S FIRST ADDN TO BOYLE HTS.  
M.R. 14-30

N.E. 1/4 of N.E. 1/4 Sec. 31, T15, R12 W.