

SUNSET BOULEVARD

FROM WESTERN AVE. 3 MILES WEST
 AS SURVEYED UNDER INSTRUCTION FROM HON. BOARD OF SUPERV.
 MARCH 1896 E.T. WRIGHT CO. SUR. BY W.B. NICHOLSON DEPUTY
 SCALE: HORIZONTAL 1" = 500'; LONGITUDINAL 1" = 100'
 ROAD 100 FT. WIDE

N.B. 4-75-77
 See Deed 1126-176 D:2-181
 D:3-133

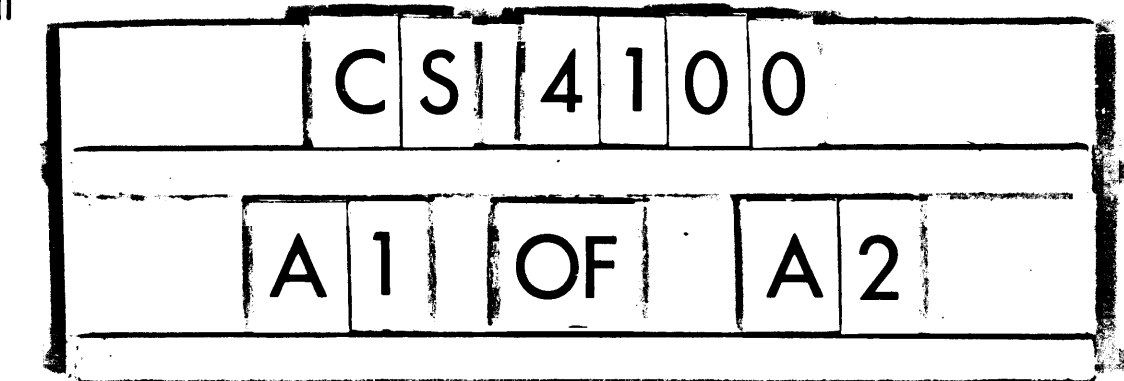
I.M. 40

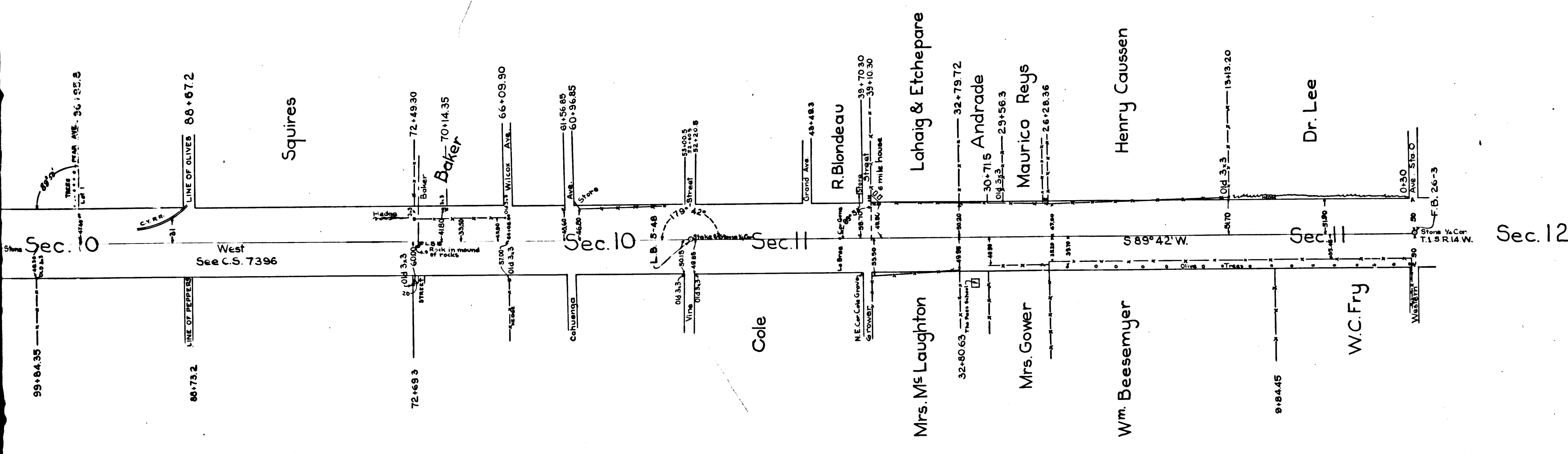
COUNTY SURVEYORS MAP NO. 4100

(Formerly C. S. Map No. 1000)

Retraced from the cloth-mounted eggshell original map which has been discarded.

Traced by T. Kardos, Aug. 1957
 Checked by R.J.B.





SUNSET BOULEVARD

FROM WESTERN AVE. 3 MILES WEST
 AS SURVEYED UNDER INSTRUCTION FROM HON. BOARD OF SUPERVISORS
 MARCH 1896 E.T. WRIGHT CO. SUR. BY W.B. NICHOLSON DEPUTY
 SCALE: HORIZONTAL 1" = 500'; LONGITUDINAL 1" = 100'
 ROAD 100 FT. WIDE
 N.B. 4-75-77

See Deed 1126-176 D: 2-181
 D: 3-133

I. M. 40

COUNTY SURVEYORS MAP NO. 4100
 (Formerly C. S. Map No. 1000)

Retraced from the cloth-mounted eggshell original map which has been discarded.

Traced by T. Kardos, Aug. 1957
 Checked by R.J.B.

C	S	4	1	0	0
A	2	OF	A	2	