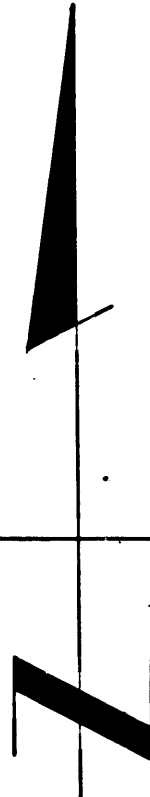


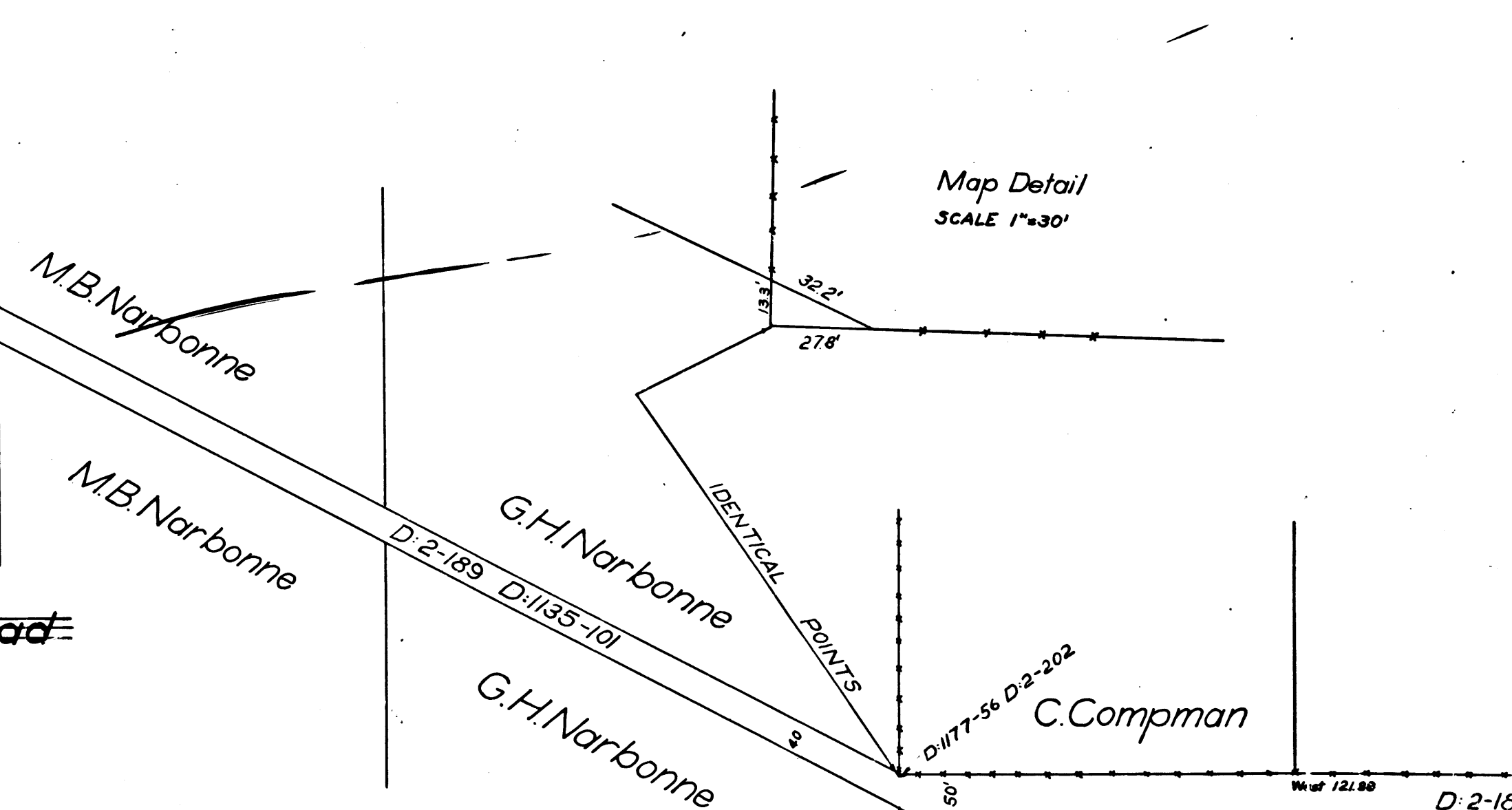
Lot 28 Meadow Park Tract
SCALE: 5 Chs to 1 in.

Retraced from the cloth map original map which has been
Traced by T. Kardos - Aug.
Checked by R.J.B.



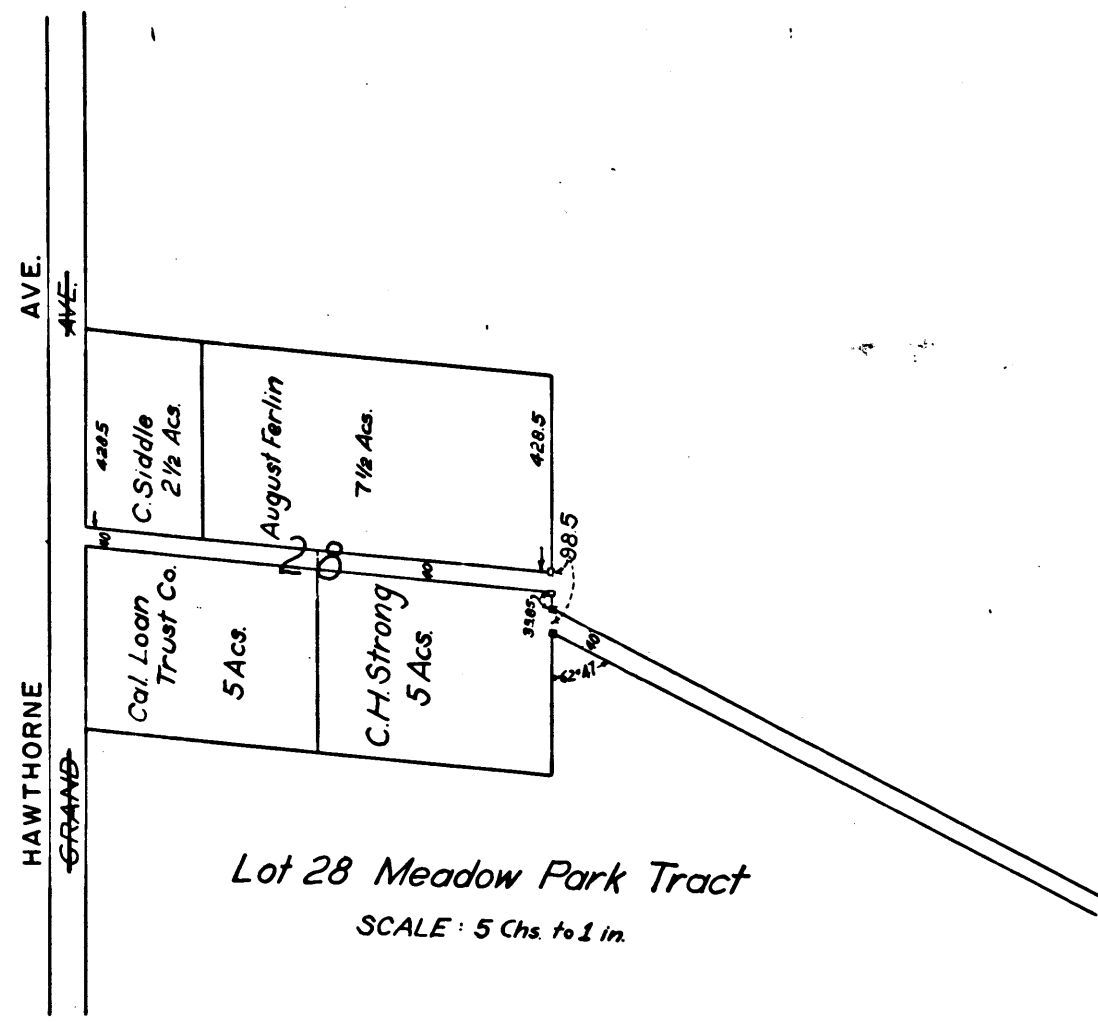
LOMITA BLVD.
~~Wilmington & Salt Works Road~~

As surveyed under instructions from
The Hon. Board of Supervisors
in April 1896 by E. T. Wright Co. Sur.
SCALE: width of road 12 chs - 1" - other 10 chs - 1"
N.B. 3-72; 8-75
COUNTY SURVEYORS MAP NO. 4102
(Formerly C.S. Map No. 1002)
INDEX 27, 28
D-1 B-3



Map Detail
SCALE 1" = 30'

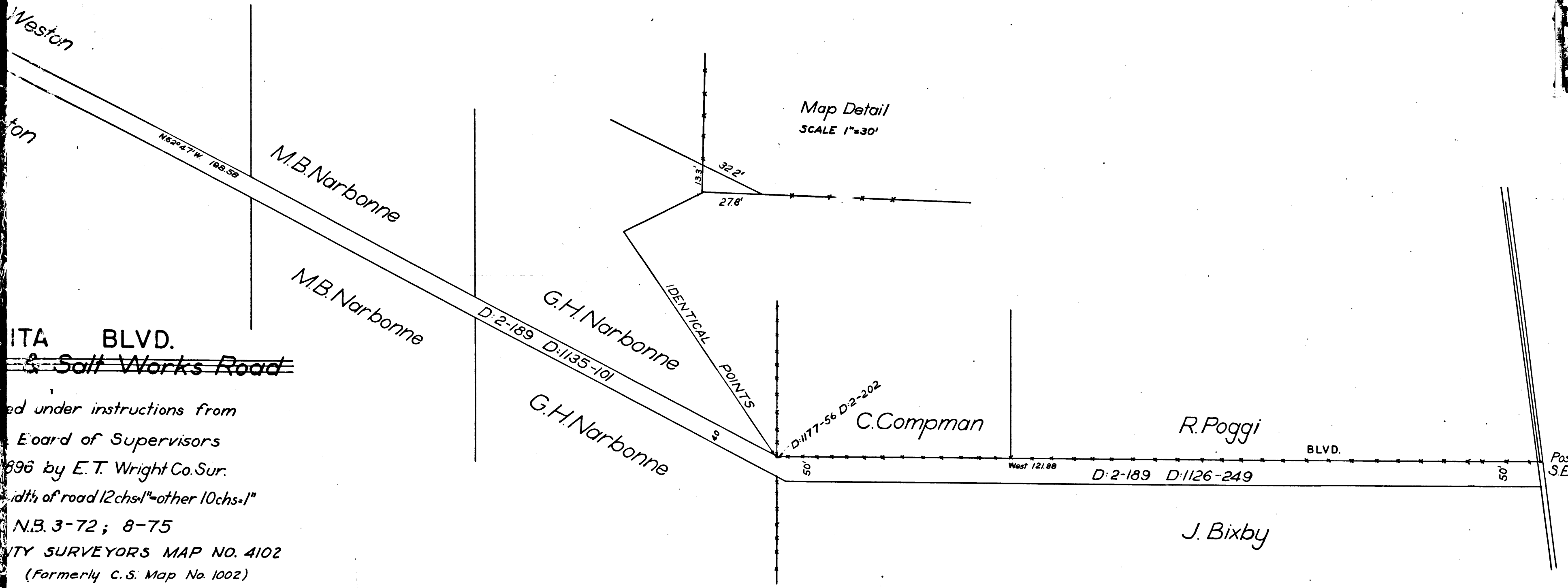
C	S	4	1	0	2
A	1	OF	A	2	



Lot 28 Meadow Park Tract
SCALE: 5 Chs. to 1 in.

Retraced from the cloth-mounted eggshell original map which has been discarded.
Traced by T. Kardos - Aug., 1957
Checked by R.J.B.

	CS	4	1	0	2
	A	2	OF	A	2



Map Detail
SCALE 1"=30'

ITA BLVD.
& Salt Works Road

ed under instructions from
Board of Supervisors
1896 by E. T. Wright Co. Sur.
width of road 12chs-1"-other 10chs-1"
N.B. 3-72; 8-75
COUNTY SURVEYORS MAP NO. 4102
(Formerly C.S. Map No. 1002)

INDEX 27, 28
D-1 B-3

Post in center of road
S.E. Cor. Lot G, Palos Verdes R.