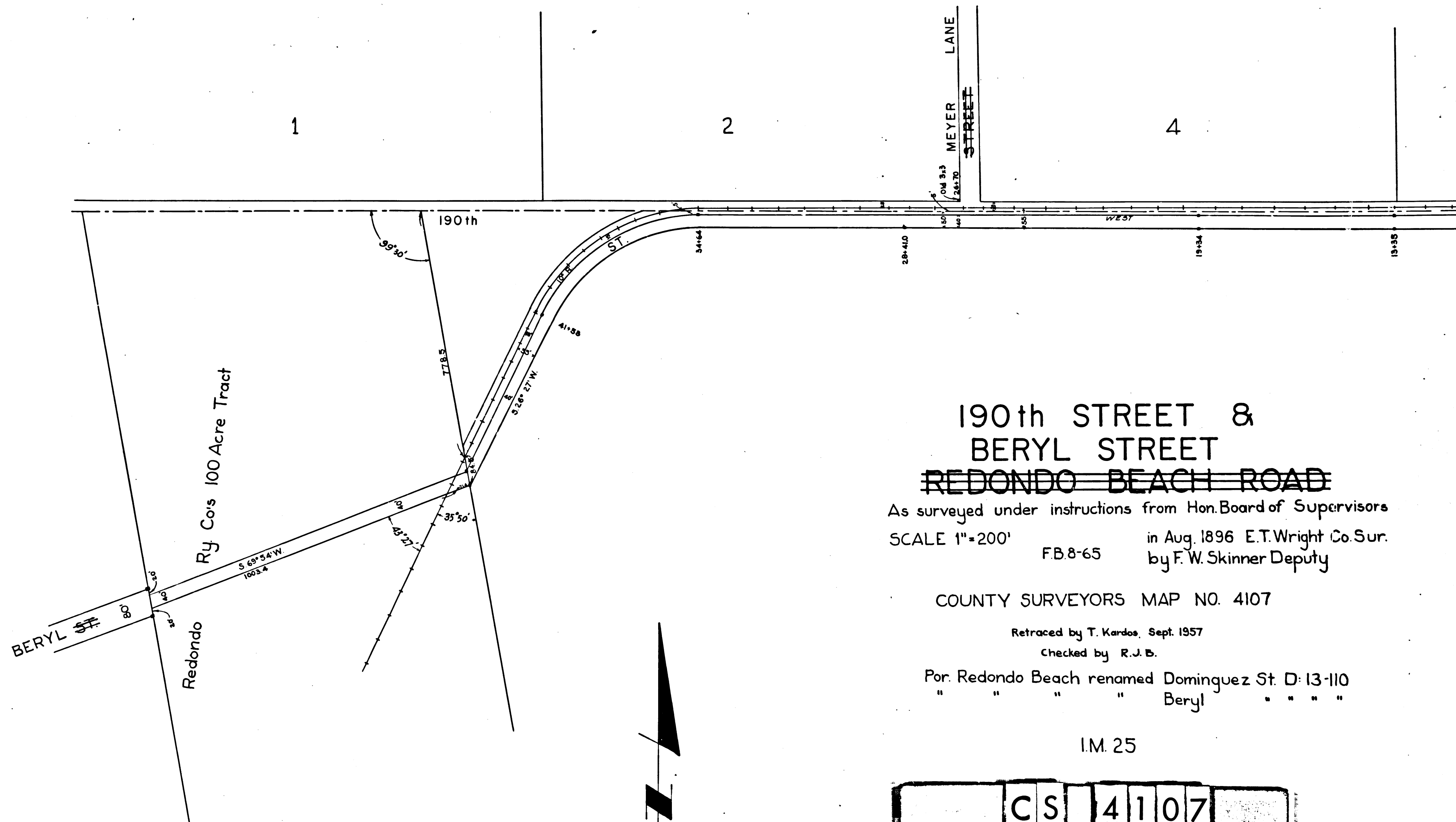


M^{rs}. Donald Tract



Redondo Townsite

Ry Co's 100 Acre Tract

Redondo

MEYER LANE
STREET

190th STREET &
BERYL STREET
~~REDONDO BEACH ROAD~~

As surveyed under instructions from Hon. Board of Supervisors
SCALE 1"=200' in Aug. 1896 E.T. Wright Co. Sur.
FB.8-65 by F. W. Skinner Deputy

COUNTY SURVEYORS MAP NO. 4107

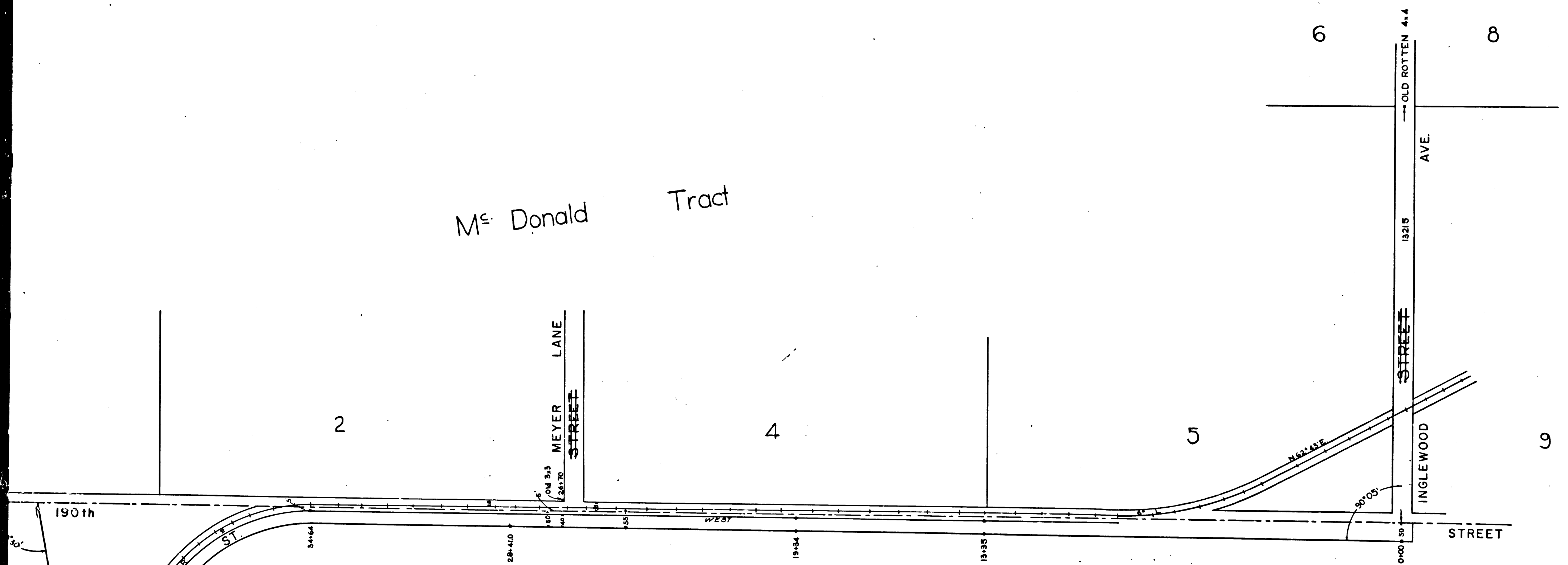
Retraced by T. Kardos, Sept. 1957
Checked by R.J.B.

Por. Redondo Beach renamed Dominguez St. D: 13-110
" " " " Beryl " " " "

I.M. 25

	CS	4107	
	A1	OF	A2

M^c Donald Tract



190th STREET &
 BERYL STREET
~~REDONDO BEACH ROAD~~

As surveyed under instructions from Hon. Board of Supervisors
 SCALE 1"=200' in Aug. 1896 E.T. Wright Co. Sur.
 F.B. 8-65 by F. W. Skinner Deputy

COUNTY SURVEYORS MAP NO. 4107

Retraced by T. Kardos, Sept. 1957
 Checked by R. J. B.

Por. Redondo Beach renamed Dominguez St. D: 13-110
 " " " " Beryl " " " "

I.M. 25

	C	S	4	1	0	7	
	A	2	OF	A	2		