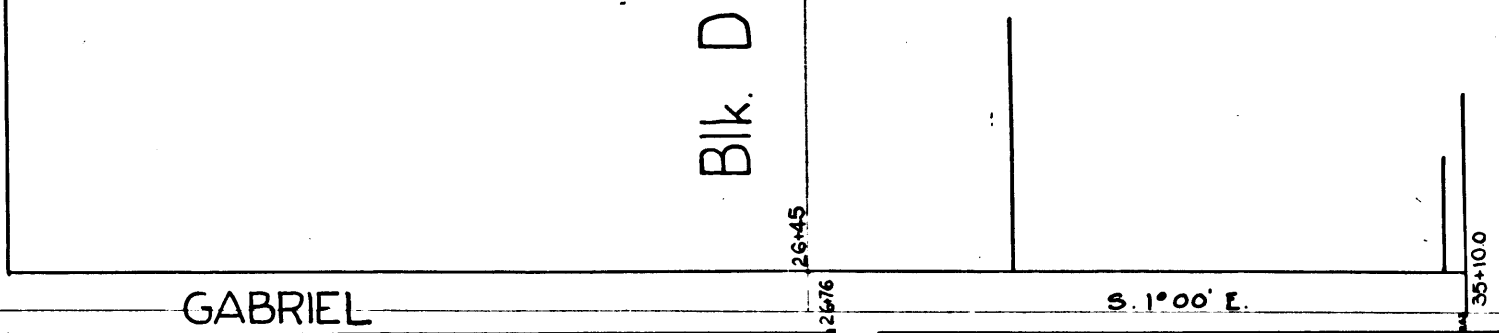
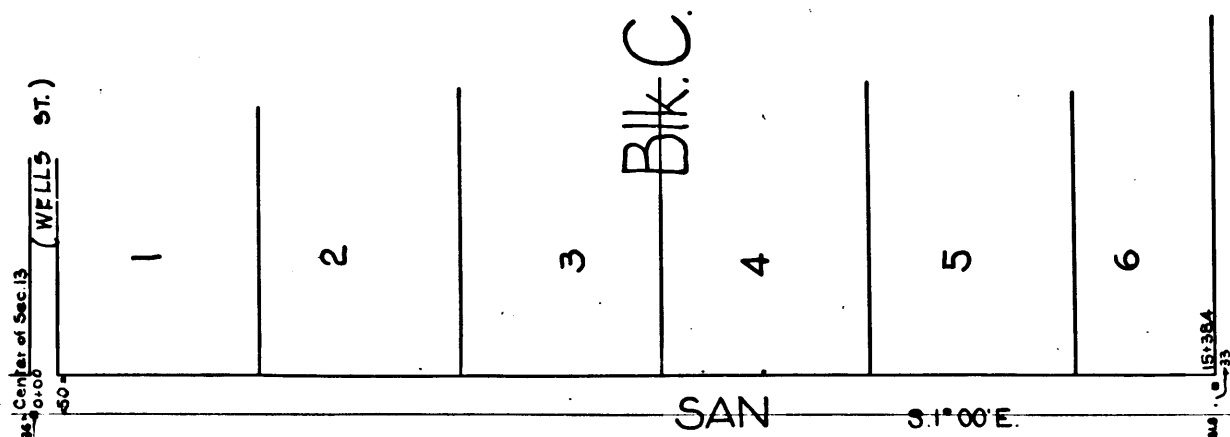


Portion of the Freer Tract
M.R. 39-82



Portion of San Gabriel Improvements Co. Lands
M.R. 54-71-72

J.F. Turner

←
FREEWAY

BERNARDINO

(now HELLMAN AVE.)

61

BOU

68

Map No. 108 of Sec. 13 (WELLS ST.)

1702

2656.4
3.3 Stake & Stone

31.3

SAN 31°00' E.

GABRIEL

31°00' E.

(now VALLEY BLVD.) El Monte Ave.

(DEL MAR

AVE.)

Iron Pipe 1975

FLOYD AVE.

2676.7

Stone M.C. Def. Secs. 23 & 24

Plat Showing SAN GABRIEL BLVD.

Through Sections 13 & 24 T.1S.R.12W.

As title is now vested in Los Angeles County, as shown on record maps

Surveyed under instructions from Hon. Board of Supervisors

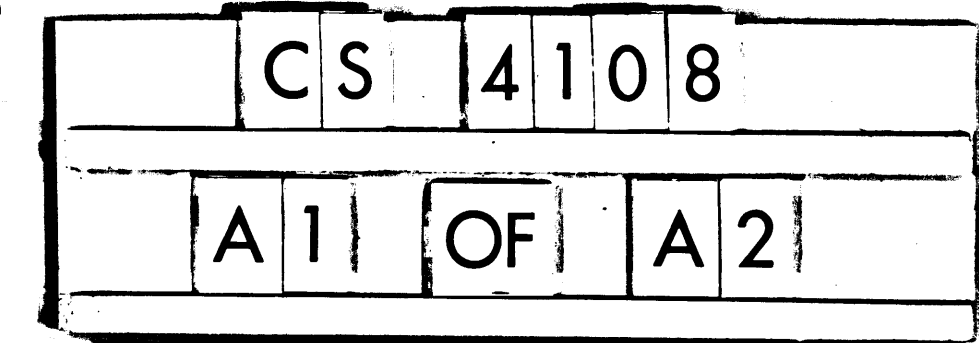
In Aug 1896 E.T. Wright Co. Sur. By F.W. Skinner Deputy

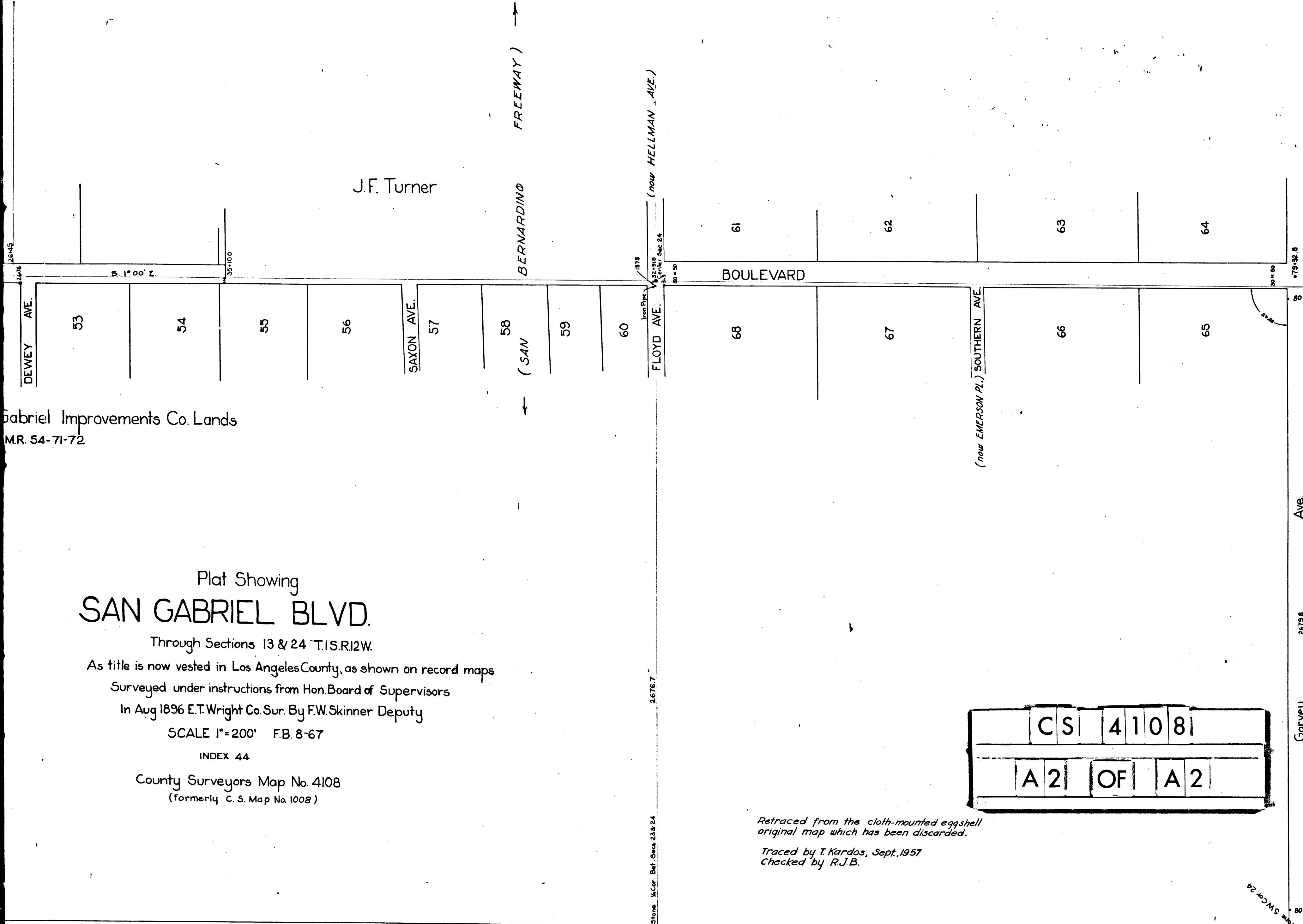
SCALE 1"=200' F.B. 8-67

INDEX 44

County Surveyors Map No. 4108

(Formerly C. S. Map No. 1008)





Gabriel Improvements Co. Lands
M.R. 54-71-72

Plat Showing
SAN GABRIEL BLVD.

Through Sections 13 & 24 T.1S.R.12W.
As title is now vested in Los Angeles County, as shown on record maps
Surveyed under instructions from Hon. Board of Supervisors
In Aug 1896 E.T. Wright Co. Sur. By F.W. Skinner Deputy
SCALE 1"=200' F.B. 8-67

INDEX 44
County Surveyors Map No. 4108
(Formerly C. S. Map No. 1008)

C	S	4	1	0	8
A	2	OF	A	2	

Retraced from the cloth-mounted eggshell original map which has been discarded.
Traced by T. Kardos, Sept., 1957
Checked by R.J.B.

(DEL MAR AVE.)