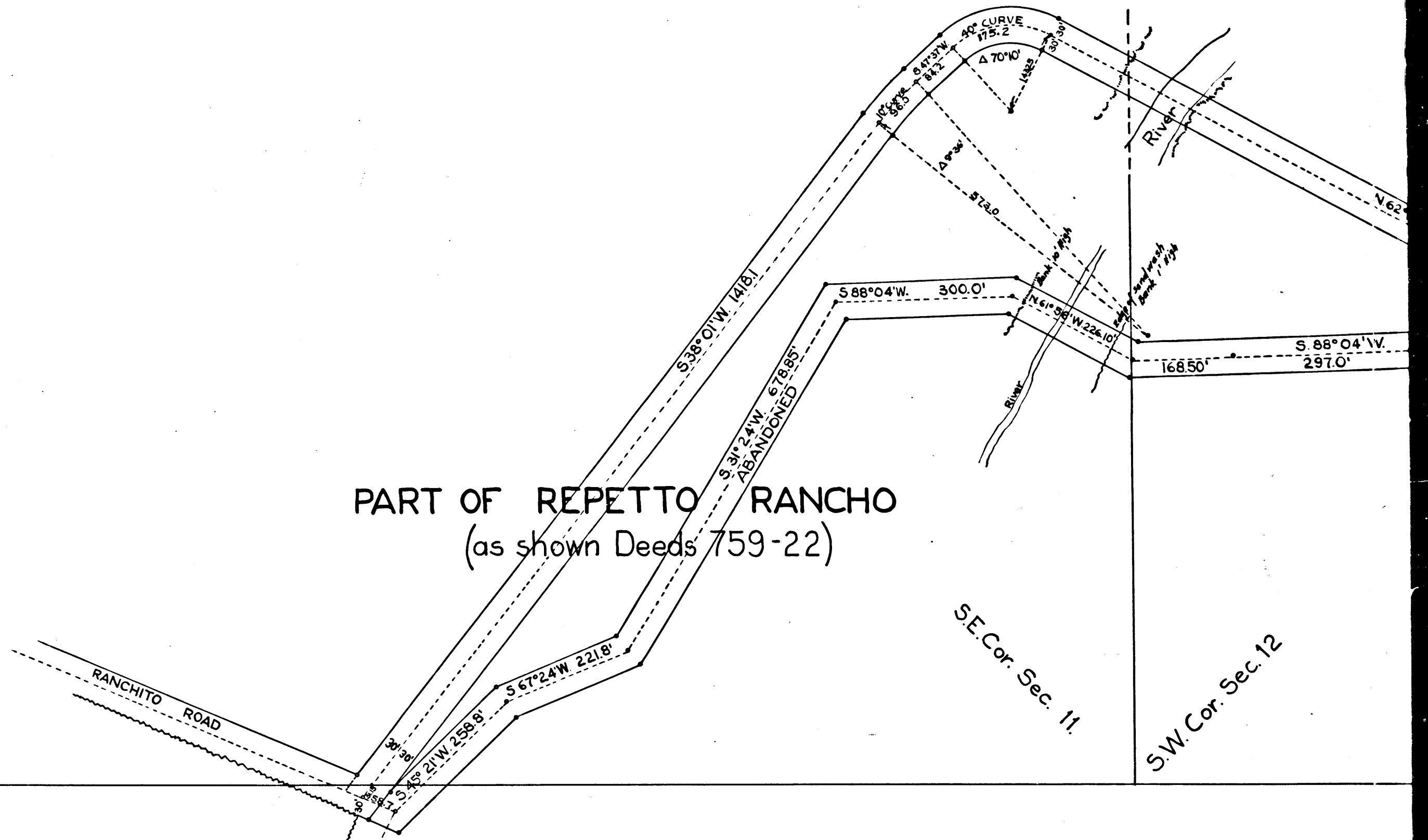


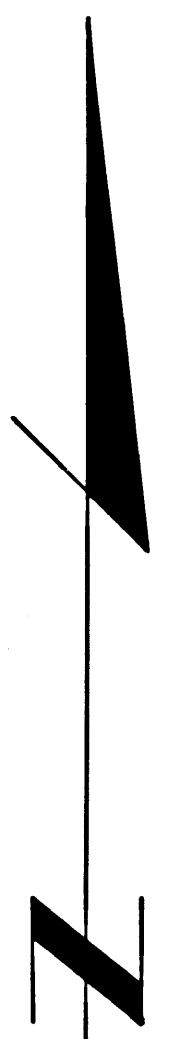
SEC. 11  
T. 2 S. R. 12 W.

PART OF REPETTO RANCHO  
(as shown Deeds 759-22)



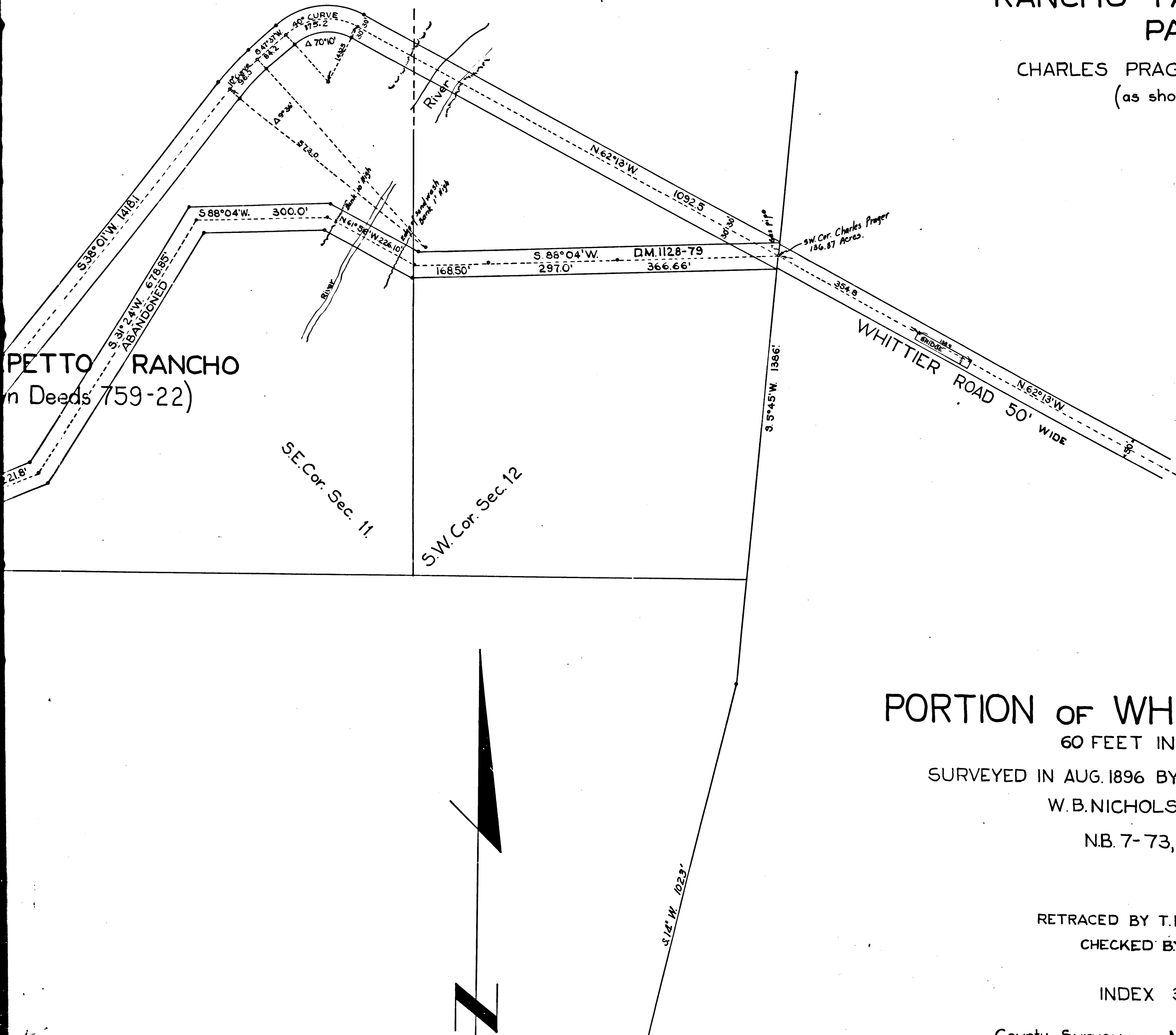
LAGUNA

CS	4	1	0	9
A	1	OF	B	2



# RANCHO PASO DE BAROLO PARTITION

CHARLES PRAGER 136.87 ACRES  
(as shown Deeds 999-82)



CS	4	1	0	9
A	2	OF	B	2

## PORTION OF WHITTIER ROAD

60 FEET IN WIDTH

SURVEYED IN AUG. 1896 BY E. T. WRIGHT CO. SUR.  
W. B. NICHOLSON DEP.  
NB. 7-73, 10-47

RETRACED BY T. KARDOS, SEPT. 1957  
CHECKED BY R. J. B.

INDEX 36

PART OF REPETTO RANCHO  
(as shown Deeds 759-22)

SE. Cor. Sec. 11

LAGUNA RANCHO

RANCHITO ROAD

CS	4109	
B1	OF	B2

STONE MONUMENT

N 54° W. 821.04'

S 71° 15' W. 1806.42'

S 26° 36' W. 1451.41'

S 51° 21' W. 258.8'

S 67° 24' W. 221.8'

S 31° 24' W. 678.95'

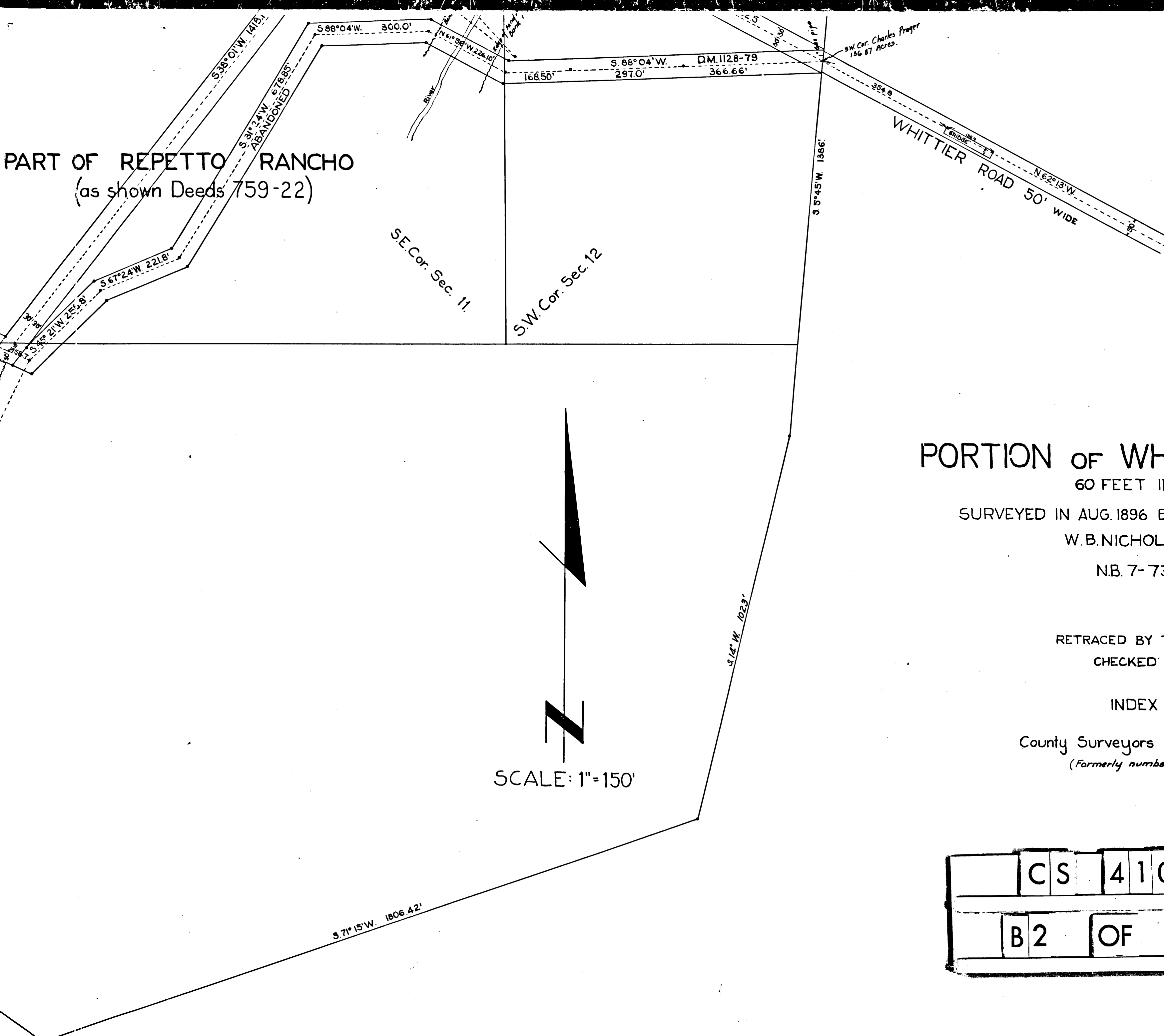
S 38° 0' W. 1418.1'

S 88° 04' W. 300.0'

SCALE

S.W.

PART OF REPETTO RANCHO  
(as shown Deeds 759-22)



# PORTION OF WHITTIER ROAD

60 FEET IN WIDTH

SURVEYED IN AUG. 1896 BY E.T. WRIGHT CO. SUR.

W.B. NICHOLSON DEP.

N.B. 7-73, 10-47

RETRACED BY T. KARDOS, SEPT. 1957

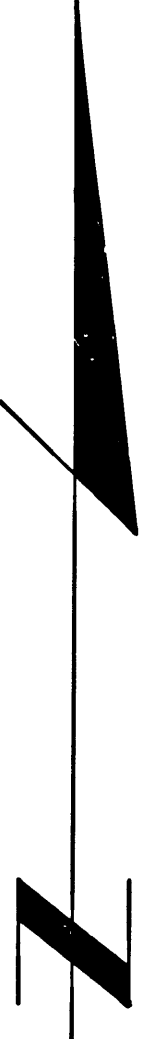
CHECKED BY R.J. B.

INDEX 36

County Surveyors Map No. 4109

(Formerly numbered C.S. Map No. 1009)

SCALE: 1" = 150'



	C	S	4	1	0	9
	B	2	OF	B	2	