

C	S	4	1	1	1
A	1	O	F	A	2

Map of  
County Roads  
in the  
*Rancho Rodeo de las Aguas*

surveyed by order of  
The Hon. Board of Supervisors  
by E.T. Wright Co. Sur.

Scale, 8 Chs to 1 inch  
Note Book 5, Page 77

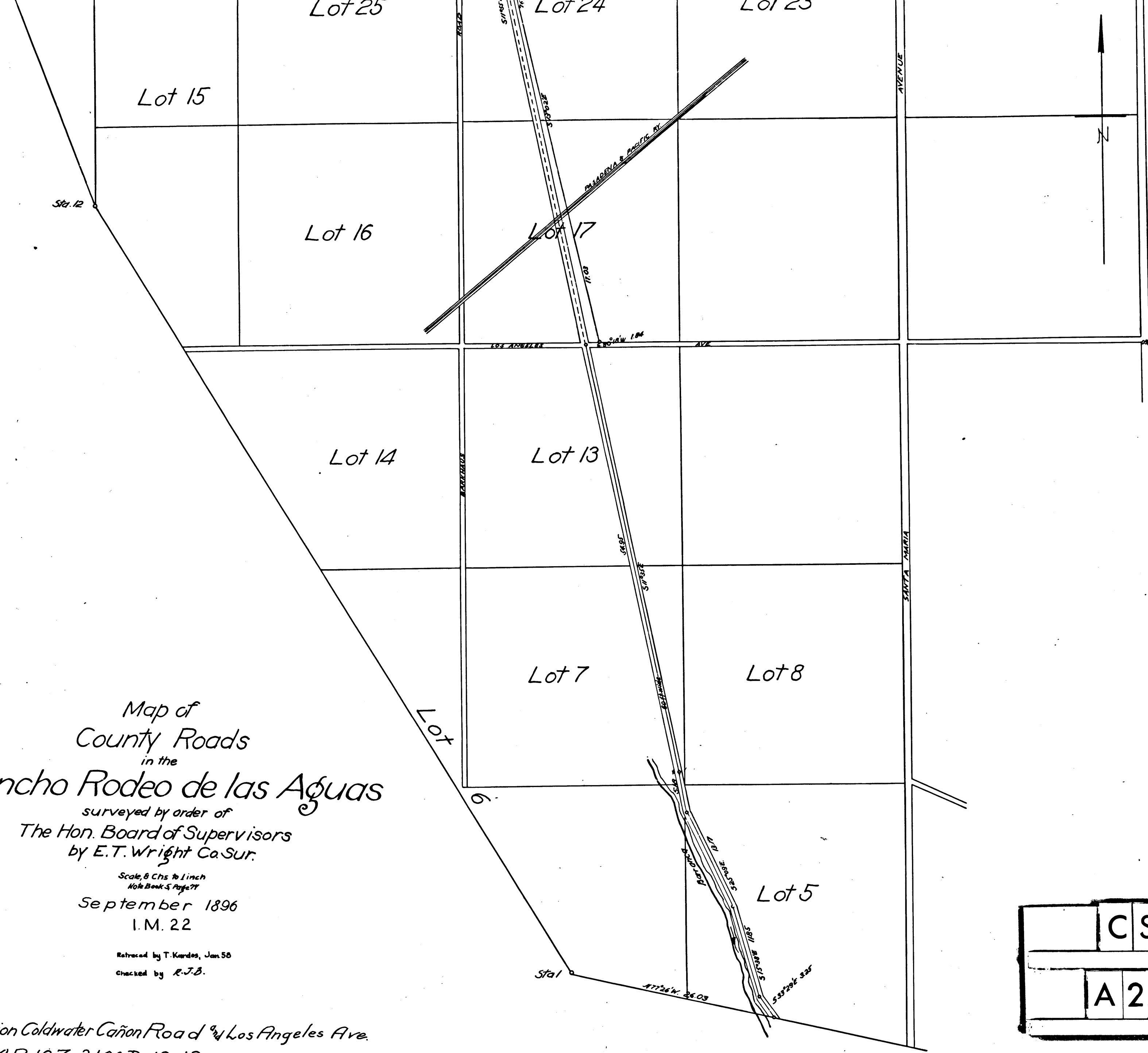
September 1896  
I.M. 22

Retraced by T. Kardos, Jan. 56  
checked by R.J.B.

For Vacation Coldwater Cañon Road  $\frac{1}{4}$  Los Angeles Ave.  
See MR 107-210 & D: 12-13

Note: The order vacating Coldwater Cañon  
Road north from Sta. 2. was rescinded by the  
Board of Supervisors Apr. 7, 1913 See R.B. 14-121 D: 12-163  
for final vacation See R.B. 4-359 D: 12-175

COUNTY SURVEYORS MAP NO. 4111



CS	4	1	1	1
A	2	OF	A	2