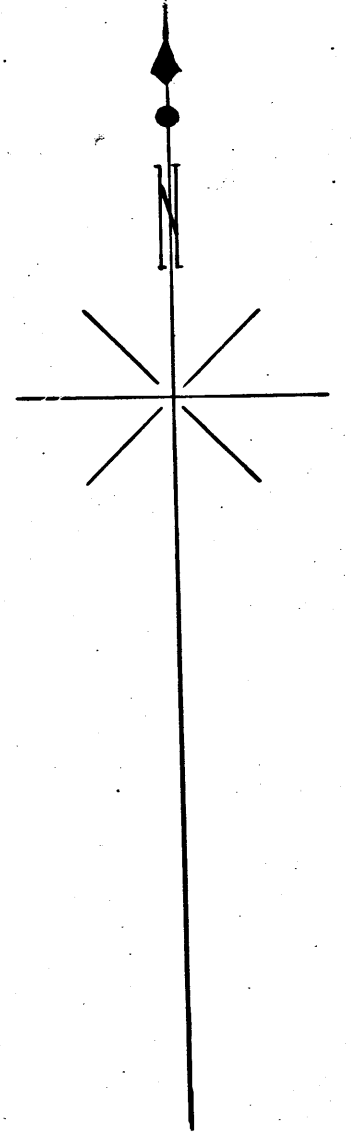
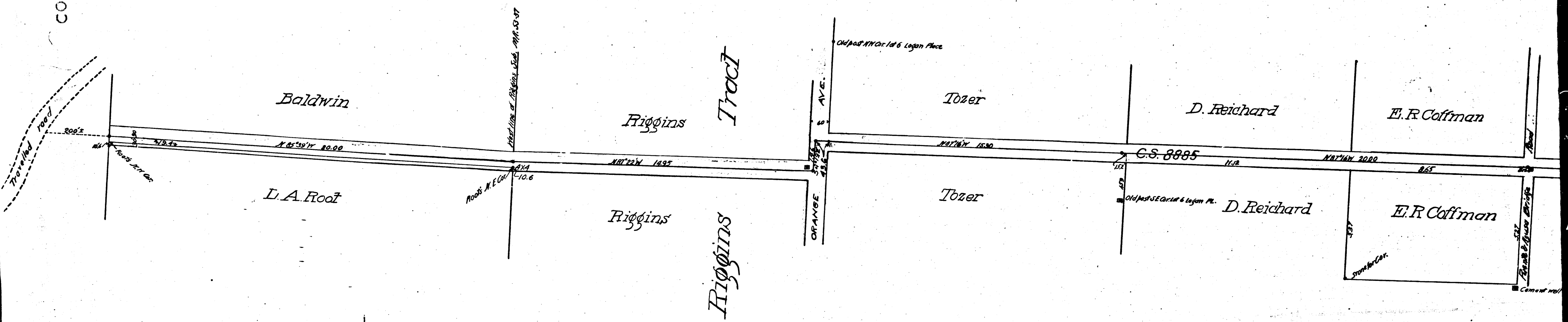
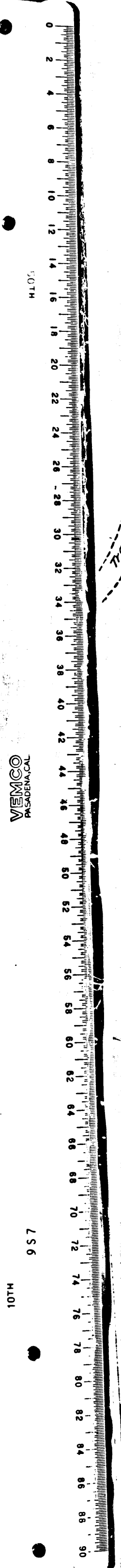


COUNTY SURVEYORS MAP NO.

COUNTY SURVEYORS MAP NO.



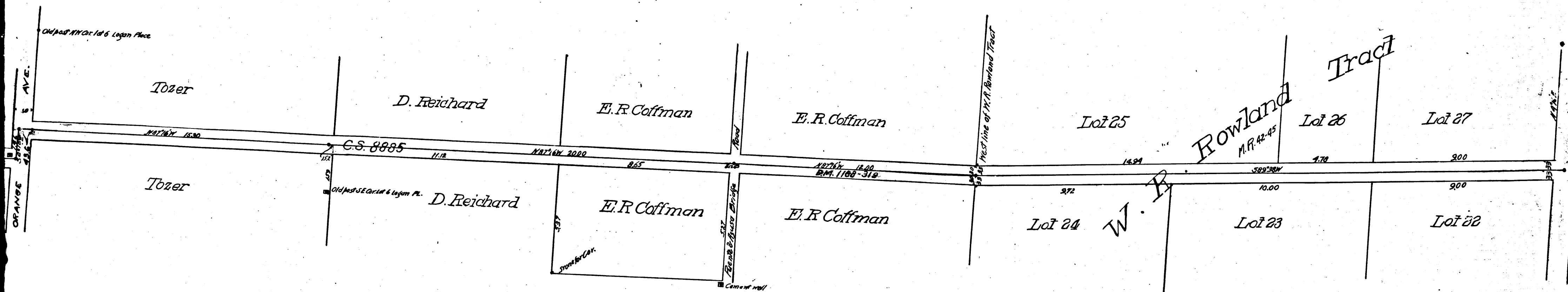
Puente Avenue Extension in Rancho La Puente

Surveyed by order of the Hon. Board of Supervisors
by E.T. Wright Co. Sur.

Oct. 1896
Scale 3 Chs. 1 in.
Note Book II Page 49
Copy of C.S. 1016

| | | | | |
|----|---|----|---|---|
| CS | 4 | 1 | 1 | 6 |
| A | 1 | OF | A | 2 |

INDEX No. 47



Puente Avenue Extension in Rancho La Puente

Surveyed by order of the Hon. Board of Supervisors
by E. T. Wright Co. Sur.

Oct. 1896
Scale 5 Chs. = 1 in.
Note Book 11 Page 49
Copy of C.S. 1016

INDEX No 47

| | | | | |
|----|---|----|---|---|
| CS | 4 | 1 | 1 | 6 |
| A | 2 | OF | A | 2 |

AM 2 P O Y E V A U S Y I U U O C

COUNTY SURVEYOR'S MAP NO. 2

VEMCO
RESURVEYAL