

Cahuenga Pass Road

FROM SUMMIT OF PASS SOUTHERLY

Surveyed under instruction of Hon. Board of Supervisors

E.T. WRIGHT CO. SUR. W.B. NICHOLSON DEPUTY
AUGUST 1896 and JANUARY 1897

Scale: 1 in. = 200'

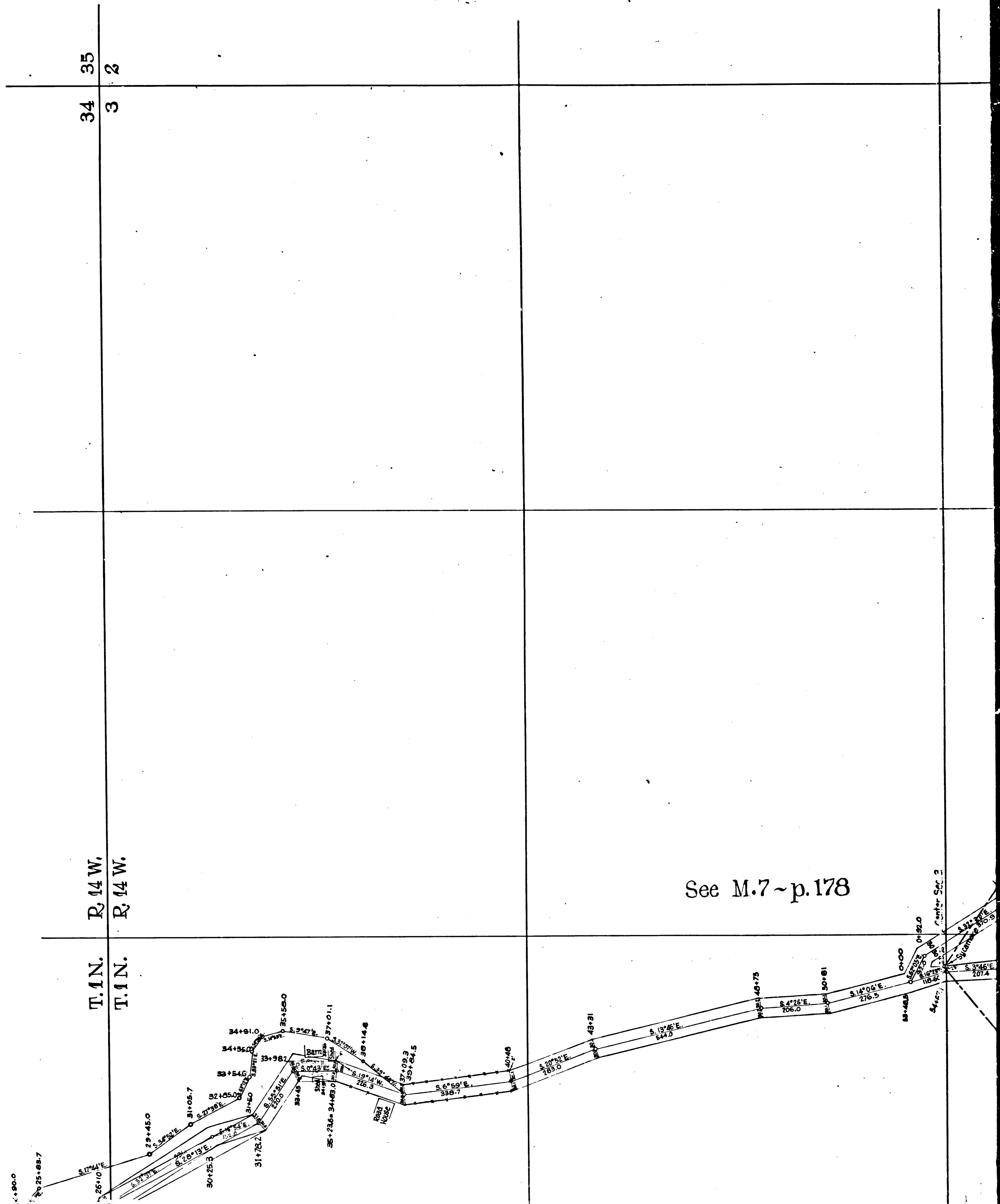
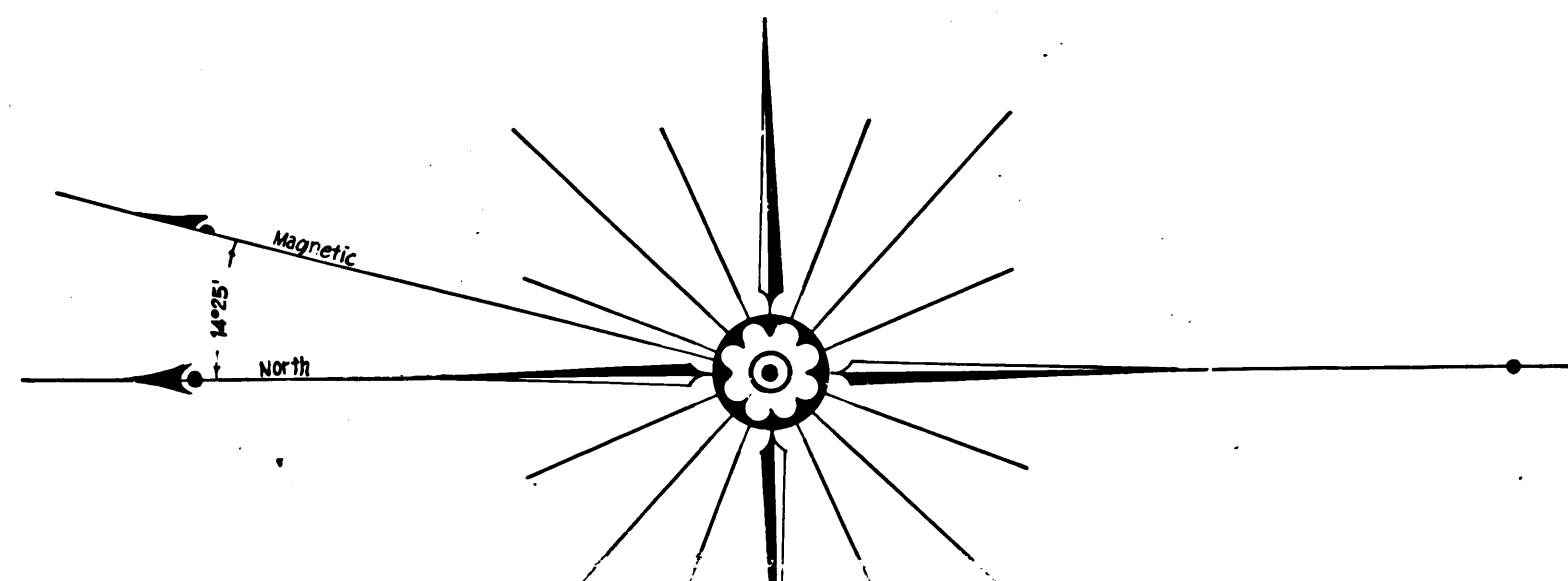
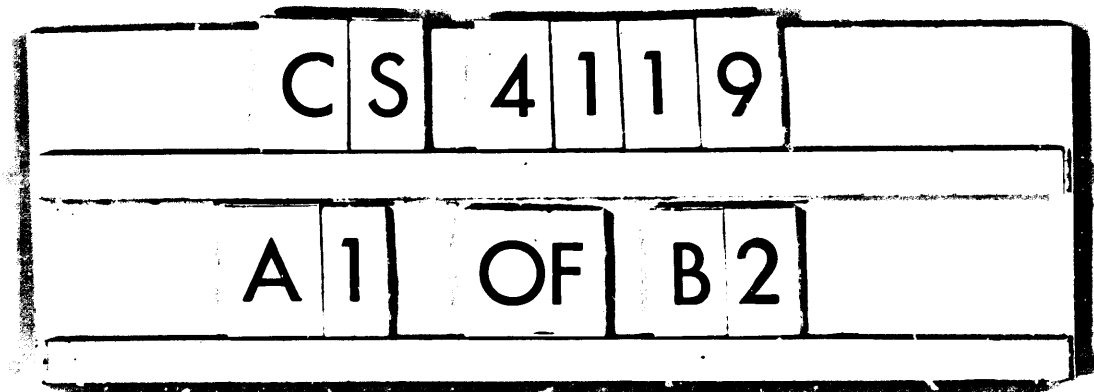
Road 60' wide
FIELD BOOK 10 and 16

COUNTY SURVEYOR'S MAP NO. 4119
Formerly County Surveyor's Map No. 1019

I.M. 40

Retraced from the cloth mounted egg-shell
original map which has been discarded.

Traced by, Frank Woo, April 1958
Checked by, _____



See M.7 ~ p.178

CS	4	1	1	9
A	2	OF	B	2

Rancho

La Brea.

HOLLYWOOD

Marginal Map
NO SCALE

North Line of Hollywood

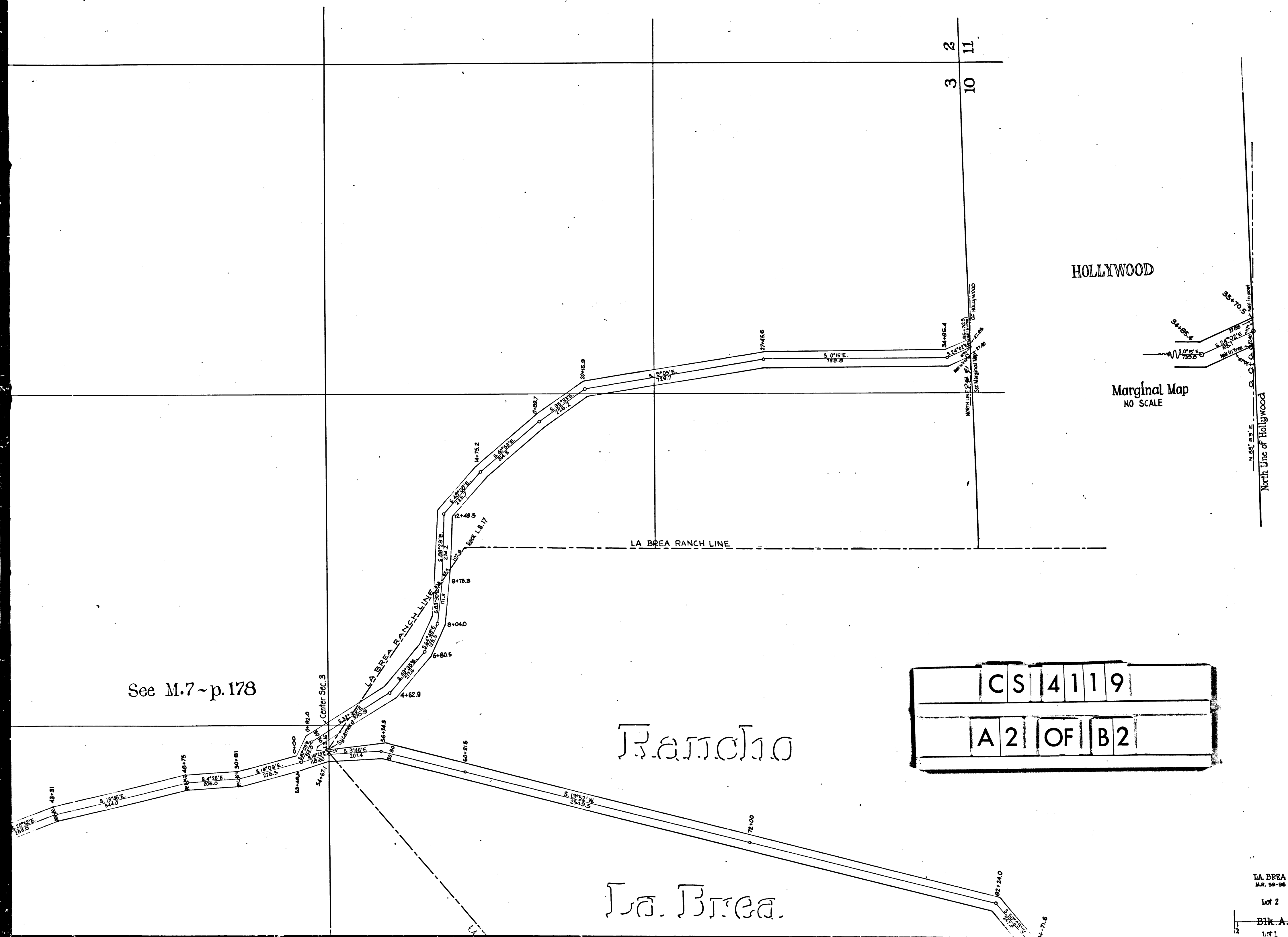
LA BREA
M.R. 50-96

Lot 2

Blk. A.

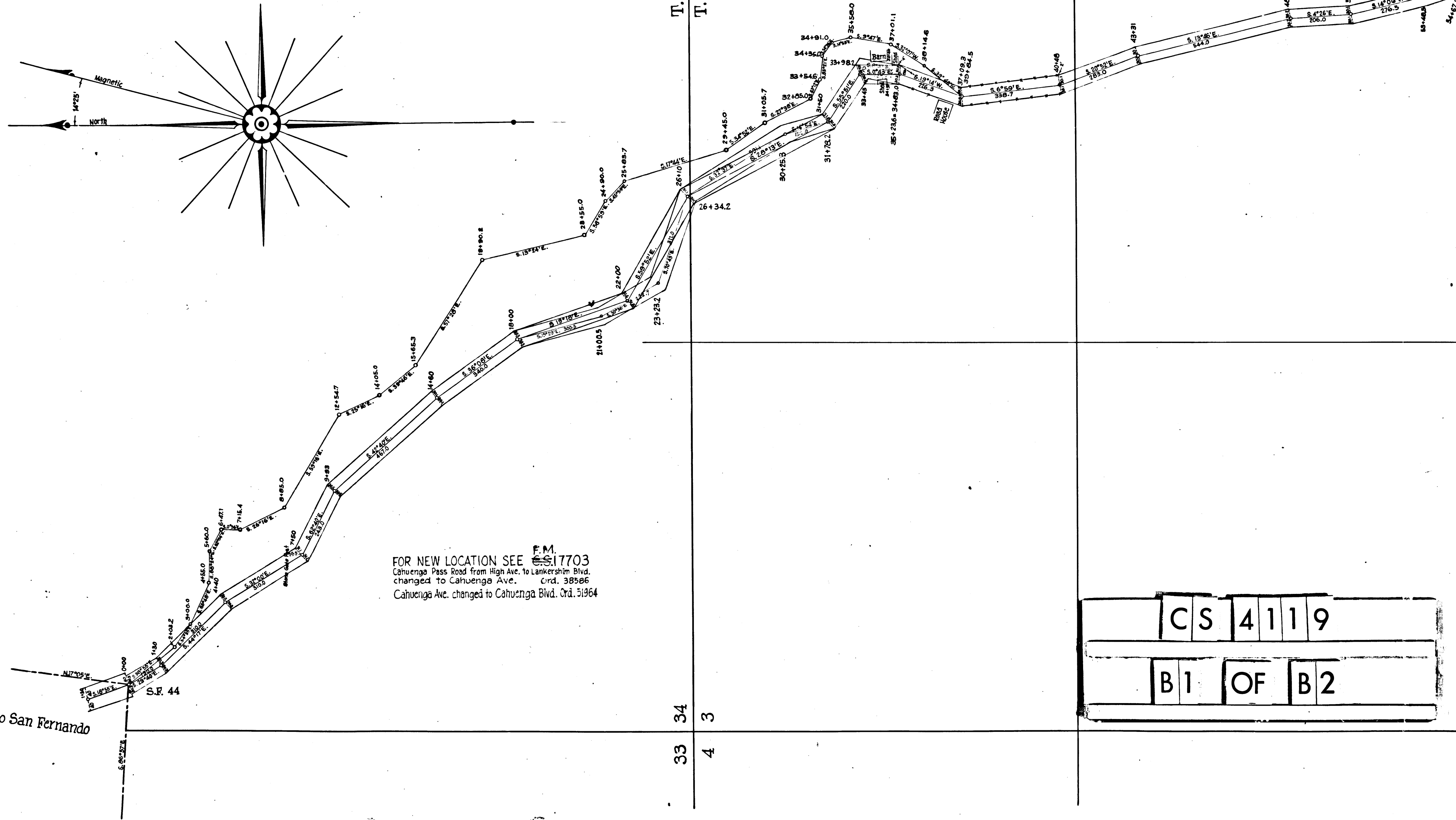
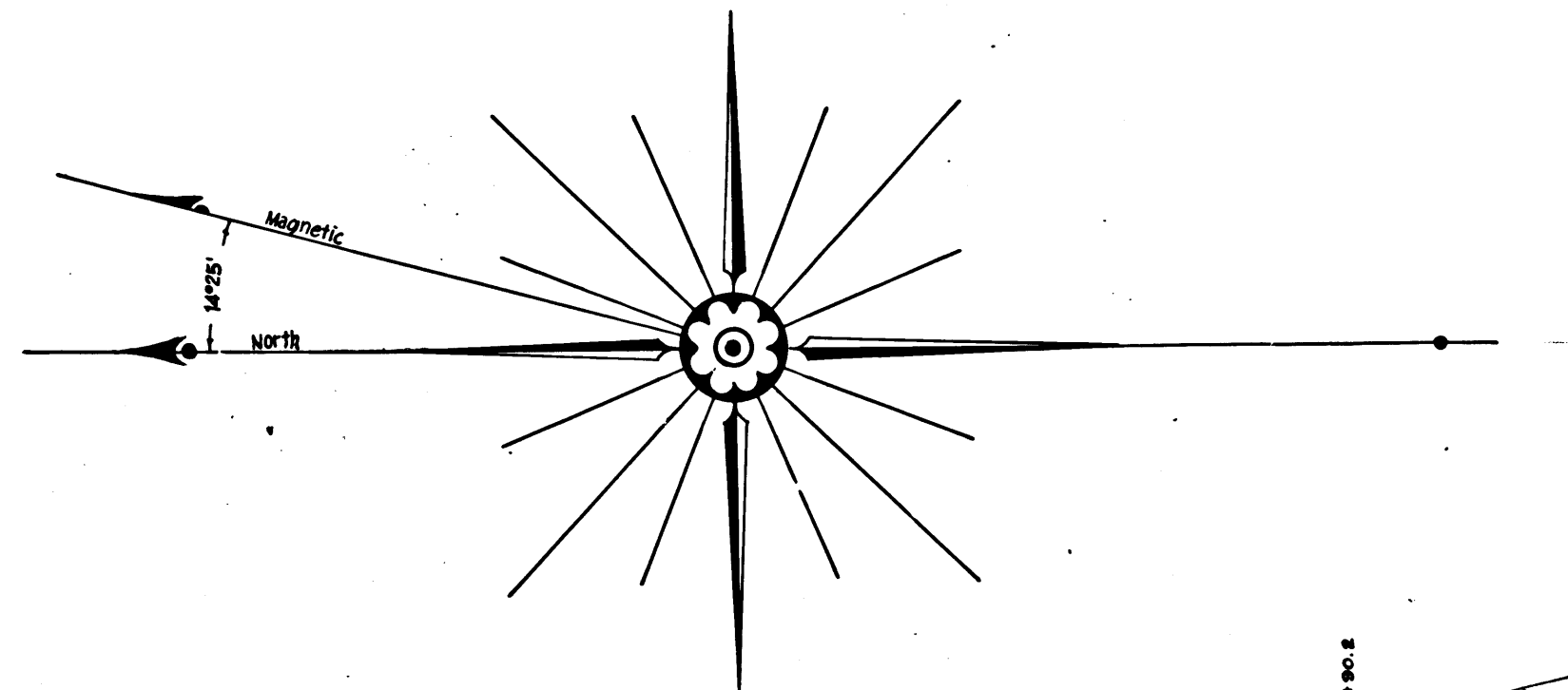
Lot 1

PROSPECT AVE.



Traced by, Frank Woo, April 1958
 Checked by, _____

See M.7~p.178



FOR NEW LOCATION SEE CS 17703
 F.M.
 Cahuenga Pass Road from High Ave. to Lankershim Blvd.
 changed to Cahuenga Ave. Ord. 38586
 Cahuenga Ave. changed to Cahuenga Blvd. Ord. 51964

CS	4	1	1	9
B	1	OF	B	2

Rancho San Fernando

S.F. 44

33 34
4 3

Center Sec. 3

LA BREA RANCH LINE

LA BREA RANCH LINE

LA BREA RANCH LINE

Rancho

La Brea

LA BREA
M.R. 59-96

Lot 2

Blk. A.

Lot 1

PROSPECT AVE.

1/4 W. cor. lot 5, Sub. 20, La Brea
(Recorded B-55 p. 87 Misc. Recs.)

	C	S	4	1	1	9
	B	2	OF	B	2	

See M.7 ~ p.178

Center Sec. 3

