

E. J. BALDWIN

Proportional D. 100.00 chs.
95.37 chs.
for City of St. Louis

Proportional D. 100.00 chs.
95.37 chs.

Proportional corner

E. J. BALDWIN

LA

REED TRACT

ROWLAND TRACT

Riffin

Newcomb

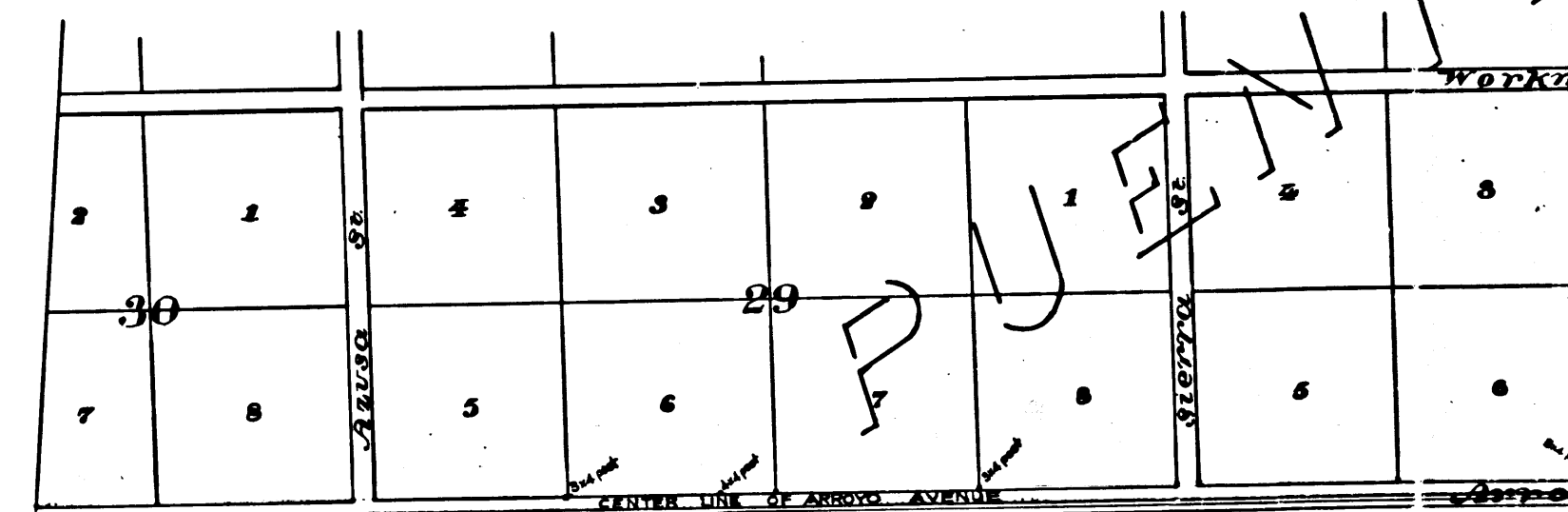
D. Reichert

D.C. Mensing

Stevenson's Line
Stafford & Fisher East 395.06 Chs. Line

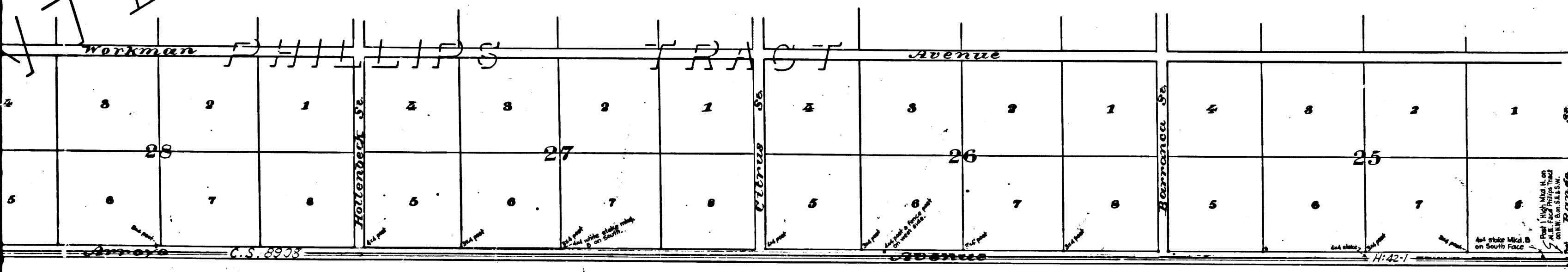
Stafford & Fisher Line

CENTER LINE OF ARROYO AVENUE



C	S	6	1	7	4
A	1	OF	B	2	

WHITE



Kerckhoff

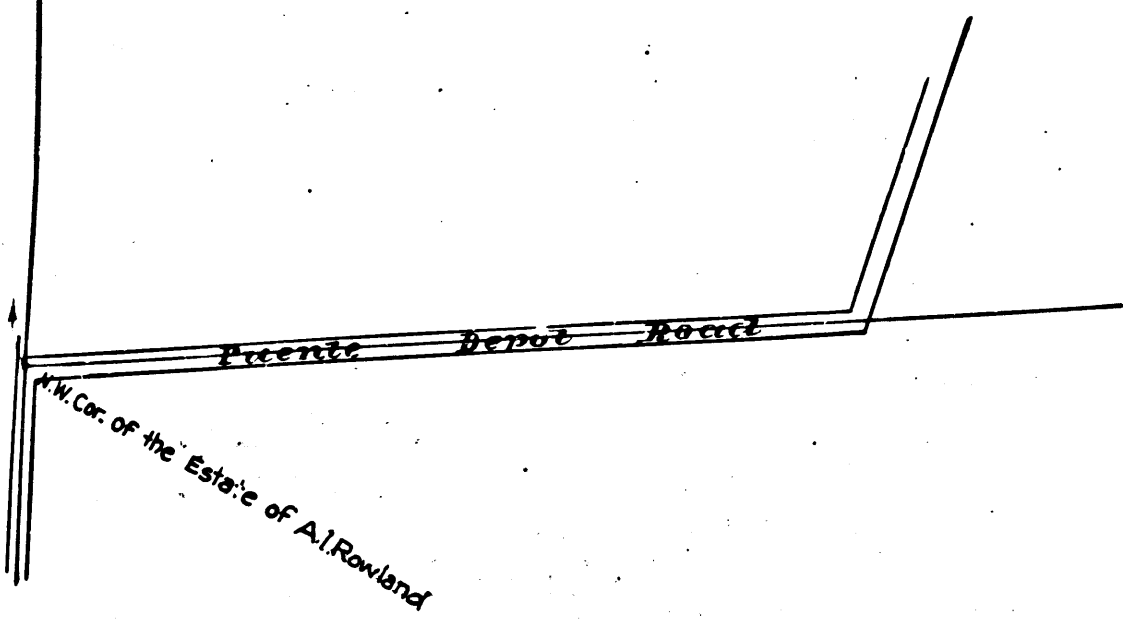
C	S	6	1	7	4
A	2	OF	B	2	

E. J. BALDWIN

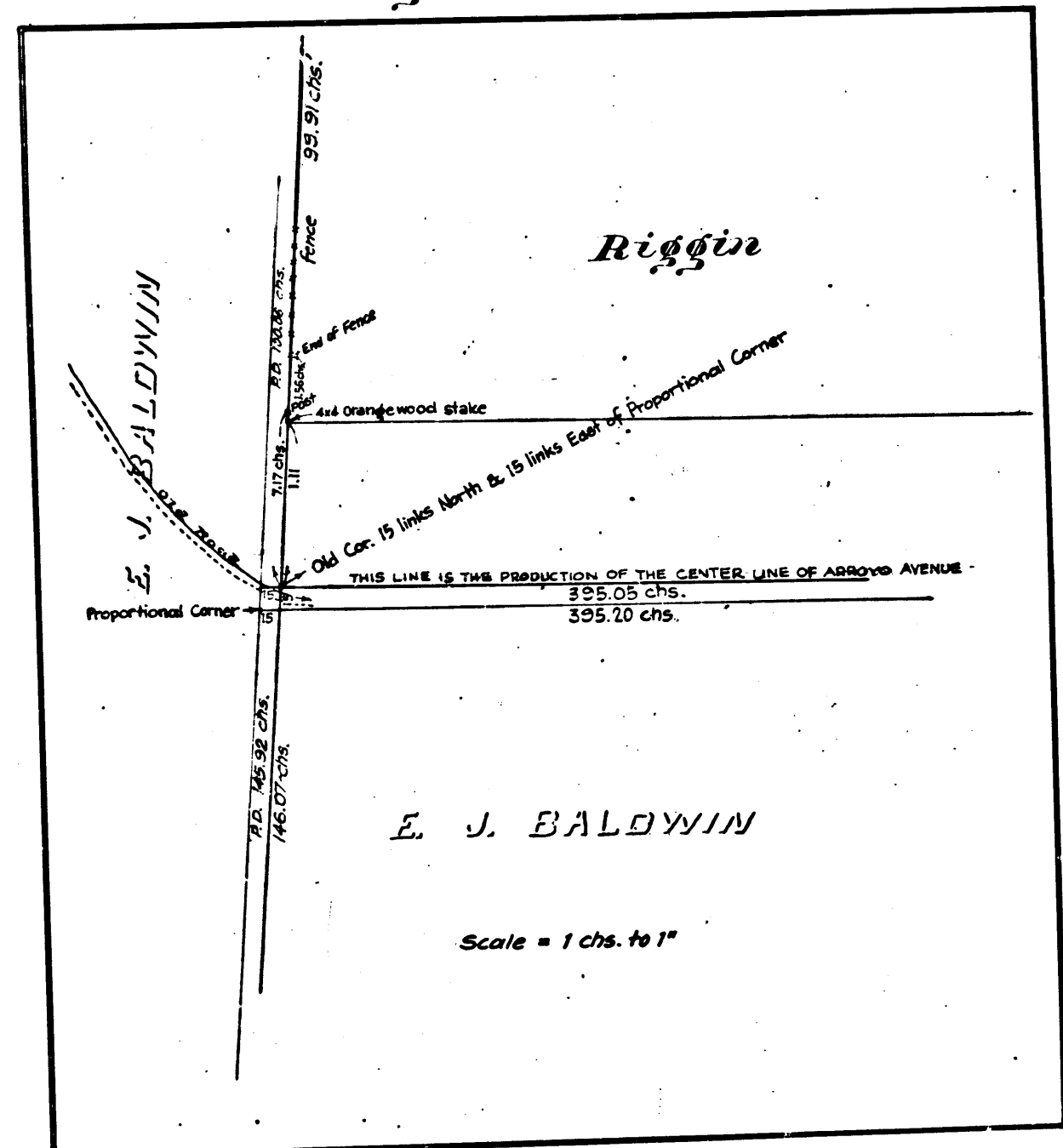
LA

RANCHO

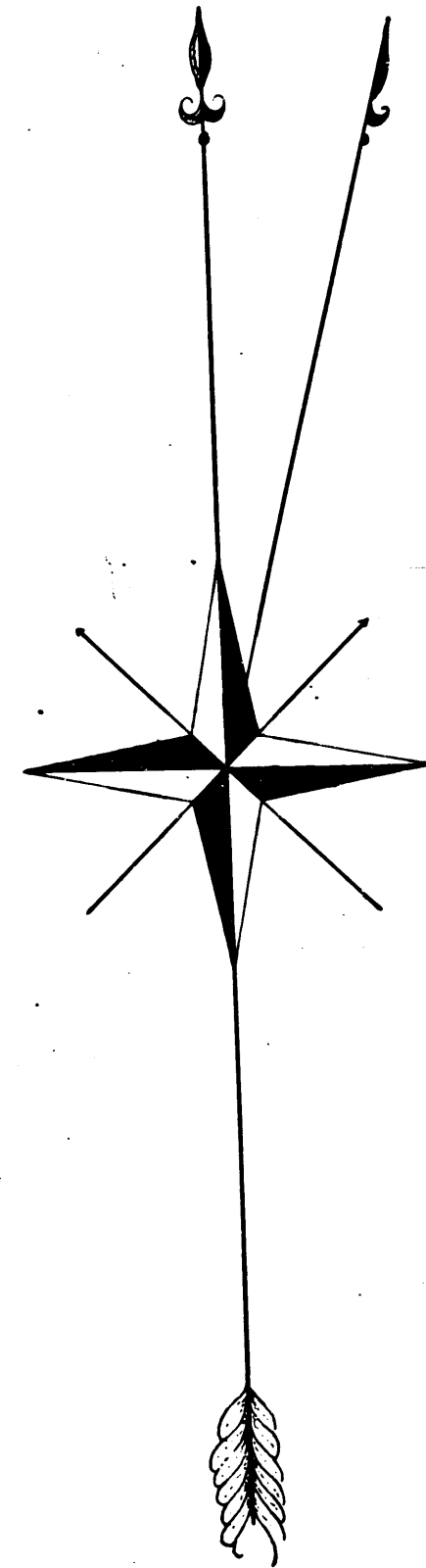
N. 1/4 E.
146.07 chs.
Proportional D. 145.88 chs.



Marginal Map



CS	6	1	7	4
B	1	OF	B	2



MAP

*Showing the line between Stations
2 and 3 of the Partition of the
RANCHO LA PUENTE
between Workman and Rowland
for the center line of Arroyo Ave;
Surveyed by order from the Honorable
Board of Supervisors in November 1893
by G. M. D. Fisher Deputy County Surveyor, and
Harry F. Stafford Ex-County Surveyor, of
Los Angeles County California.*

See C.S. 3416

This photact tracing made April 1958 from the cloth-mounted
egg shell original map which been discarded.
Retouched by, Franklin W. Co., 1958.
Checked by, R. J. B.

Var 1518 E.

Scale 1 cm = 1 inch

COUNTY SURVEYORS MAP NO. 6174

