

24th STREET

~~Vine Street~~

from Vermont Avenue to Rosedale Avenue.

Surveyed under instructions from

The Honorable Board of Supervisors

of Los Angeles County, California

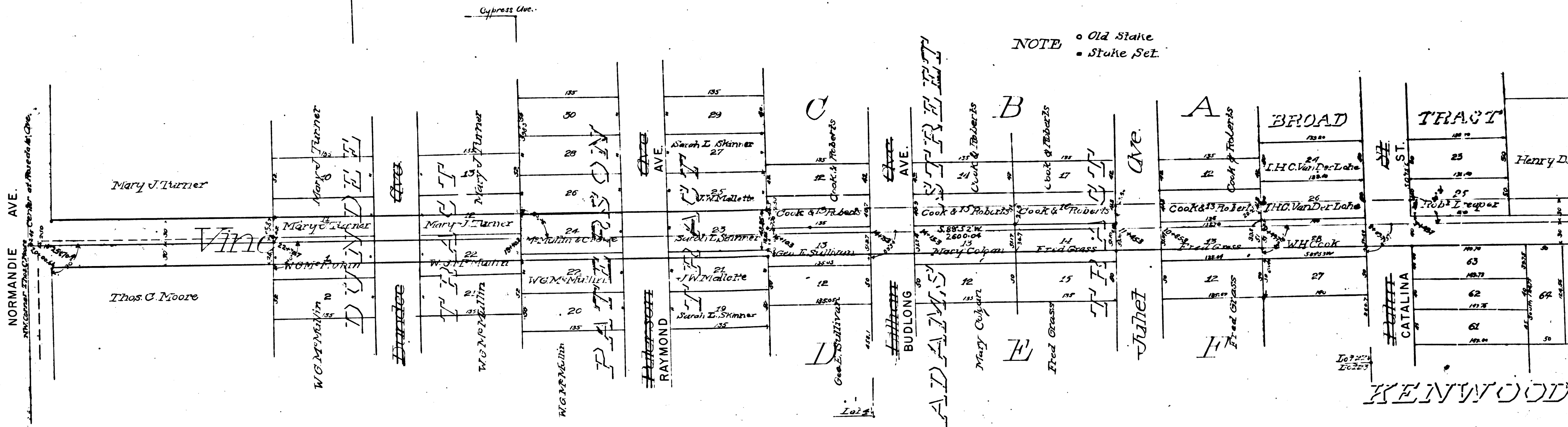
By E.T. Wright, Co Surveyor.

July 18 1895

Scale 80' to 1" inch.

I.M. No 9

NOTE
• Old Stake
• Stake Set



C	S	6	6	0	9
A	1	OF	A	2	

24th STREET

~~Vine Street~~

in Vermont Avenue to Rosedale Avenue.

Surveyed under instructions from

The Honorable Board of Supervisors
of Los Angeles County, California

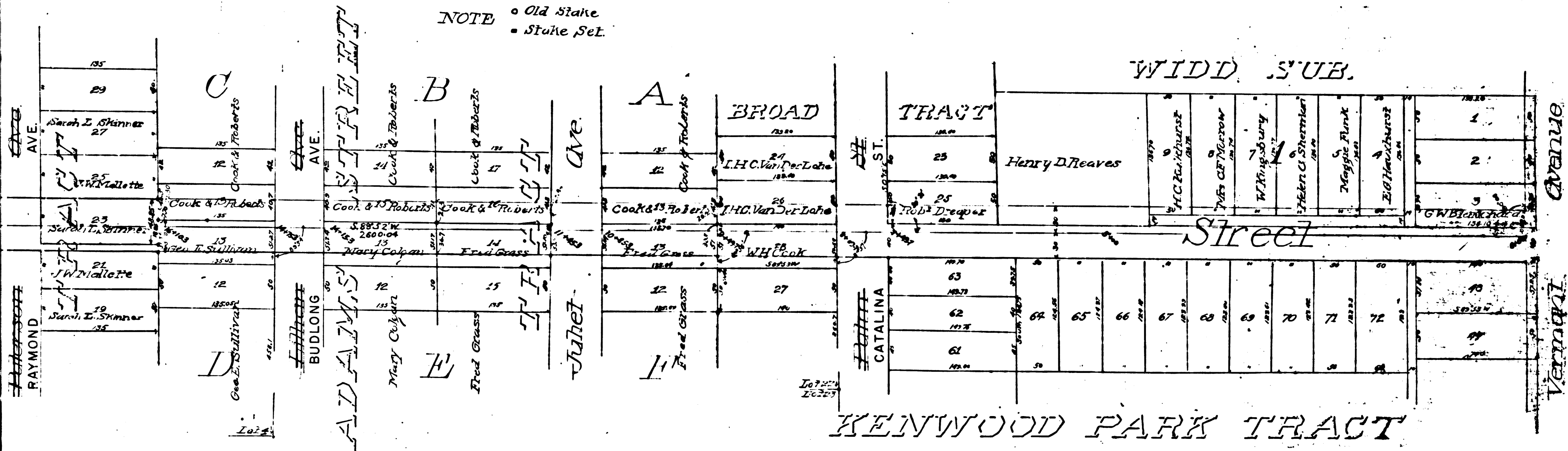
By E.T. Wright, Co Surveyor.

July 28 1895

Scale 80' to 1" ch.

I.M. No 9

NOTE
 ○ Old Stake
 ■ Stake Set.



C	S	6	6	0	9
A	2	OF	A	2	