

W.F. Rowland

Thomas Rowland

Mrs. L.Y. de Rowland

Thomas Rowland

Francisco Graze de

Graze de

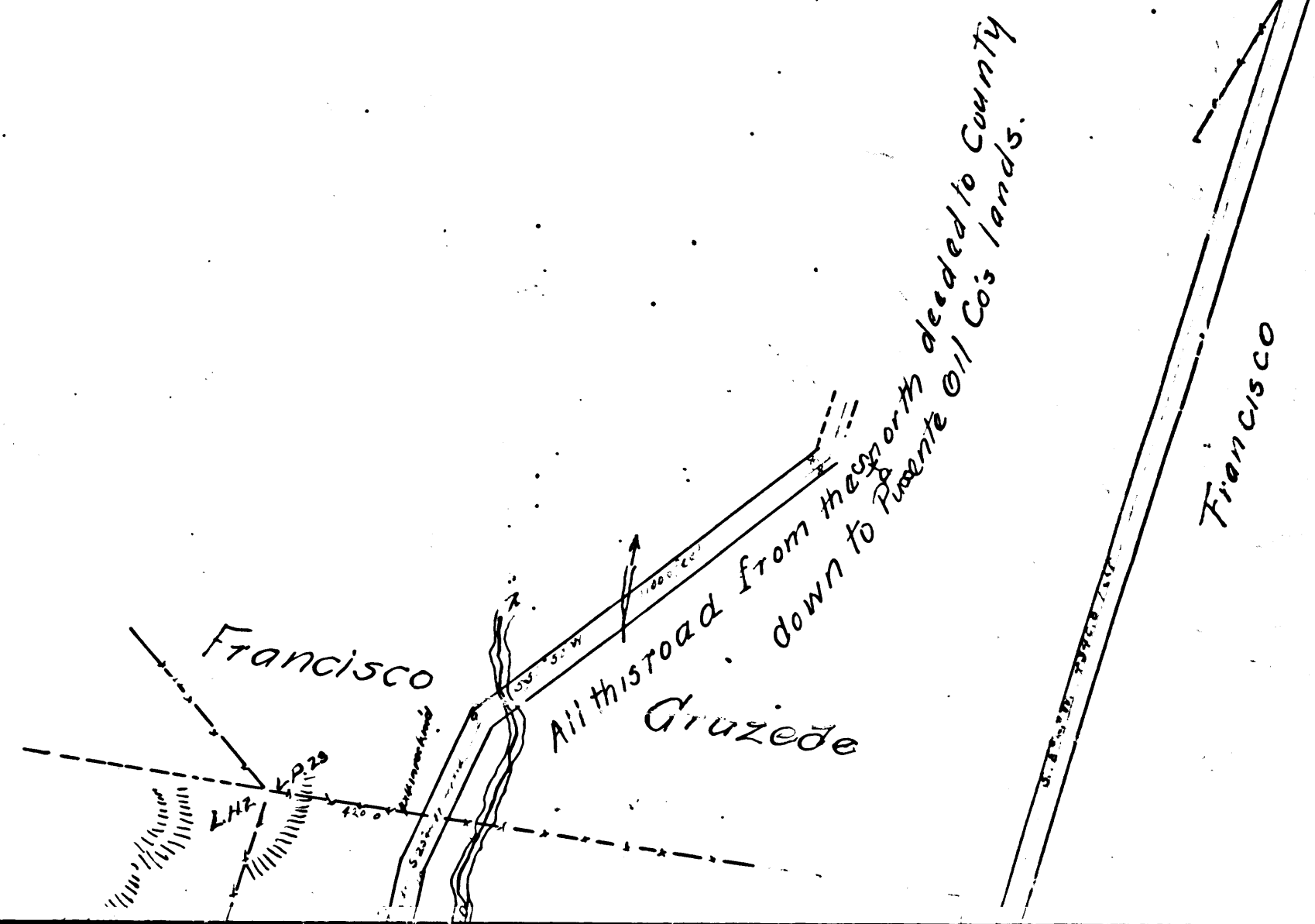
FULLERTON ROAD AND  
 MAP  
 OF THE  
 Puente <sup>una</sup> Anaheim Road  
 as changed from Sta. 5 of Stafford, Sur.

Surveyed under instructions from the Honorable Board  
 of Supervisors of Los Angeles County, Cal. dated July, 1893,  
 Survey made Aug. 24 to 11th 1893, by  
 A. R. Street, County Surveyor.  
 Scale 300 ft. per inch.

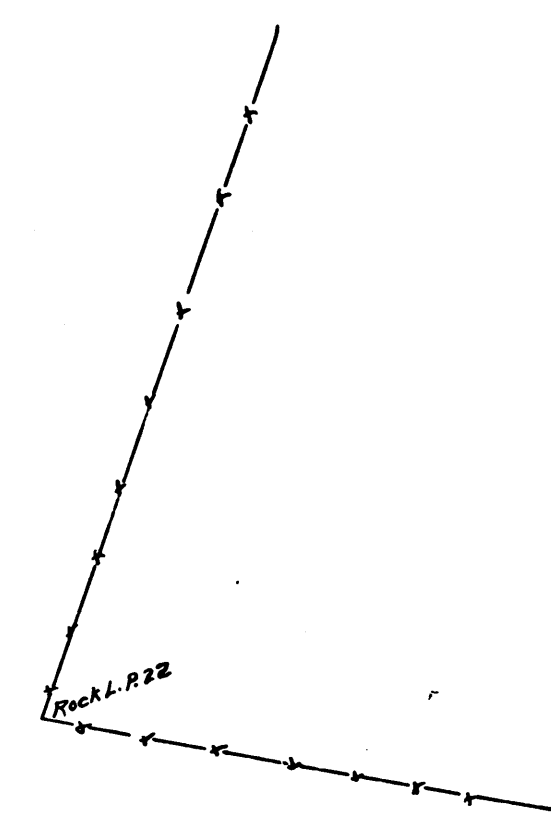
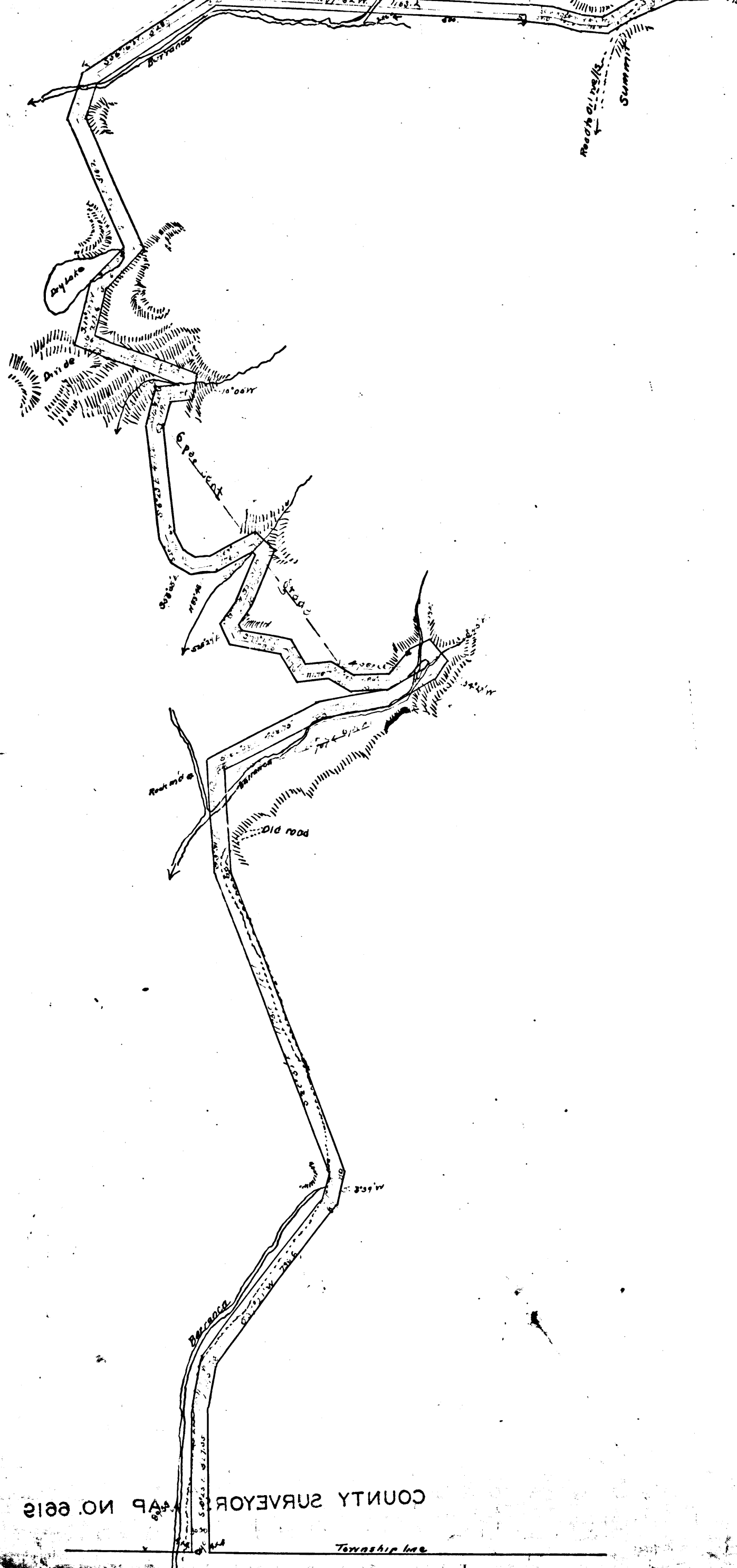
Also showing survey of a connection with a  
 Puente Ranch Road

FILED IN M. 38  
 SEE C. S. 6646  
 FILED ON 924 1893  
 T. H. WARD, Clerk,  
 BY C. H. W. Hemore  
 See Road Book is: Pages 25 and 26

CS	6	6	1	9
A	1	OF	A	3







	C	S	6	6	1	9	
	A	3	OF	A	3		

COUNTY SURVEYOR MAP NO 6619

Grande Co.

COUNTY SURVEYORS MAP NO 6619