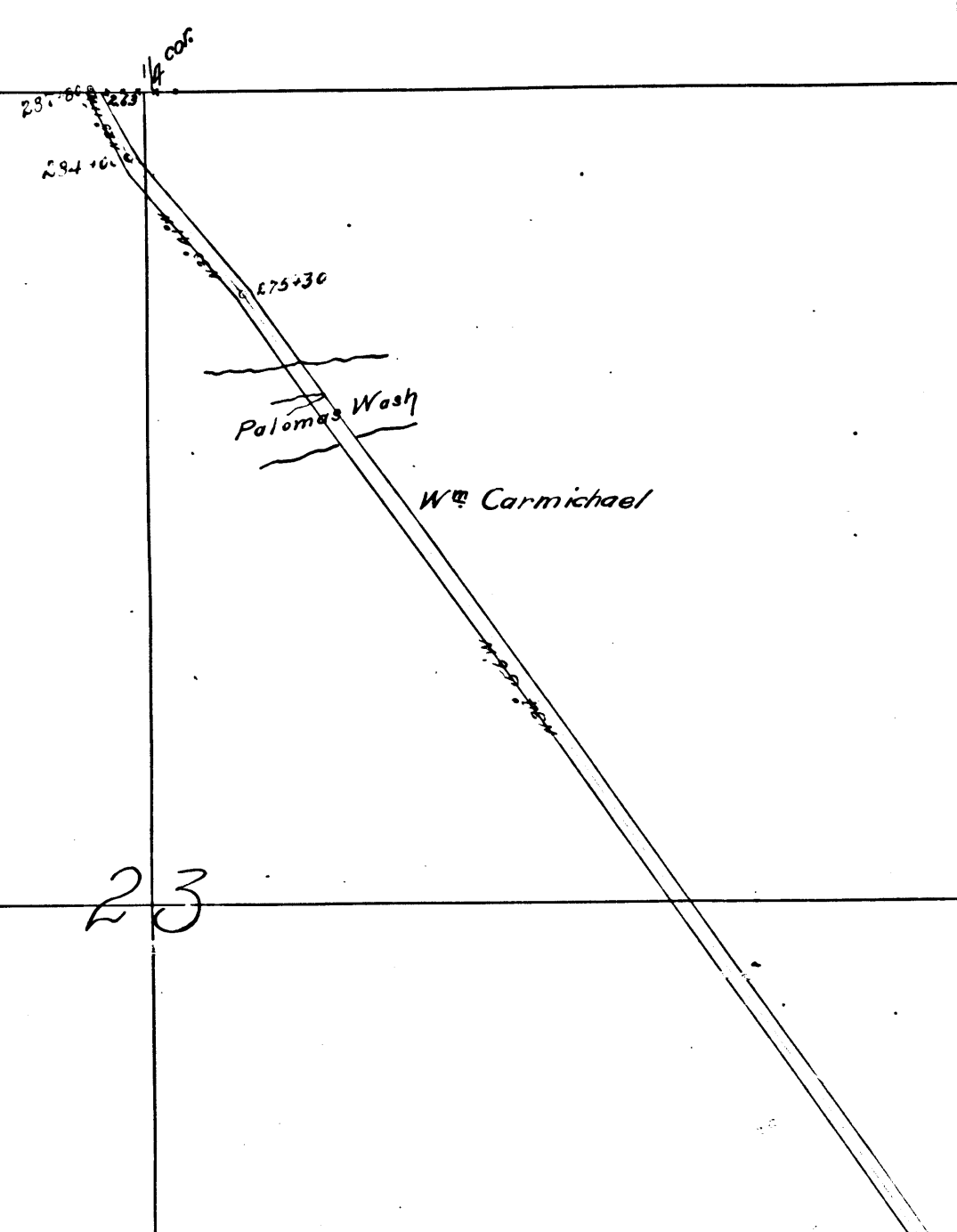


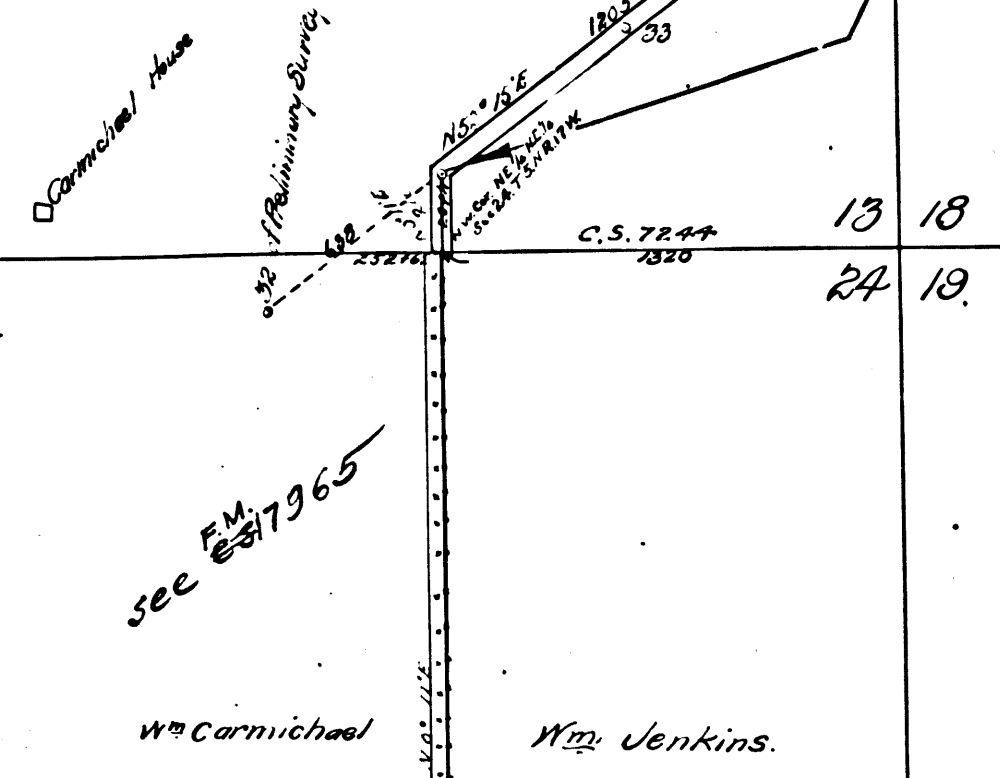
Mrs. Marple



23

13

18



24

13 18
24 19

	C	S	6	6	3	1	
	A	1	OF	A	3		

DEED 20576 D: 2-208
 See C.S. 8232
 C.S. 8773-1

Vacated - D. 46-284, O.R. 13219-388 - For new alignment see C.S. 8773-1

See Field Book 9-5-8
 12-47

23

24

W^m Carmichael

W^m Carmichael

W^m Jenkins

W^m Carmichael

W^m Jenkins

W^m Jenkins

Jenkins House

Sec. Corner

See C.S. 7244

LAKE HUGHES Portion of the
~~Certain~~ Garrett Road
 Surveyed by F.W. Skinner
 Deputy Surveyor
 May 1896
 Scale 500ft = 1 inch
 Distance in Ch.
 See field book 5 pages 49-52
 C. S. 6631
 I.M. 77

Roads vacated from these points
 Southerly - D: 46-38 R.D: 24-124

Large Oak

W^m Carmichael

W. H. George

House

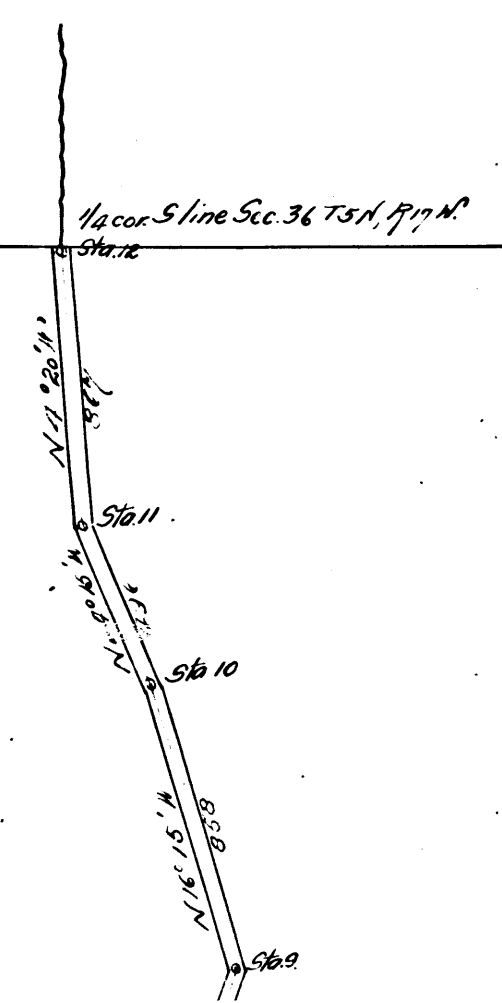
R.M. Pagson

W^m Carmichael

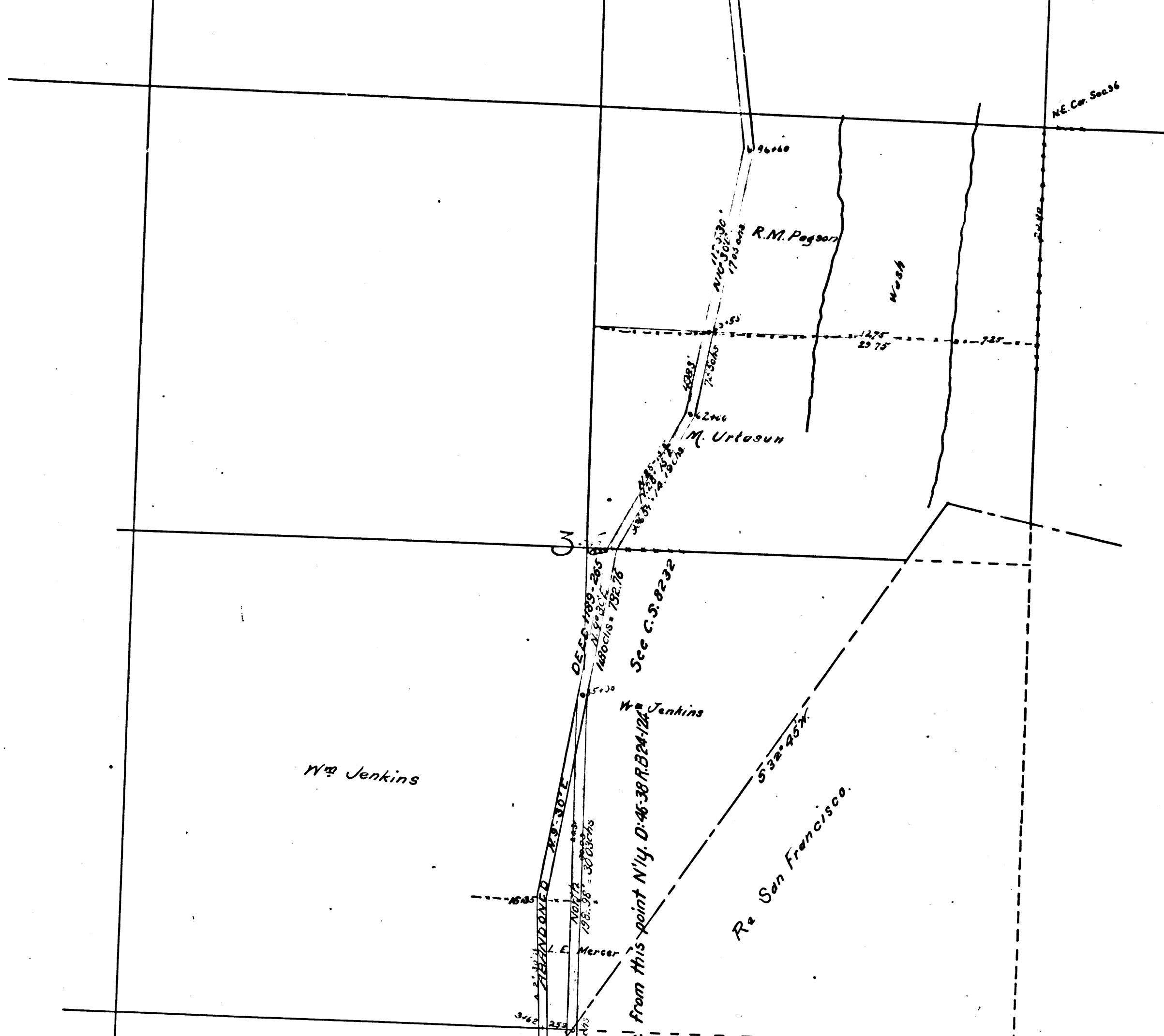
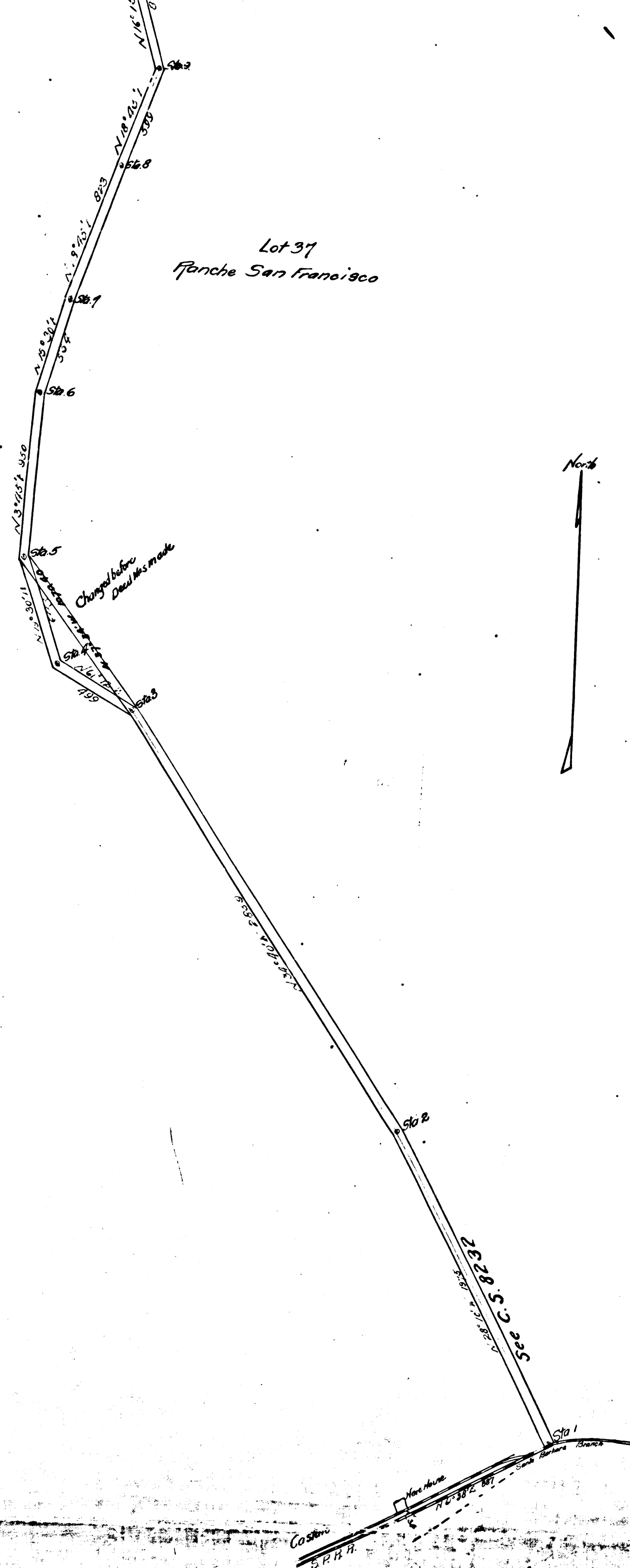
R.M. Pagson

T 5 N R 17 W

N.E. Cor. Sec 36



C	S	6	6	3	1
A	2	OF	A	3	



C	S	6	6	3	1
A	3	OF	A	3	