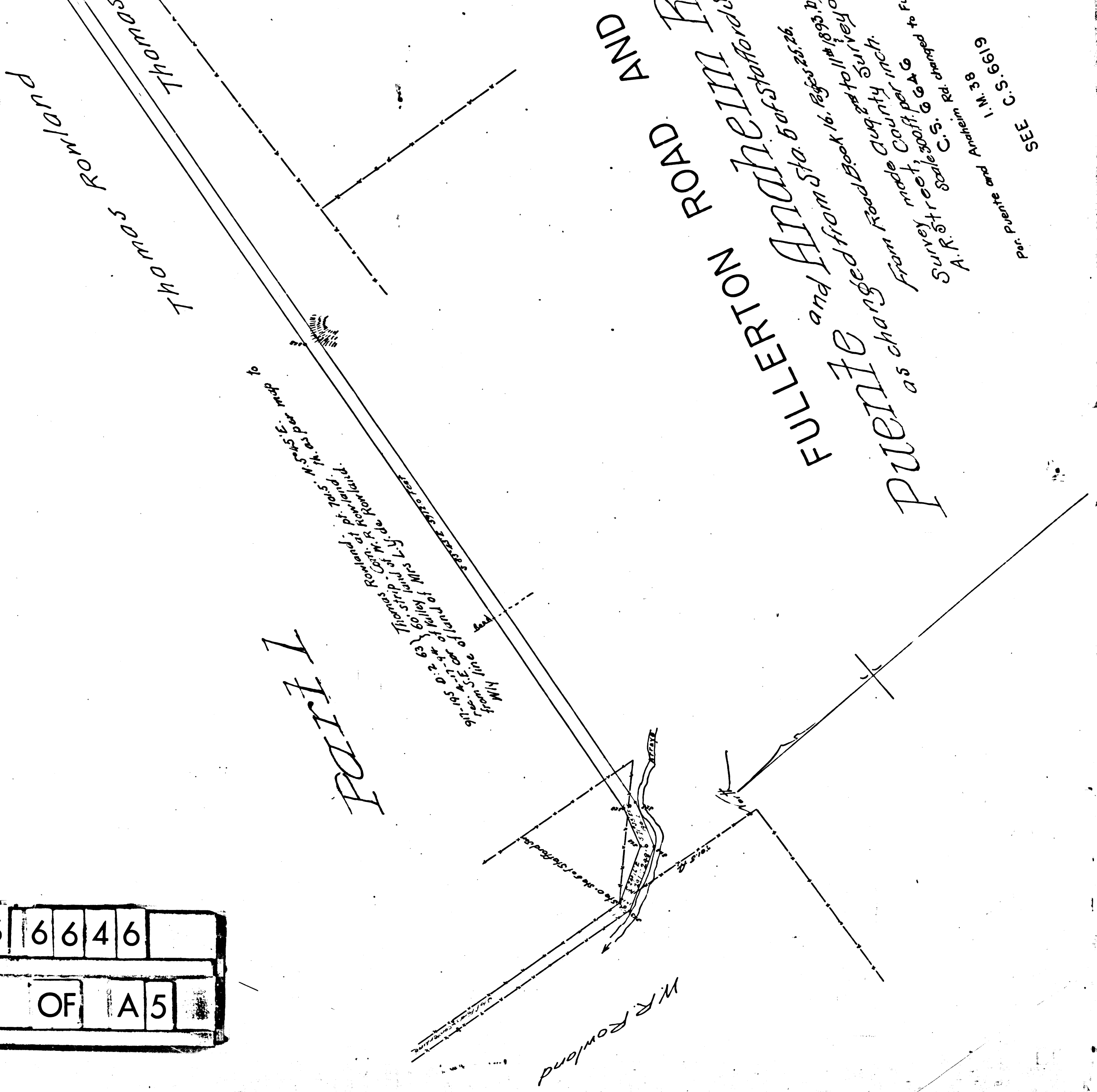


CS 6646  
 A1 OF A5

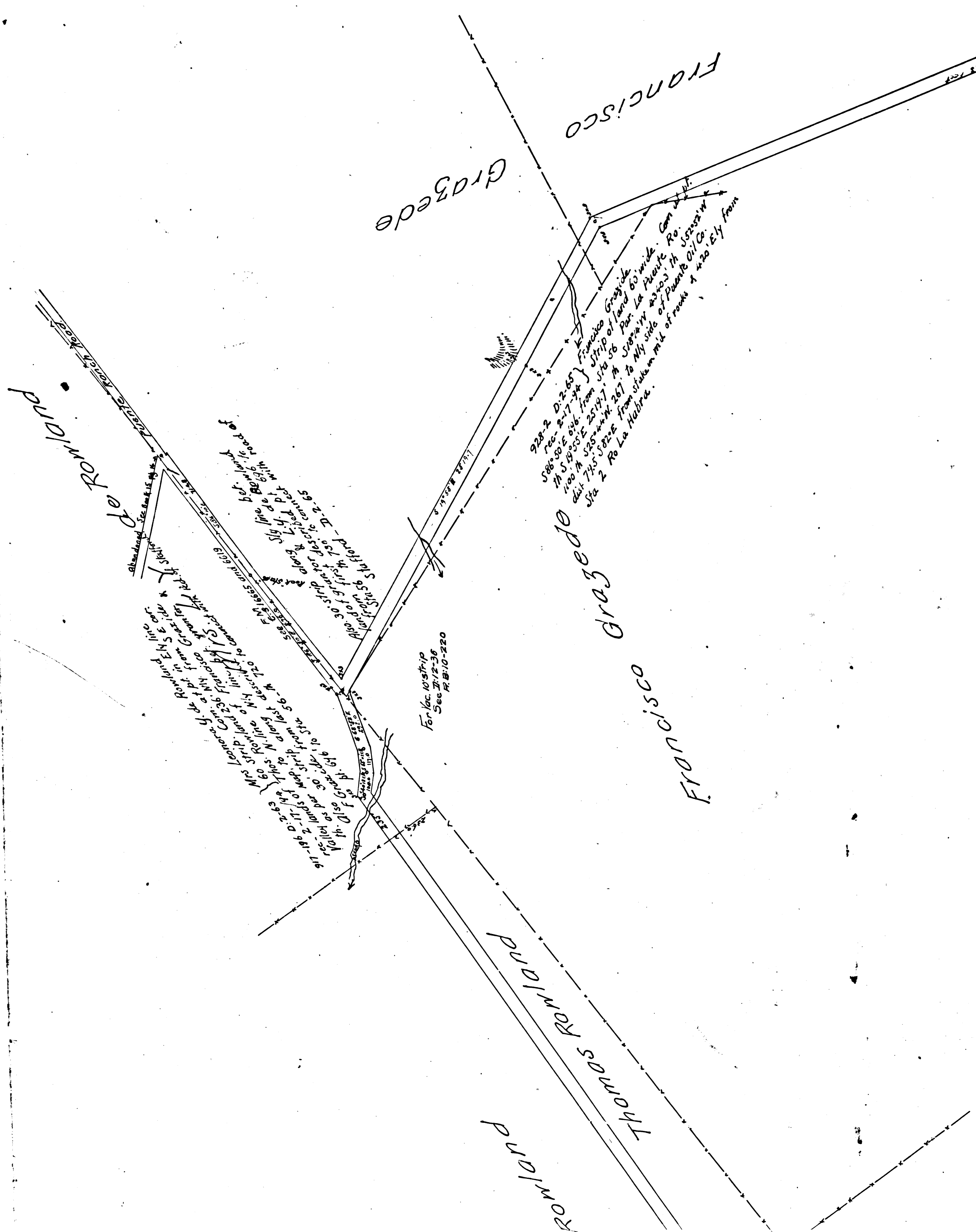
COUNTY SURVEYORS MAP NO. 8888

COUNTY SURVEYORS MAP NO. 8888



AND FULLERTON ROAD  
 AND PUELLI  
 as changed from Sta. 6 of Stafford's  
 Survey made County inch.  
 A.R. Street, scale C.S. 6646 changed to P.

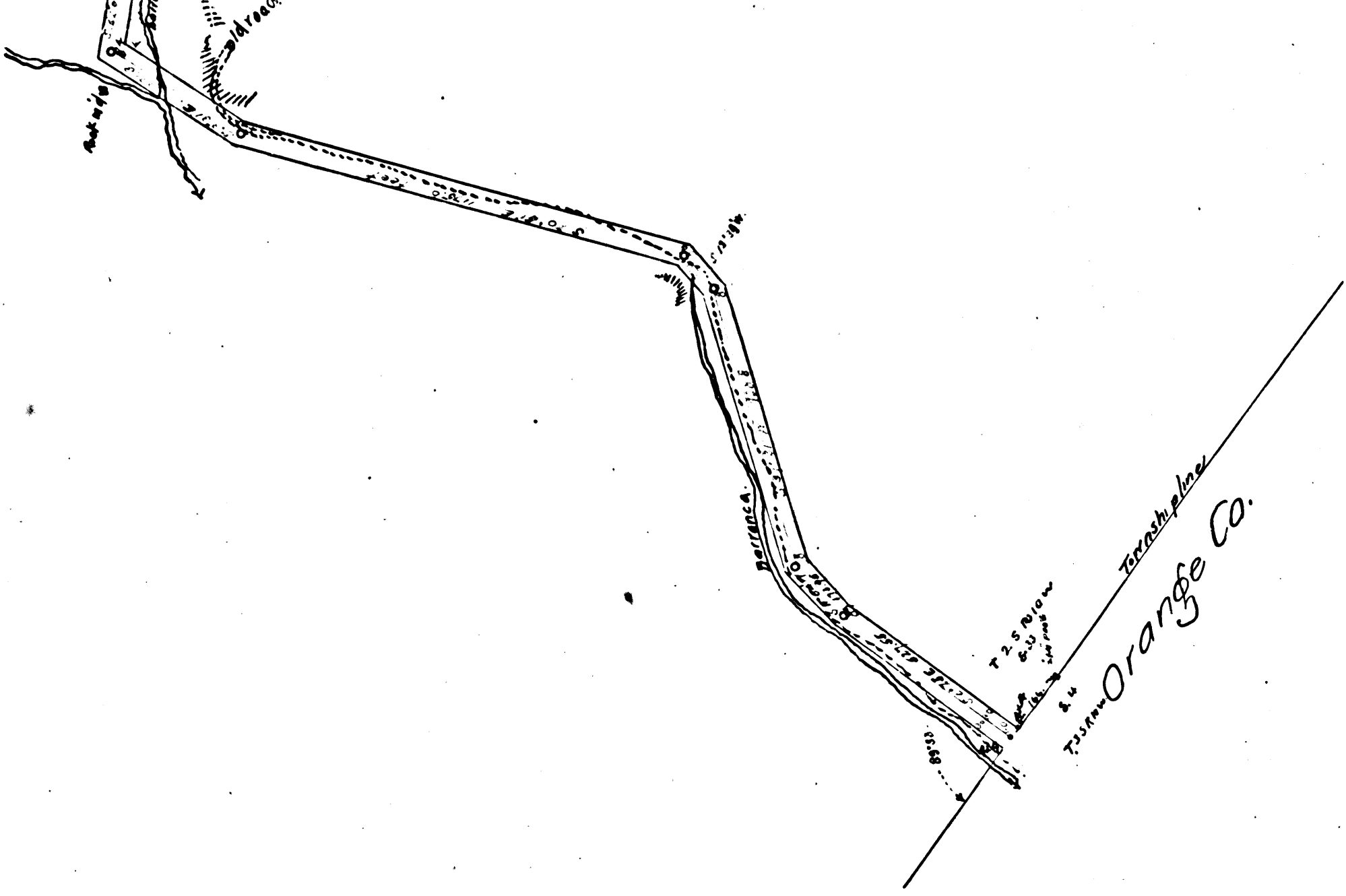
SEE  
 C.S. 61619  
 I. M. 38  
 A. R. Street and Fullerton Road



CS 6646  
 A2 OF A5

ROAD AND

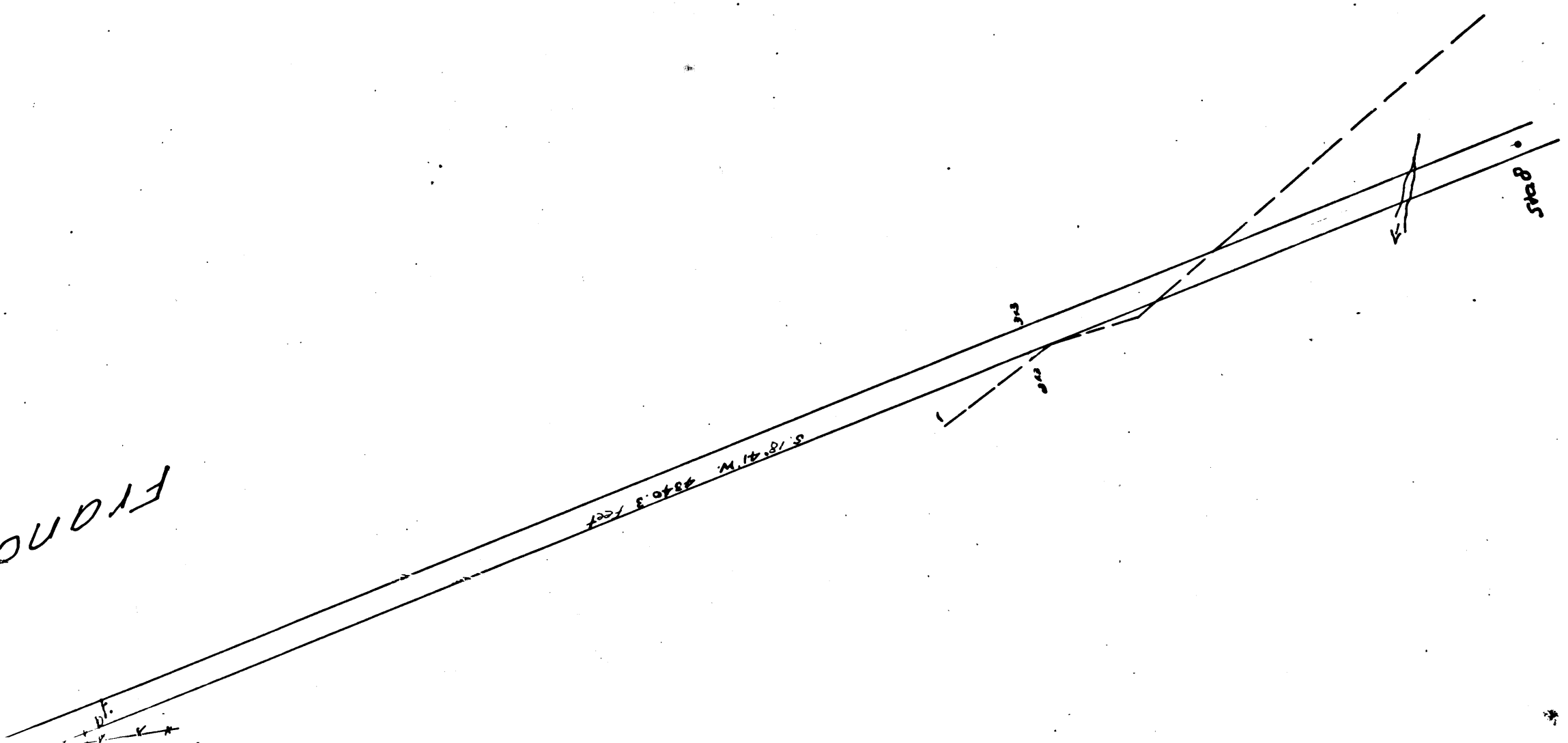
THE IME INSURANCE  
 17510. 5 of 55 to 100, 26.  
 and Book 16, Pages 25, 26.  
 made County Survey of  
 1893, by  
 Fullerton Rd. D: 49-225  
 Scale 500 ft. to 1 in.  
 C.S. Rd. changed to  
 1 M. 38  
 C.S. 61919  
 ESES



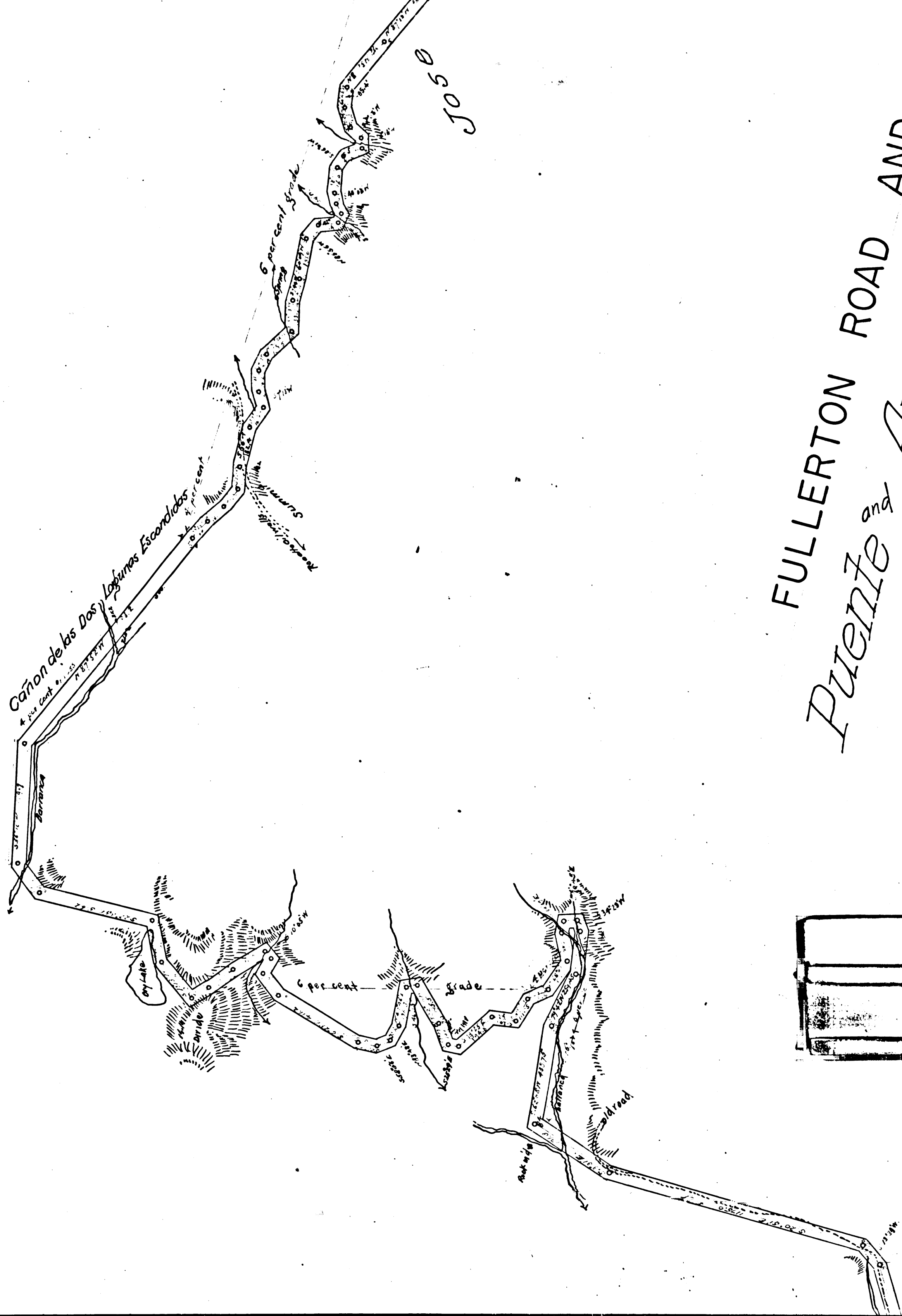
CS	6	6	4	6
A	3	OF	A	5

Q1030

FRANCISCO



12



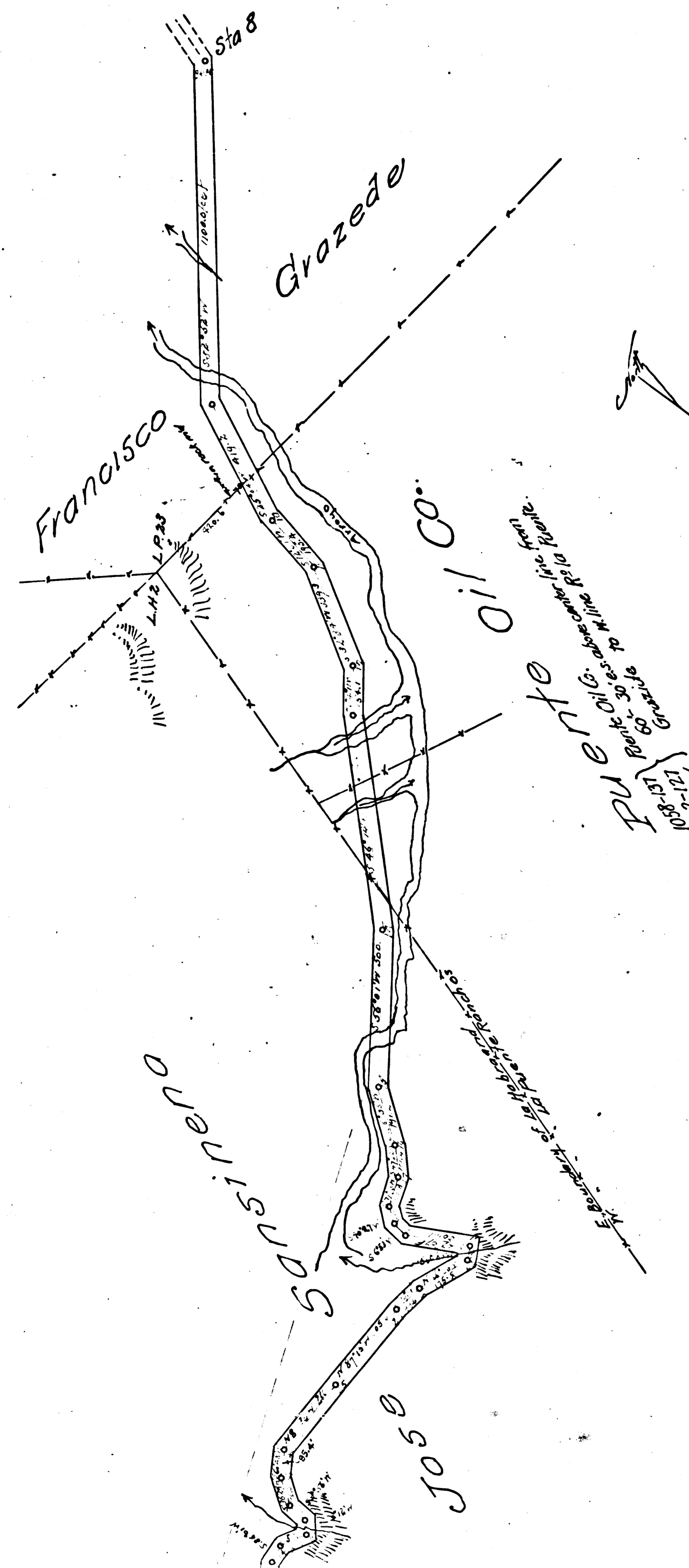
5050

FULLERTON ROAD AND  
 PUENTE and Anaheim Road

PART 2

CS	6	6	4	6
A 4	OF	A 5		

Sheet 1. 1922



	C	S	6	6	4	6	
	A	5	OF	A	5		

AND  
ROAD