

Map of GALLATIN ~~SCHOOL~~ HOUSE ROAD

Surveyed by Board Order dated July 14, 1893

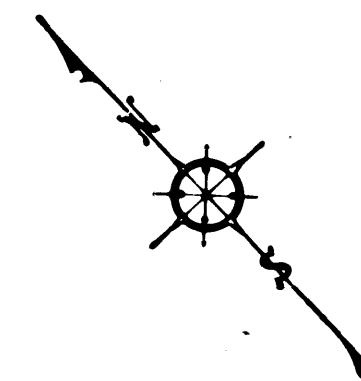
Alfred R. Street \leftarrow County Surveyor

COUNTY SURVEYORS MAP NO 6647

Scale: 1 in = 200 ft \leftarrow Mag. Var. 14° 30'

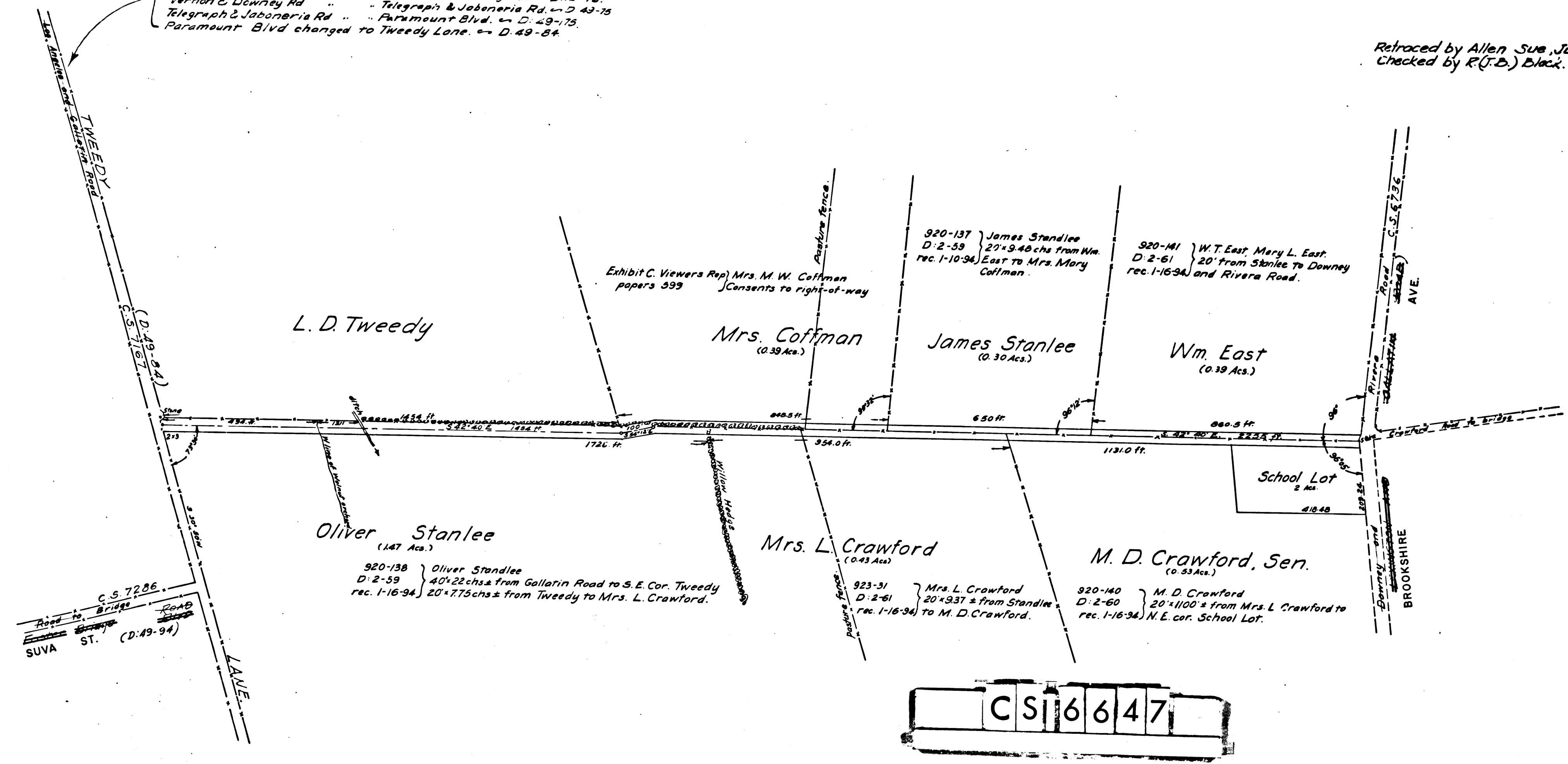
"R" Bk: 5-58 \leftarrow Rd. Book 16-23

I. M. 36



Notes:
 Santa Gertrudes Rd. changed to Vernon & Downey Rd. \leftarrow D: 13-76.
 Vernon & Downey Rd. " " Telegraph & Jaboneria Rd. \leftarrow D: 43-75.
 Telegraph & Jaboneria Rd. " " Paramount Blvd. \leftarrow D: 49-75.
 Paramount Blvd. changed to Tweedy Lane. \leftarrow D: 49-84.

Retraced by Allen Sue, June, 1959
 Checked by R. (J.B.) Black.



C S 6647