

# Vermont Avenue

from Adams St. to Jefferson St.

December 1892.

by Harry F. Stafford

Scale 100 feet = 1"

County Surveyor.

Road Book 16 page 16.

C. S. 6654

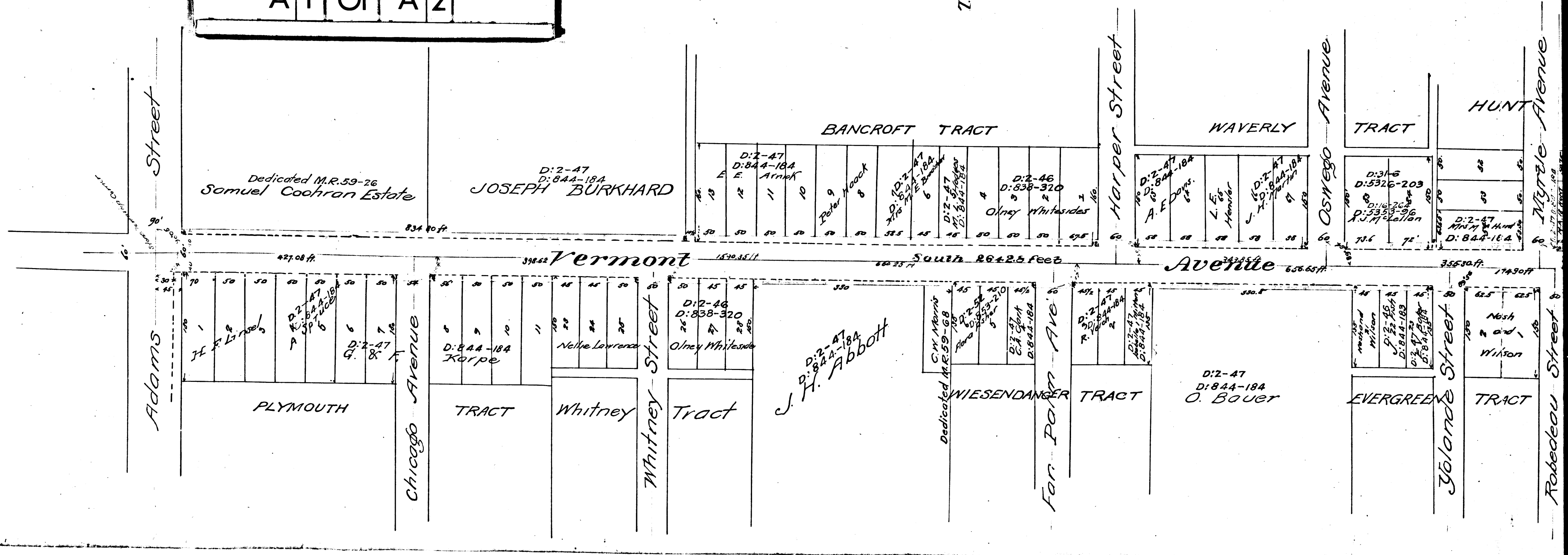
I. M. 9

Note Black figures recorded Distances —  
Red figures measured Distances —

For notes see  
Co. Sur. Record of Surveys 5-21

CS	6654	
A1	OF	A2

SCC 6  
T 2 S. R. 13 11



Dedicated M.R. 59-26  
Samuel Cochran Estate

D: 2-47  
D: 844-184  
E. E. Atank  
JOSEPH BURKHARD

BANCROFT TRACT

WAVERLY

TRACT

HUNT

Vermont Avenue

Avenue

PLYMOUTH

TRACT

Whitney

Tract

D: 2-47  
D: 844-184  
J. H. Abbott

WIESENDANGER TRACT

D: 2-47  
D: 844-184  
O. BOUER

EVERGREEN

TRACT

# Vermont Avenue

from Adams St. to Jefferson St.

December 1892.

by Harry F. Stafford

Scale 100 feet = 1"

County Surveyor.

Road Book 16 page 16.

C. S. 6654

I. M. 9

Note Black figures recorded Distances —

Red figures measured Distances —

SCC 6  
 T. 2 S. R. 13 11"

For notes see  
Co. Sur. Record of Surveys 5-21

Vermont Ave., name establ. Ord. 39377

C	S	6	6	5	4
A	2	O	F	A	2

