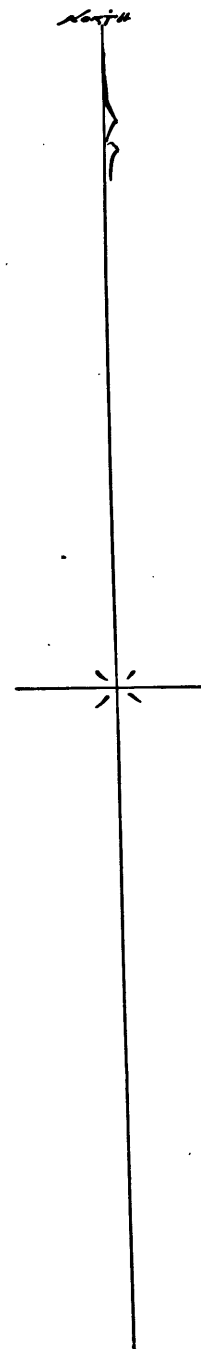
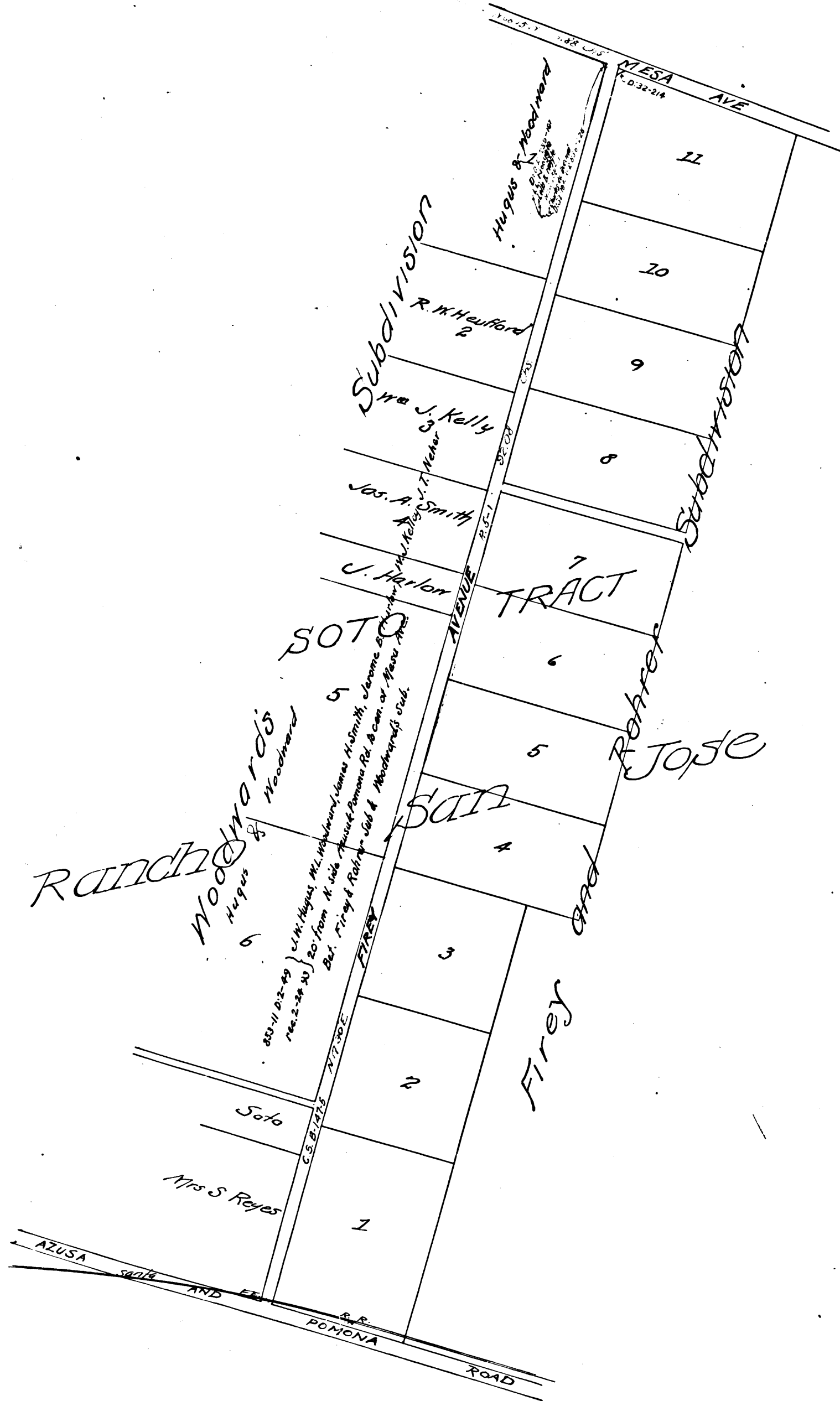


1/4 of 1/4 of T15R9W S.B.M.
 Sec 1 S.C.1
 T15R9W S.B.M.



Firey Avenue
 Situated in
 T15R.9W. S.B.M. San Jose Road District

Surveyed in June A.D. 1892
 by Harry F. Stafford
 County Surveyor
 C. S. 6658
 I.M. 49

Road Book 16 page 11

Scale 5 chs. 1"

CS 16658