



# AZUSA AVE EXTENSION T.I.S. R.IOW.

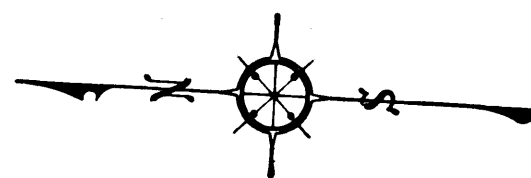
Surveyed Oct. 1890  H.F. Stafford County Surveyor  
 Rd. Bk. 14-15  Rd. Papers 181-399  
 COUNTY SURVEYORS MAP NO 6663

Scale 1 in. = 6 chs.  
 (ROAD EXTENSION 60' WIDE)

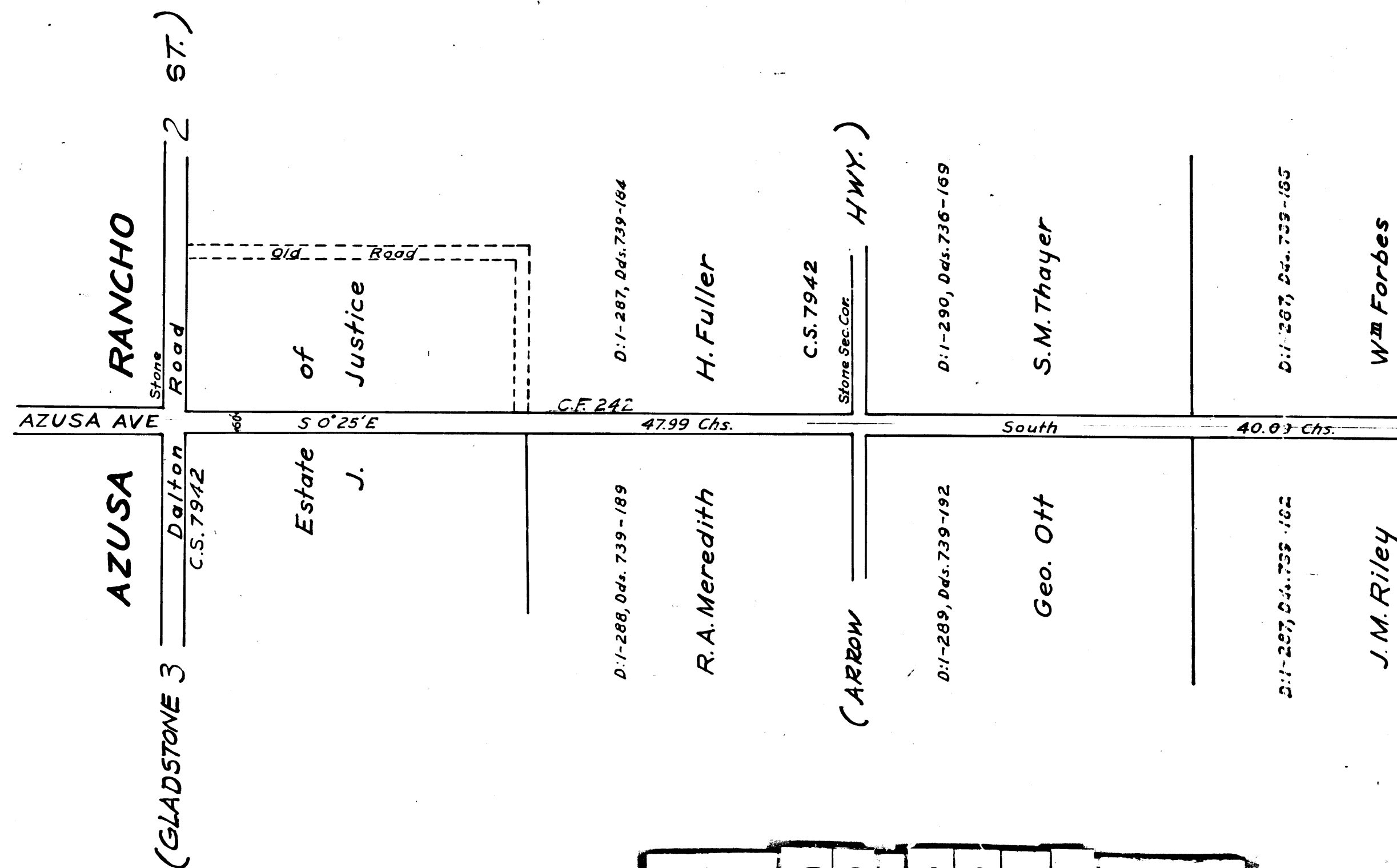
For deeds opening this road as 33' wide see C.S. 6701  
 I.M. 47

See Road papers 181  
 " " 399

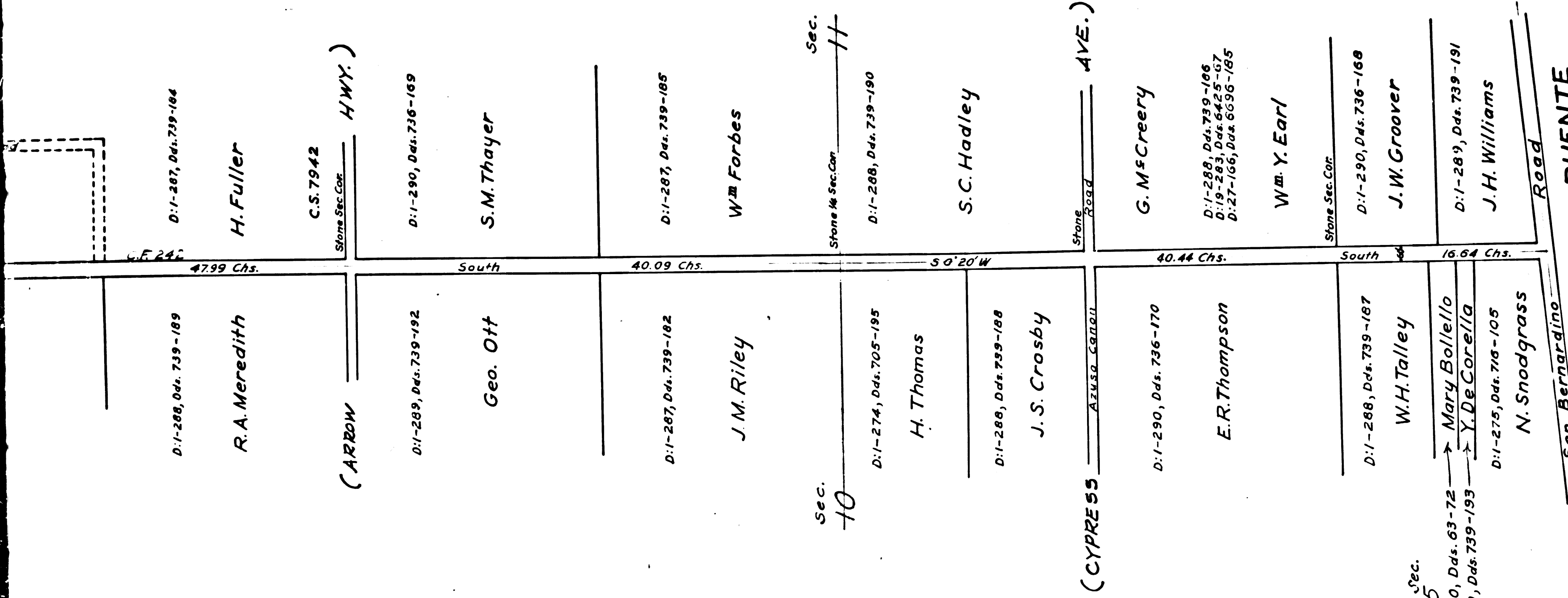
See also C.S. 7684 & F.M. 11549



Retraced by H. Barrio, June, 1959  
 Checked by R.J. Black



C	S	6	6	6	3
A	1	OF	A	2	



D:1-288, Dds. 739-189

R. A. Meredith

(ARROW

C.S. 7942

Stone Sec. Cor. HWY.)

D:1-289, Dds. 739-192

Geo. Ott

D:1-290, Dds. 736-189

S. M. Thayer

D:1-287, Dds. 739-182

J. M. Riley

D:1-287, Dds. 739-185

Wm Forbes

Sec. 10

D:1-274, Dds. 705-195

H. Thomas

Stone 1/4 Sec. Cor. Sec. 11

D:1-288, Dds. 739-190

S. C. Hadley

D:1-288, Dds. 739-188

J. S. Crosby

(CYPRESS

Stone Road AVE.)

D:1-290, Dds. 736-170

E. R. Thompson

G. McCreery

D:1-288, Dds. 739-186  
D:1-283, Dds. 6425-67  
D:27-166, Dds. 6696-185

Wm. Y. Earl

D:1-288, Dds. 739-187

W. H. Talley

Stone Sec. Cor.

D:1-290, Dds. 736-168

J. W. Groover

Frac. Sec. 15

D:1-30, Dds. 63-72 → Mary Bollella  
D:1-289, Dds. 739-193 → Y. De Corella

D:1-275, Dds. 716-105

N. Snodgrass

Frac. Sec. 14

San Bernardino Road

RANCHO LA PUENTE

	C	S	6	6	6	3
	A	2	OF	A	2	