

Phillips Tract

Ronland Tract

Baldwin

E. J.

Baker

Puente

Amor

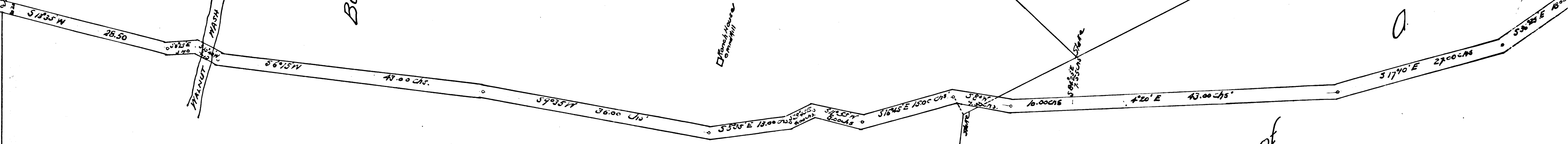
Loa
Estate

Rancho

and

of

CS	6	6	7	3
A1	OF	A2		



Rancho

La
Estate

Baker

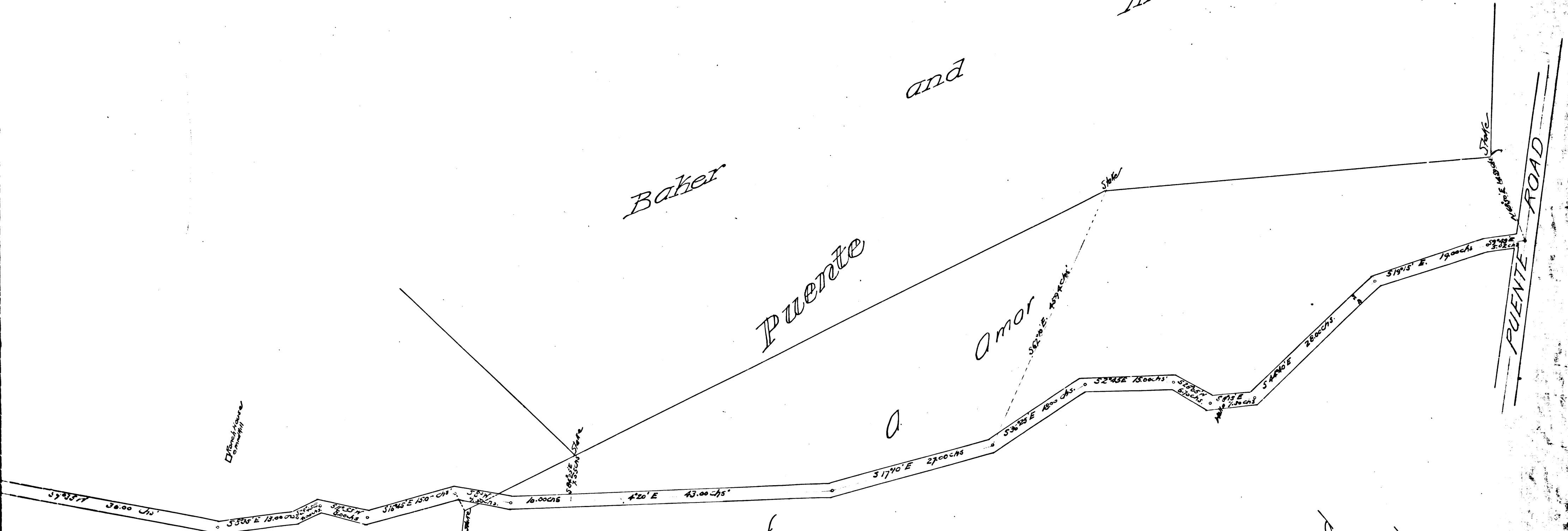
Puente

and

Rhodes

Amor

PUENTE ROAD



CS	6	6	7	3
A	2	OF	A	2

Ross and Corina County Road
 Surveyed October 1890
 by Harry F. Stafford
 C. S. 6673 County Surveyed
 I. M. 38
 SCALE 10 CHS TO ONE INCH.

Road: Book 18 Page 1A