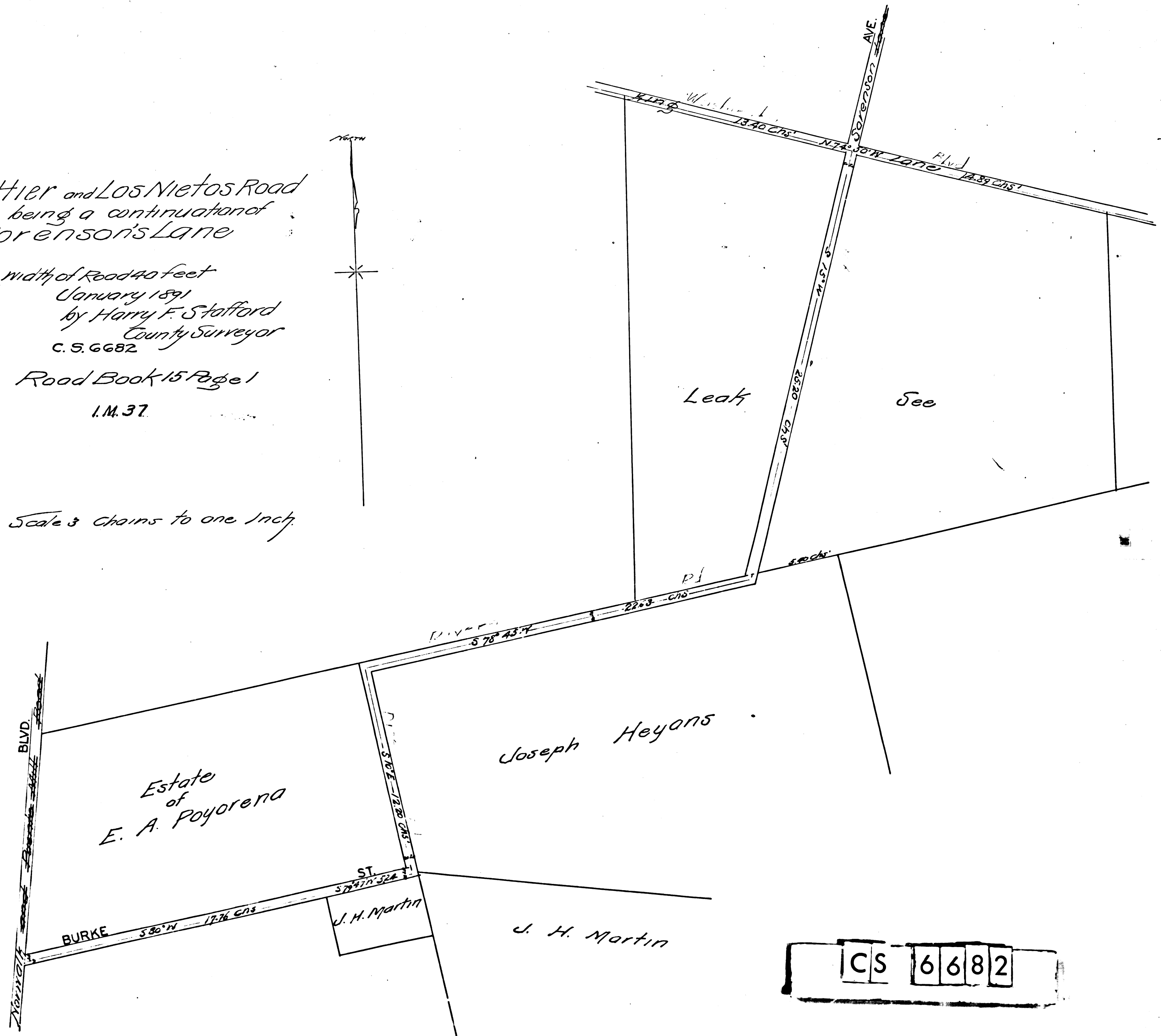


Whittier and Los Nietos Road
 being a continuation of
 Sorenson's Lane

width of Road 40 feet
 January 1891
 by Harry F. Stafford
 County Surveyor
 C. S. 6682

Road Book 15 Page 1
 I. M. 37

Scale 3 chains to one Inch



CS 6682

SEE ON PAM 2909582 2714003

SEE ON PAM 2909582 2714003