

RIO HONDO AVE
Savanah and Old Mission Road

For vacation portion Savanah and Old Mission Road See D:1-4 & D:12-40
 Savanah and Old Mission Road chg. to Rio Hondo Ave. D:49-1, R.B. 33-42

TIS RIIW

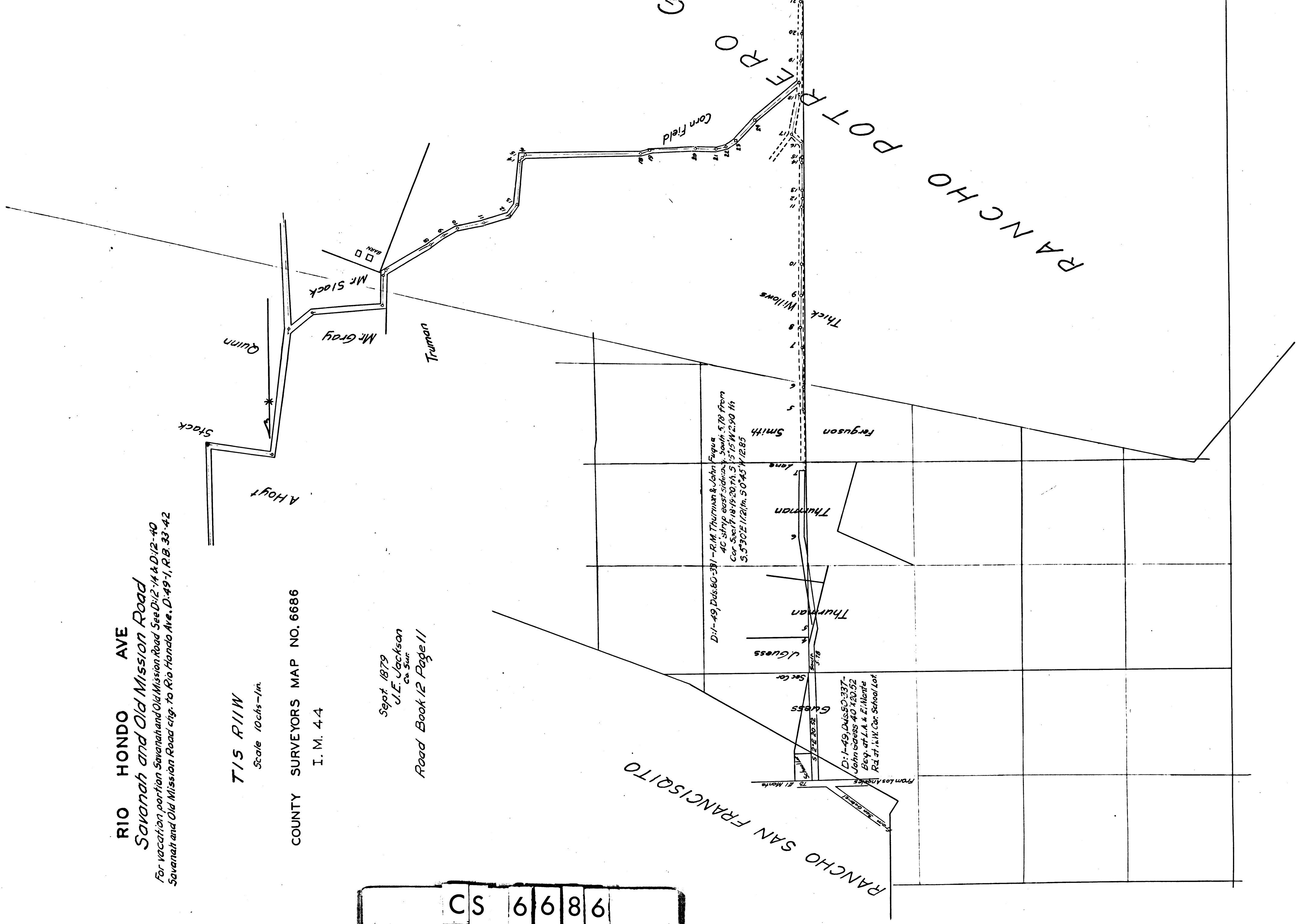
Scale 10chs=1in.

COUNTY SURVEYORS MAP NO. 6686

I. M. 44

Sept 1879
 J.E. Jackson
 Co. Sur.
 Road Book 12 Page 11

A1 OF A2
 CS 6686



CS 6686
A2 OF A2

