

33

32

T.I.N.R. & W.
T.I.S.R. & W.

BERNARDINO

TRAFTON

FRANK EVANS

5

POMONA COLLEGE
TOWN OF
PIEDMONT
POMONA COLLEGE

WILKINS AVE
PIEDMONT AVE

31 32 33

4

5

Baseline Road

35

Surveyed March 1891

*By Harry F. Stafford
County Surveyor*

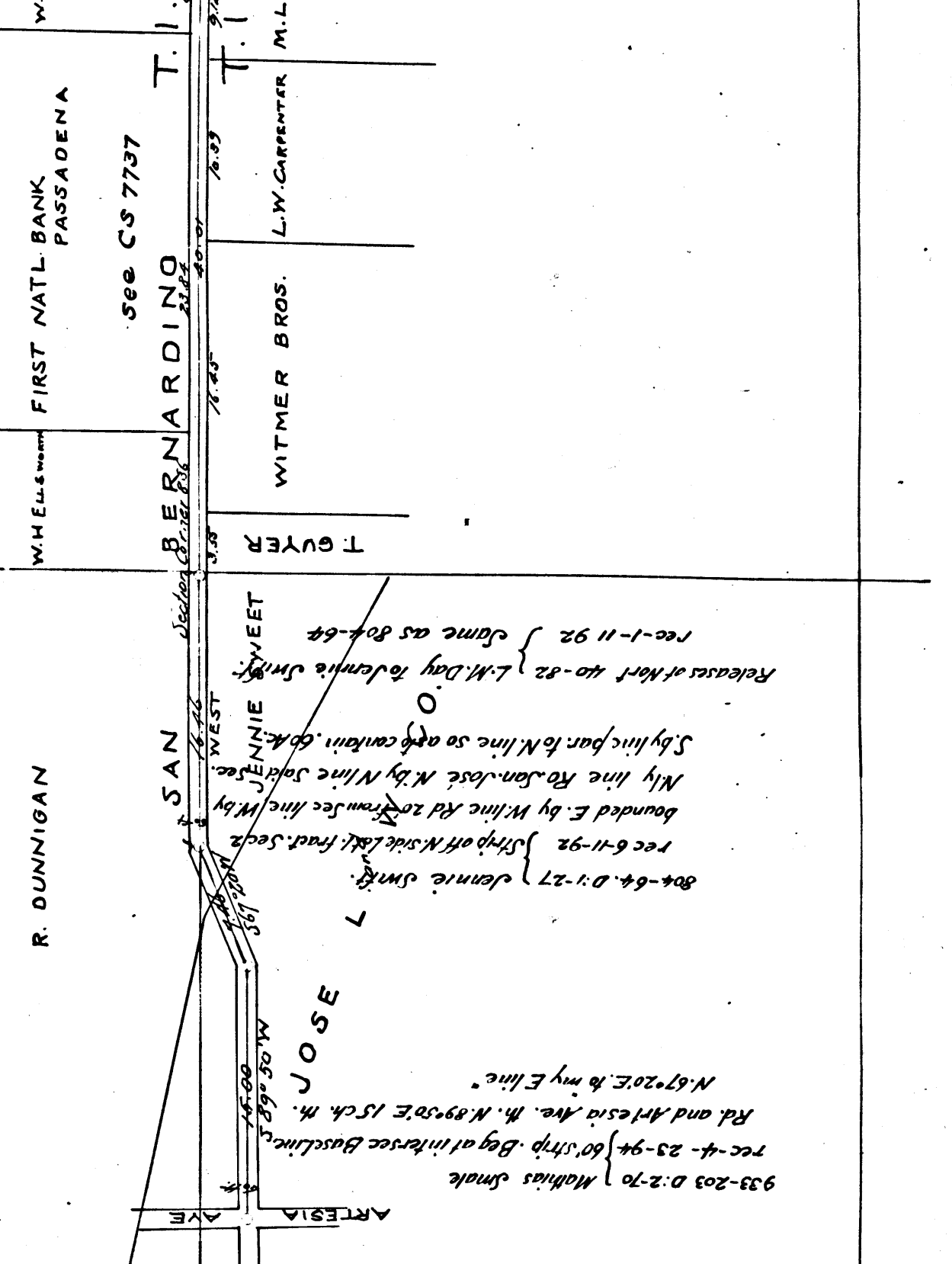
C.S. 6689
I.M. 50

Road Book 16 Page 6

Wesley Schams-Oresch

See R 4-232

Base Line Road name established - D-49-81



R. DUNNIGAN

FIRST NATL BANK
PASSADENA

see CS 7737

BERNARDINO

WITMER BROS.

L.W. CARPENTER M.L.

JOSE

ARTESIA

SAN

SAN

JOSE

ARTESIA

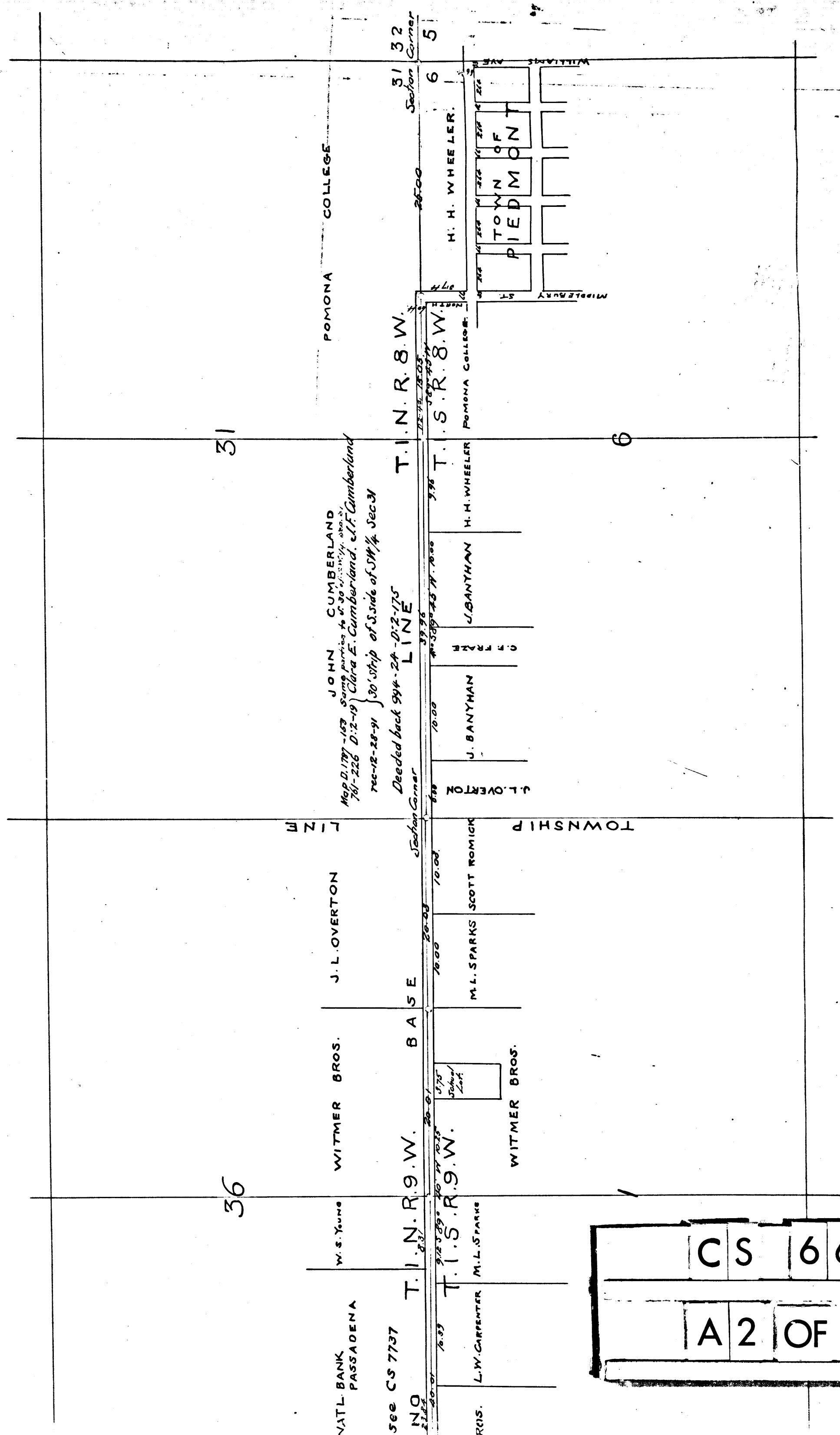
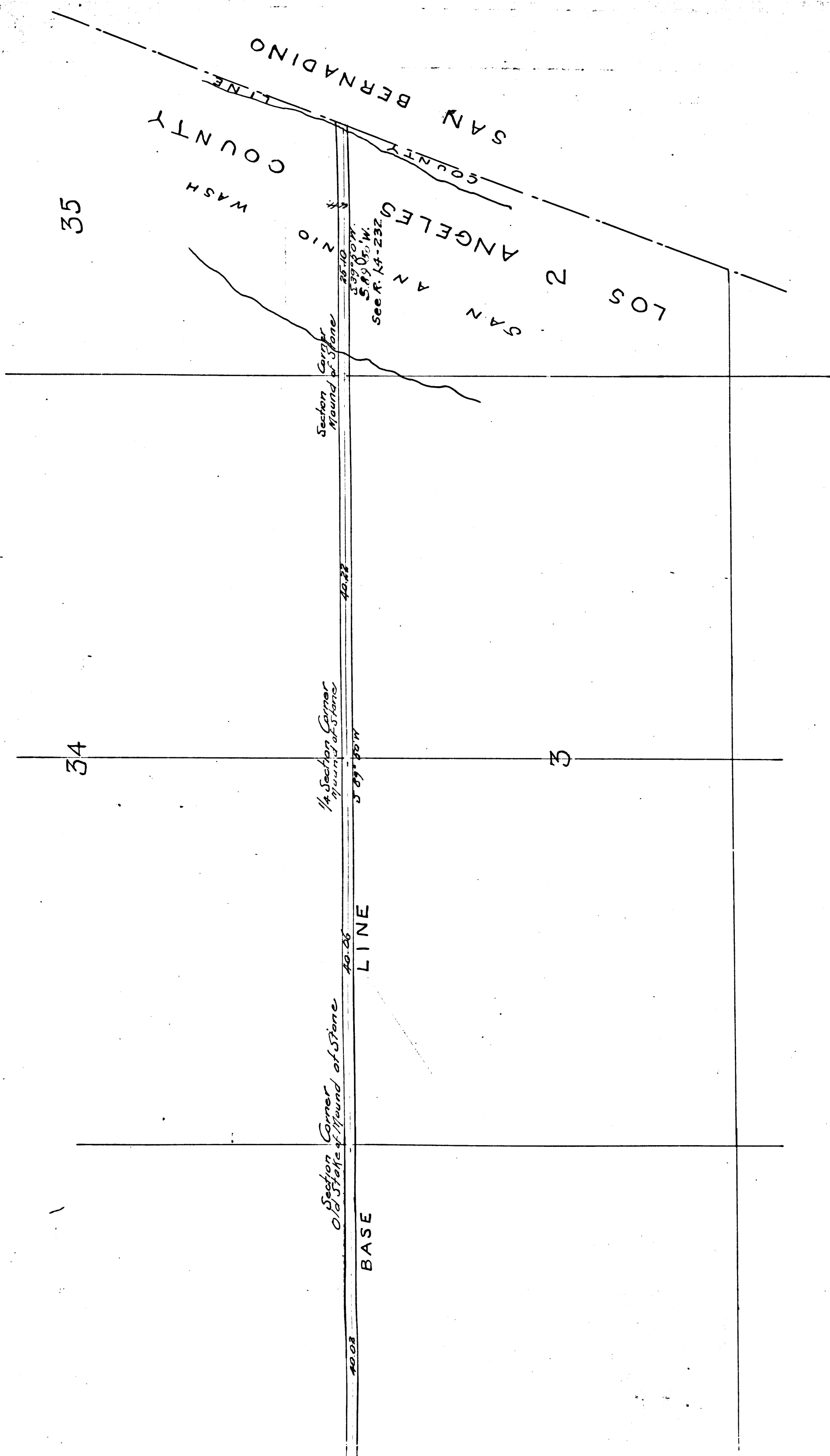
SAN

JOSE

933-203 D-2-70 Malhas Smale
rec-4-23-94 80' strip. By at intersect Baseline
Rd and Artesia Ave. N. N. 89° 50' E 15 ch. N.
N. 87° 20' E. 16 my E line
804-64 D-1-27 Jennie Smale
rec 6-11-92 Strip off N side L&L. Frat. Sec 2
bounded E. by W. line Rd to from Sec line W. by
My line Ro. San. Jose N. by N line San Jose
S. by line par to N line so are contain. G. K. E.
L. M. Day Tolentia Smale
rec-1-11-92 } same as 804-64

CS 6689

A1 OF A2



A 2	OF	A 2
CS	6689	