

*COUNTY ROAD*  
*in Anaheim Landing & Norwalk Road Districts*

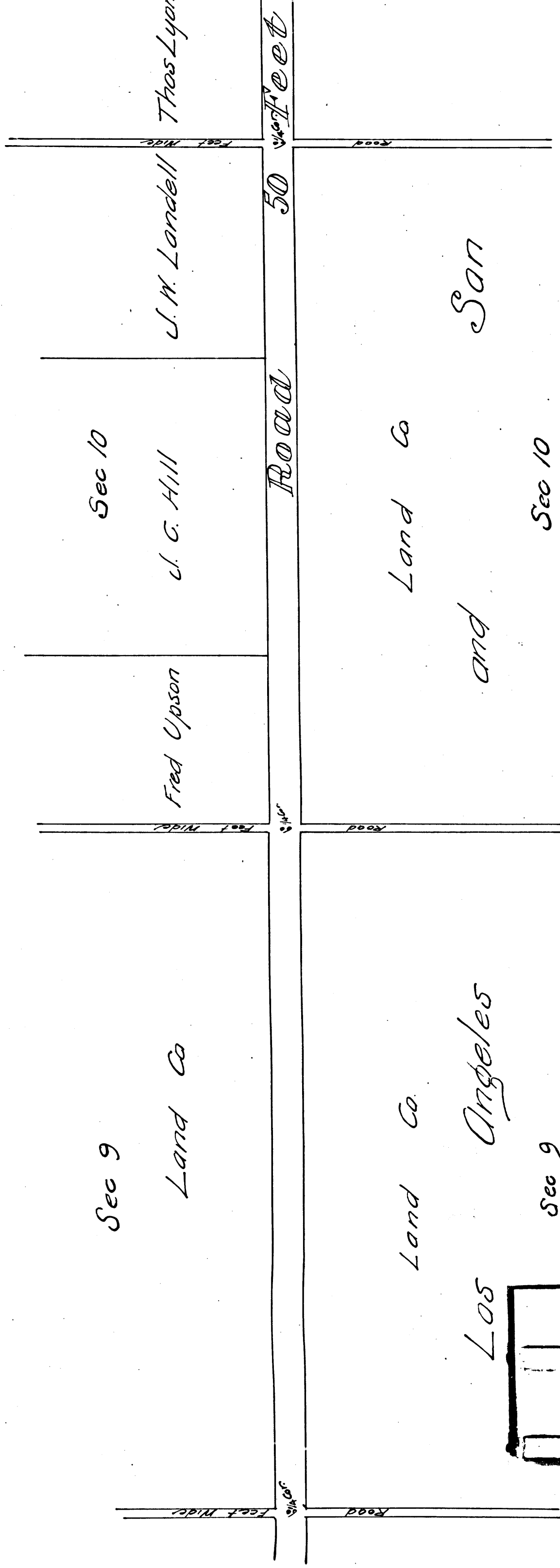
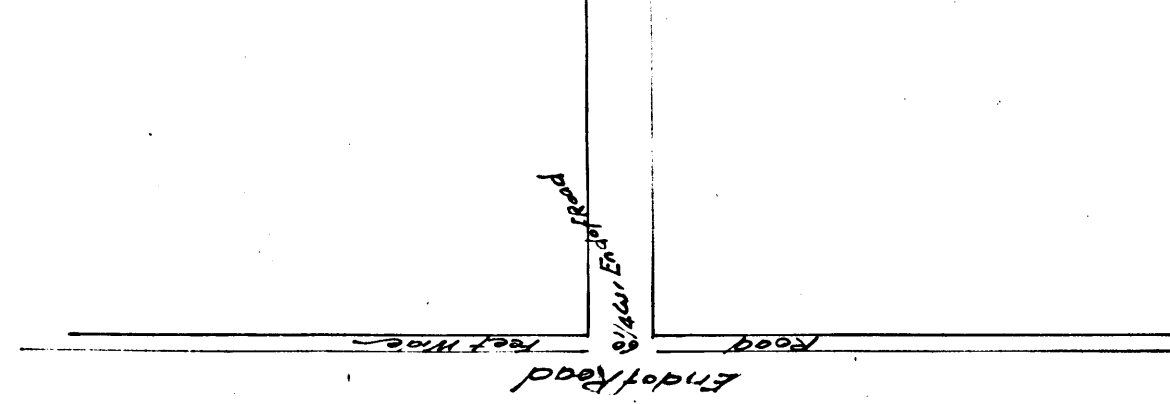
*See Co Sur. Map 7570*

*by E. T. Wright Co. Surveyor*  
*November 1881*

*Scale 10 chains = 1 inch*  
*Width of Road 50 feet.*

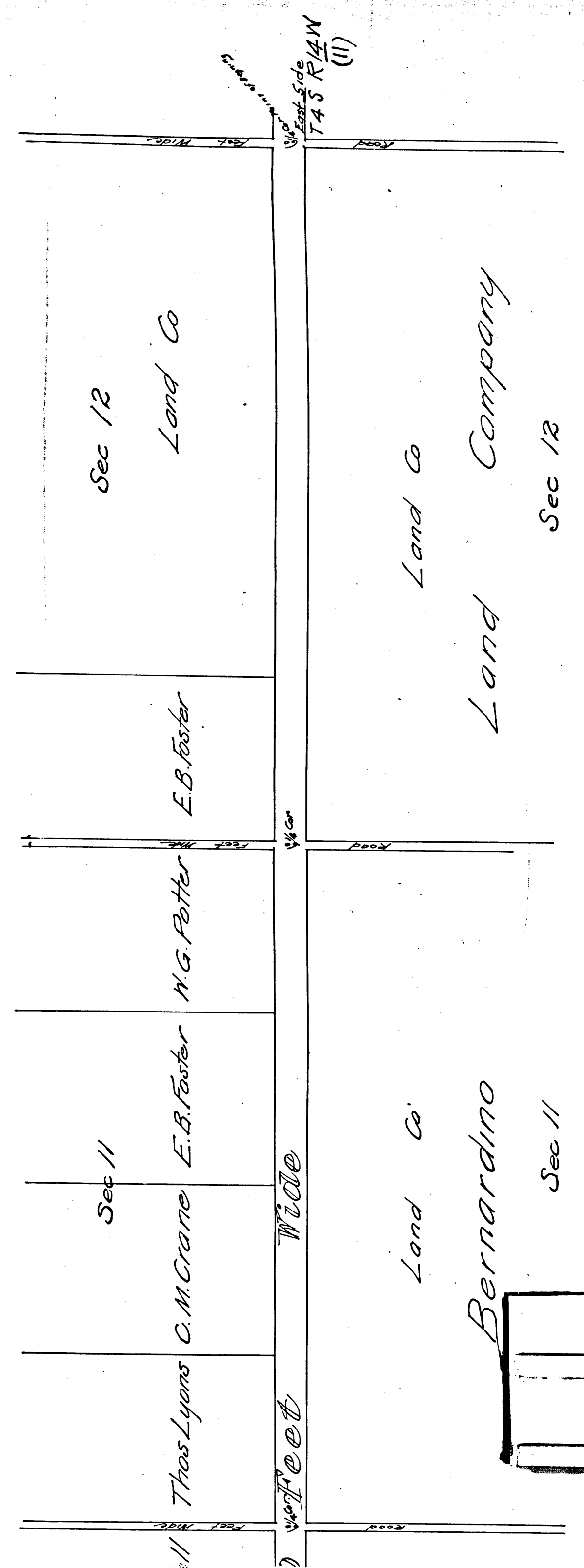
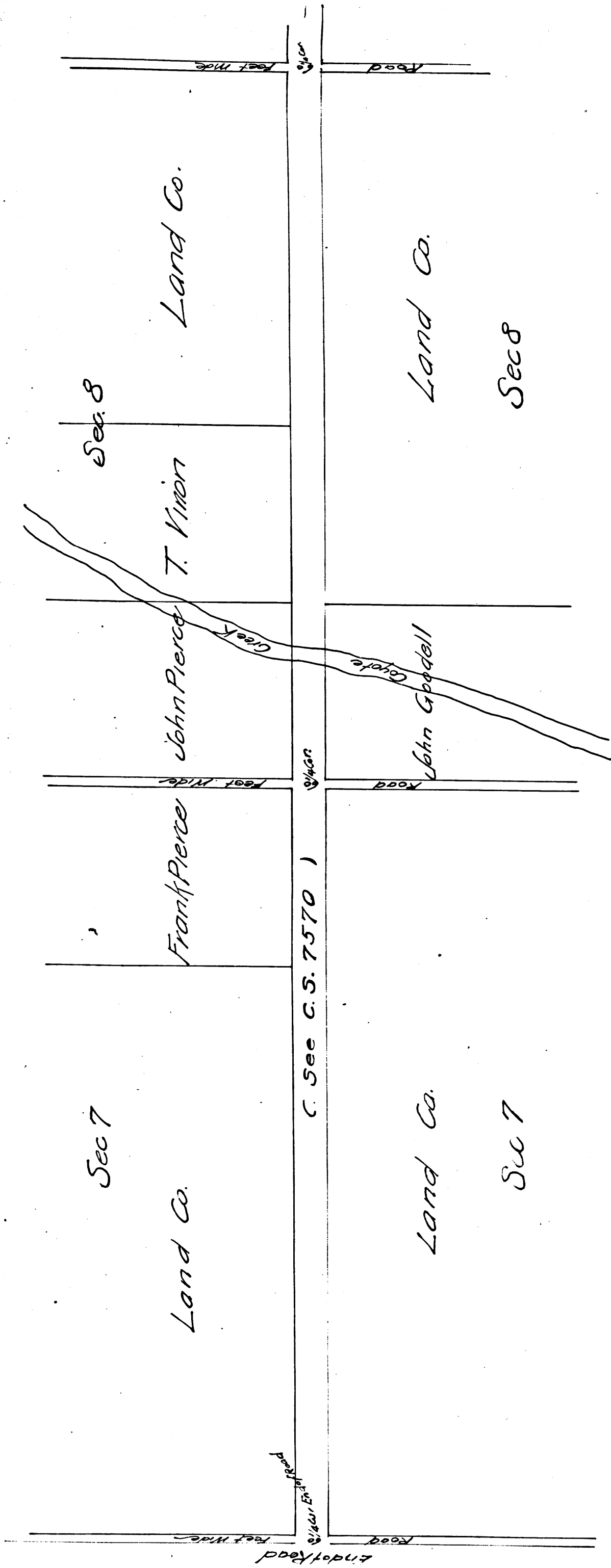
*Road Book 12 Page 15*

*C. S. 6690*  
*I. M. 31*



Los Angeles  
 Sec 9

C	S	6	6	9	0
A	1	O	F	A	2



C	S	6	6	9	0
A	2	OF	A	2	