

THE OLD
SAN BERNARDINO ROAD
I.M. 47

Scale 6 chs to one inch

See R. 3-108

MAY 1879

John E. Jackson
County Surveyor
Map
Road Book 18 Pages 188
C.S. 6692

R.B. 1-283, June 3/1879.
(D. 19-263)
Road declared a public highway by Hon. Board
of Supervisors, as shown on this Map.

Thick Brush

S 88 1/4 E 118.00 chs Mon N 79 E

Thick Brush

Sec 18

T I S R I O W

Sec 17

T. I. S. R. 11 W

Ranch Boundary N 75 E

LA PUENTE RANCH

T. I. S. R. 10 W

HARRINGTON

Sec 16

Sec 15

AGUAYA

MILLER

C.S. 7590
R. 4-58
S 87 1/2 E 57.00 chs Mon N 78 1/2 E

R. 5-48
Mon N 78 1/2 E

N 87 1/2 E 29.00 chs Mon N 78 1/2 E

SEE CO. SUR MAP 6726

S 75 1/2 E 39.00 chs Mon N 81 1/2 E

N 71 E 62.00 chs N 71 E 11 1/2 E

N 82 1/2 E 57.00 chs

PALMER

Stone Post

Palmer

Rehart

Congdon

Granghall Post

W. ROWLAND

Post

Post

Post

Post

Post

Post

Post

Post

Post

Post

Post

Post

Post

Post

Post

Post

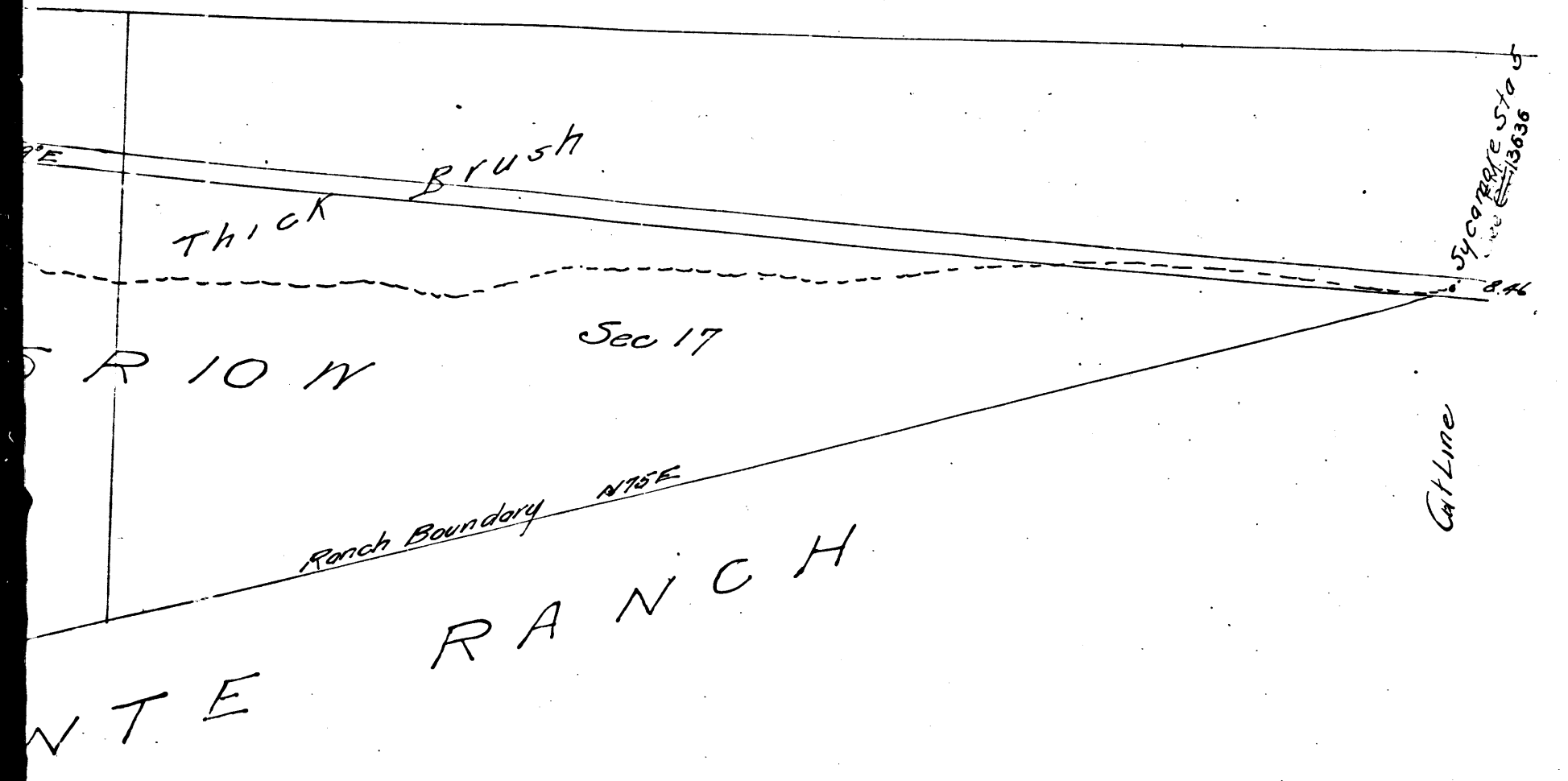
Post

Post

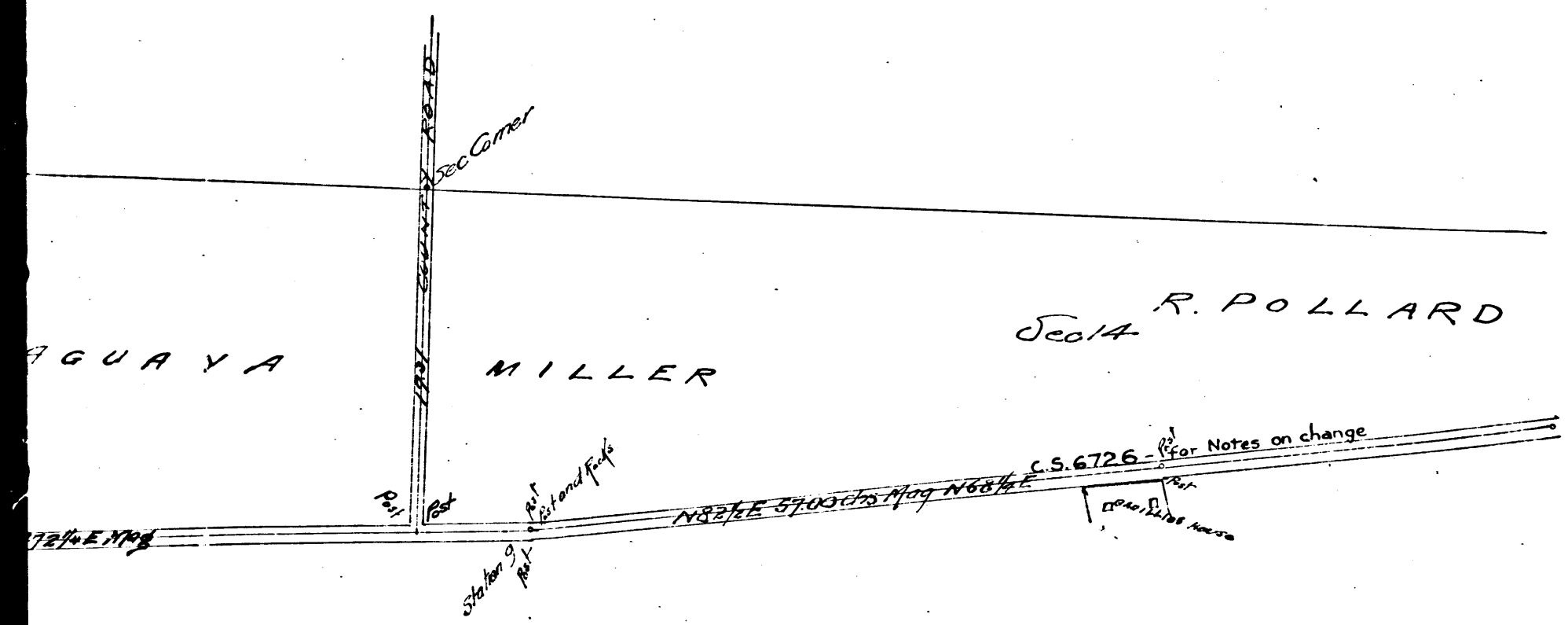
CS 6692
A1 OF A3

B A D I L L I O B

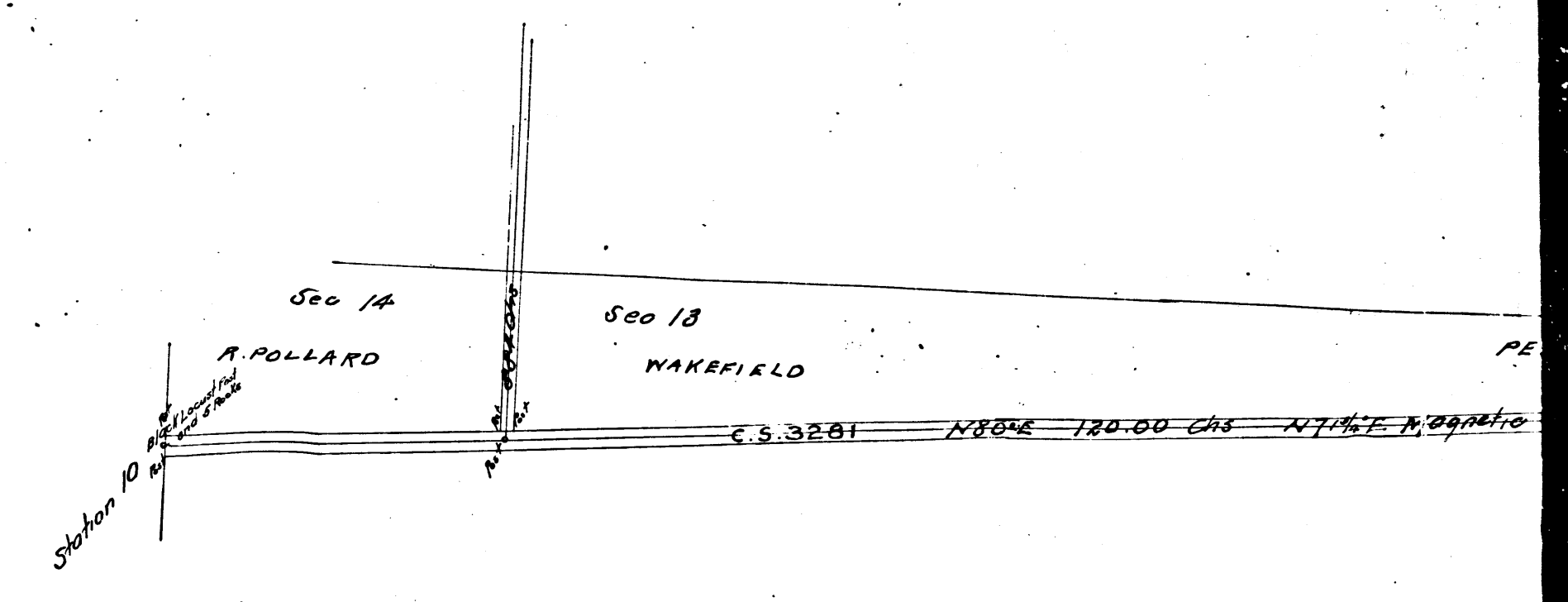
LA PUENTE RANCH



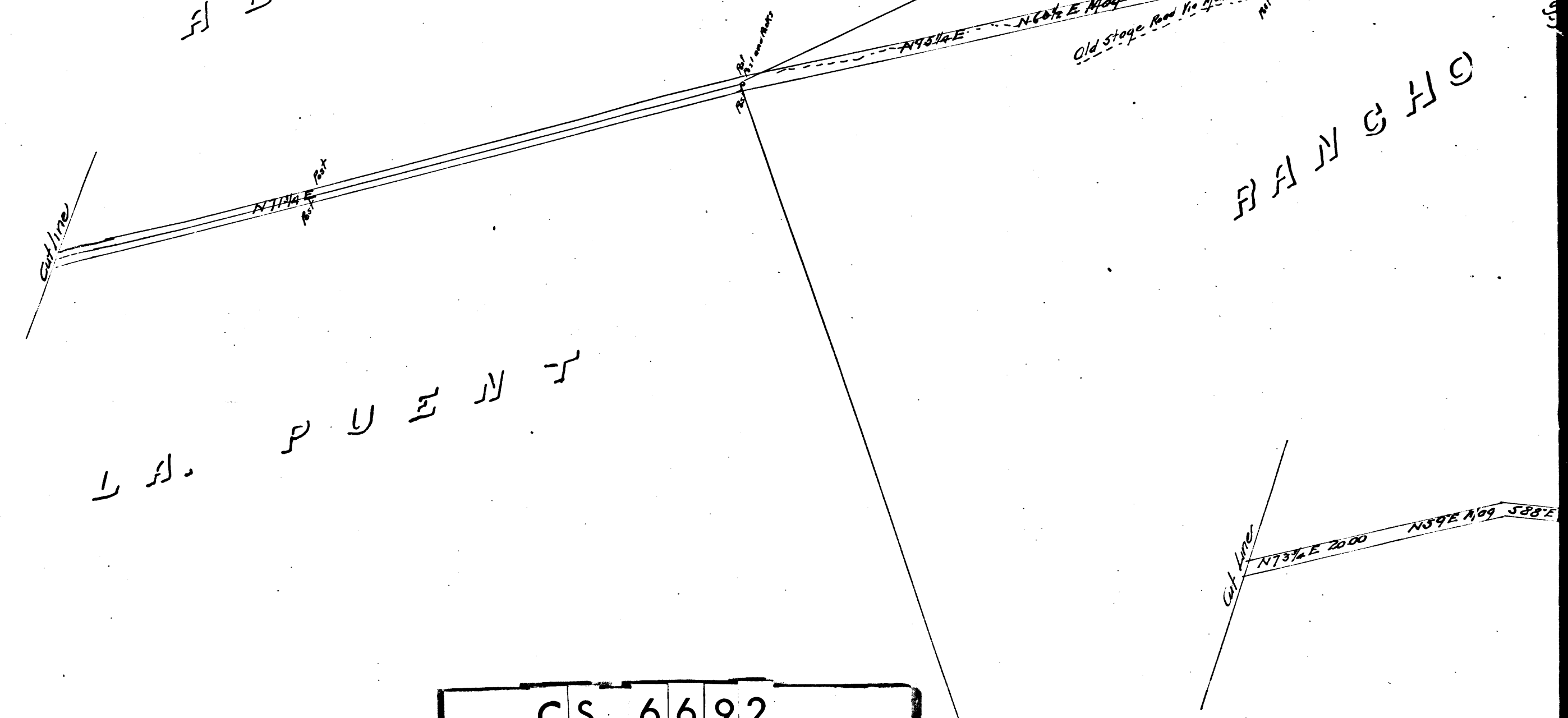
W T E R A N C H



D I L L I O B R O T H E R S
 R A N C H O

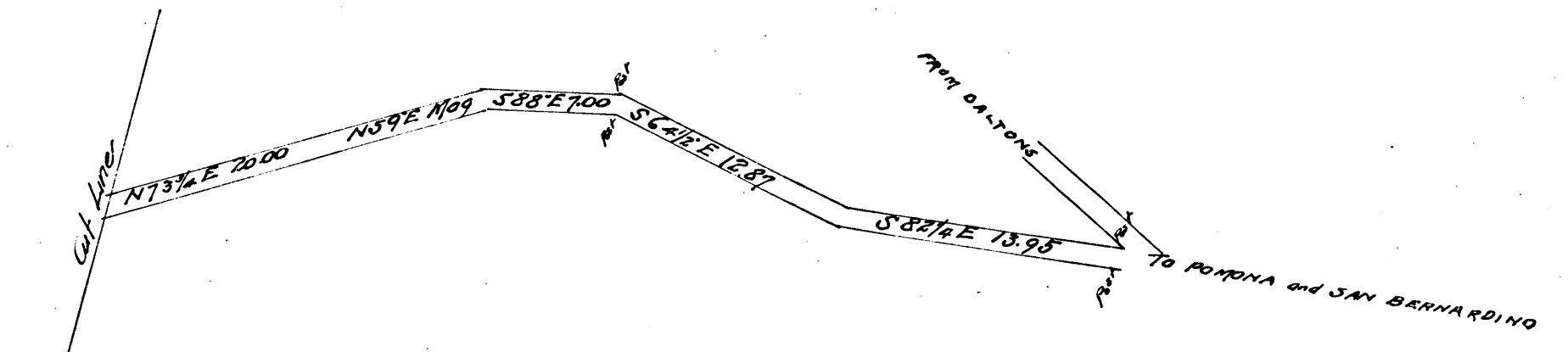
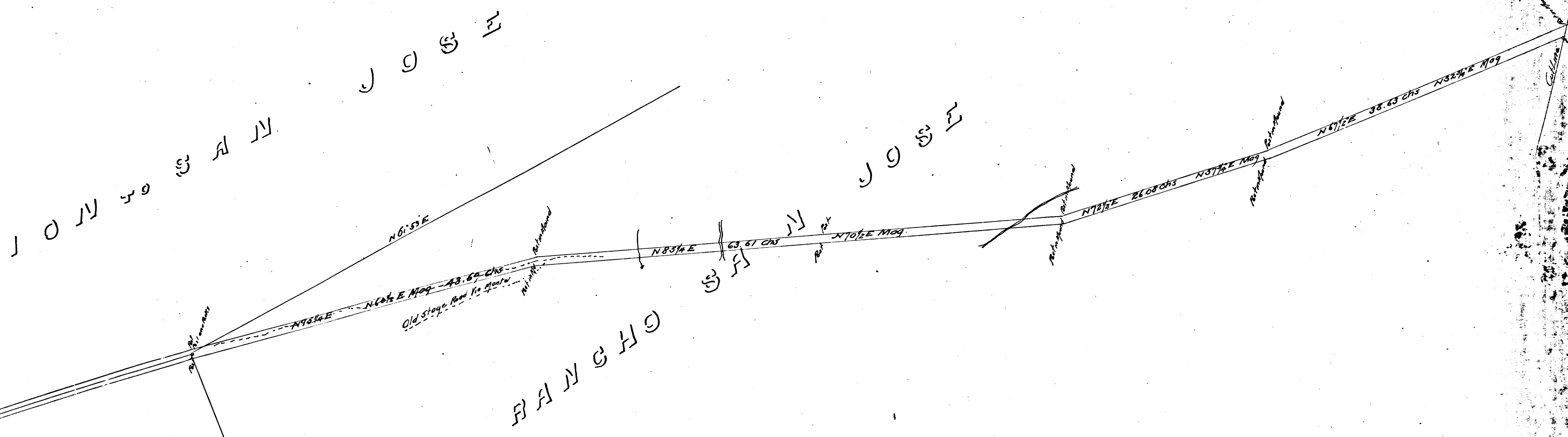
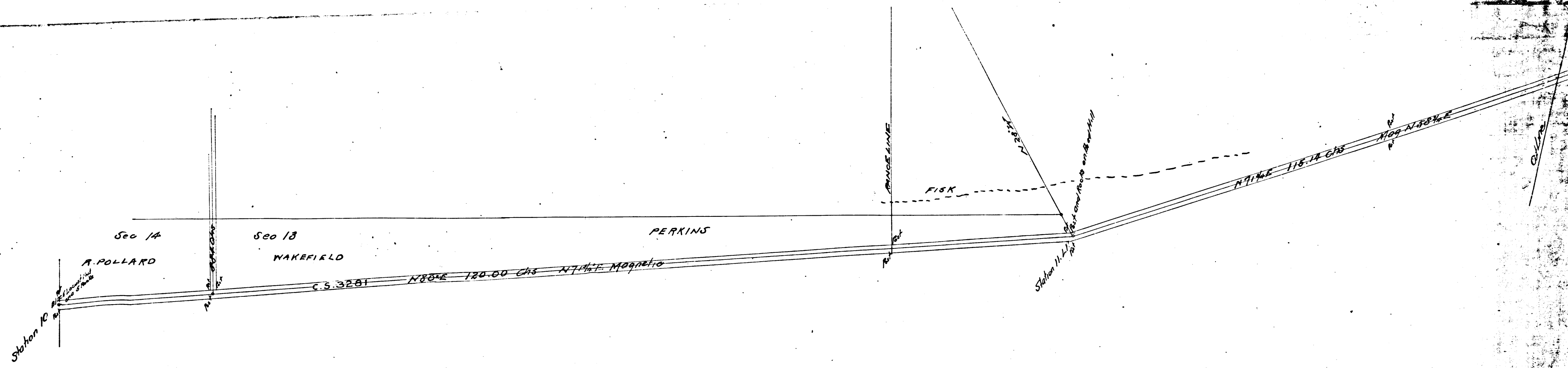


A D D I T I O N T O S A N J O S E
 R A N C H O



L A P U E N T

CS	6	6	9	2
A	2	OF	A	3



CS	6692
A3	OF A3